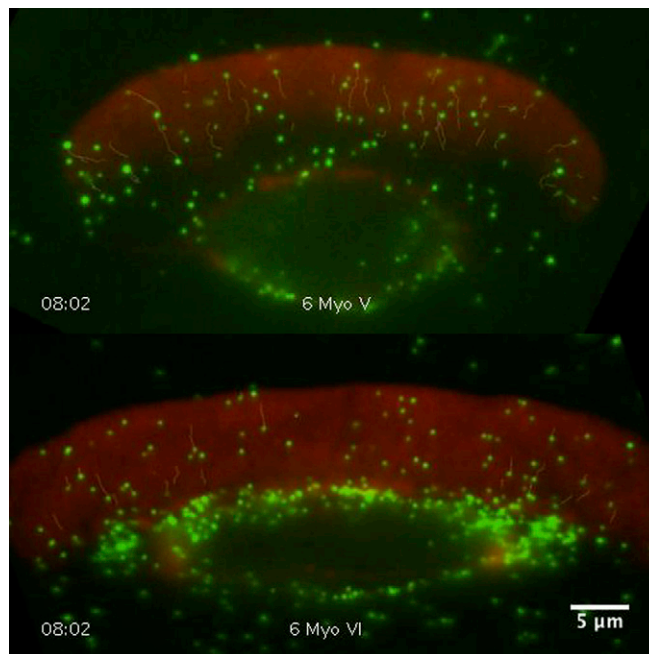


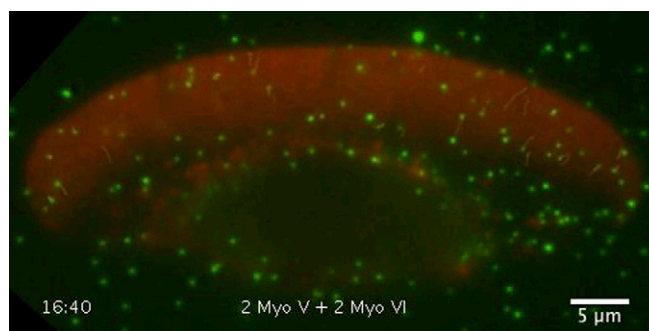
Supporting Information

Hariadi et al. 10.1073/pnas.1315923111



Movie S1. (Upper) Movie of scaffolds with 6 myosin V (green) meandering on a keratocyte actin network (red) (Fig. 3C). (Lower) Scaffolds with 6 myosin VI (green) moving linearly on the 2D network (Fig. 3D). Data were acquired at a 2-Hz frame rate, 2 mM ATP, and at room temperature.

[Movie S1](#)



Movie S2. Scaffolds with 2 myosin V and 2 myosin VI meandering on a keratocyte actin network (red) (Fig. 6A). Scaffolds travel unidirectionally, either toward the cell periphery or the cell center. Data collected at a 2-Hz frame rate, 2 mM ATP, and at room temperature.

[Movie S2](#)