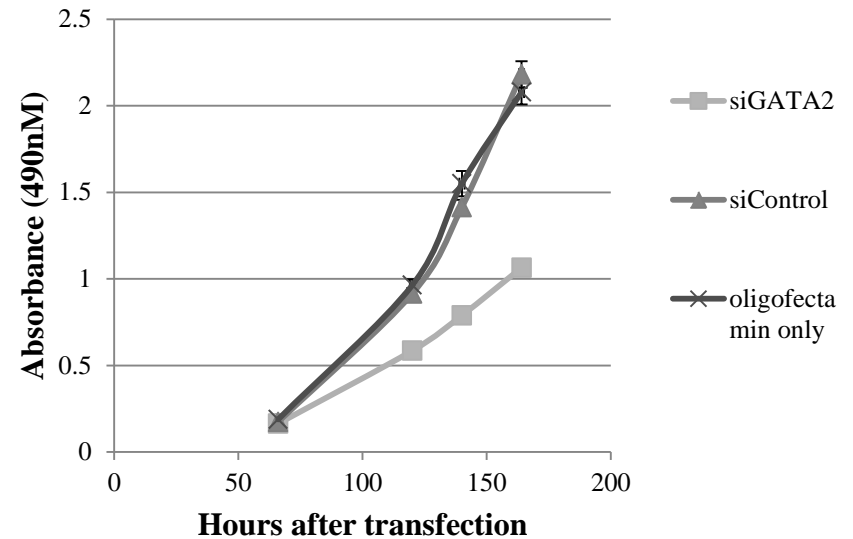
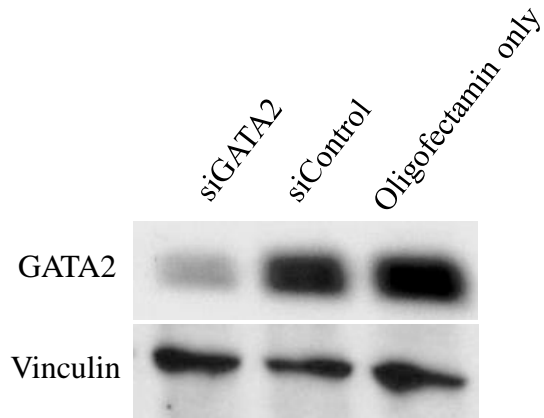
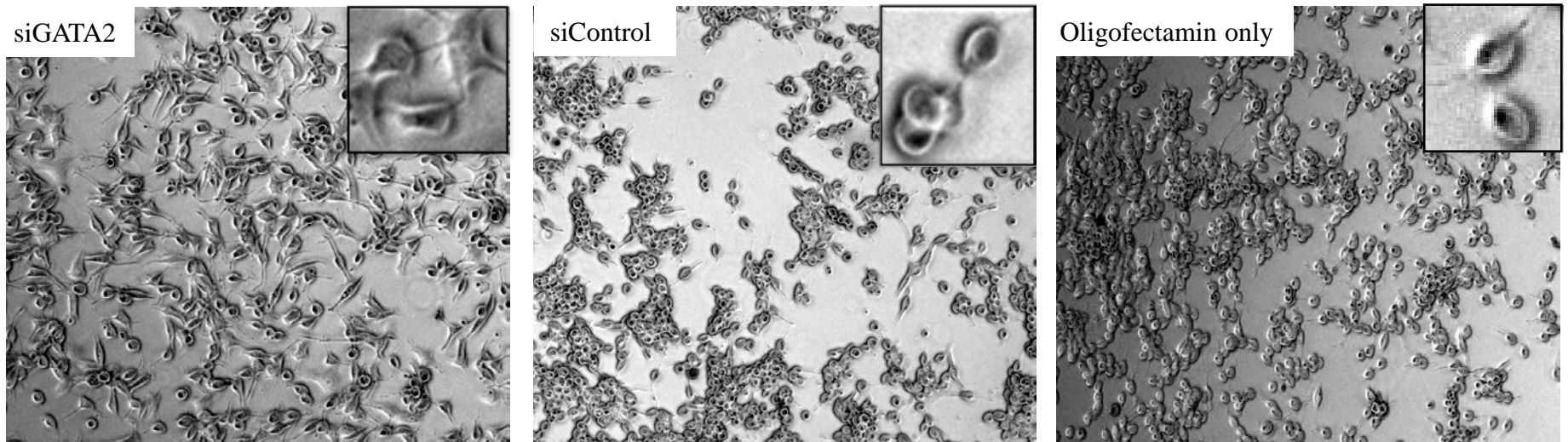


## Supplementary Fig. 1A



## Supplementary Fig. 1B



Supplementary Figure 1: A) *GATA2* silencing markedly reduced proliferation of C4-2 prostate cancer cells. B) *GATA2* silencing induced morphological changes in C4-2 prostate cancer cells. The normally rounded C4-2 cells became flat and spindle-like.