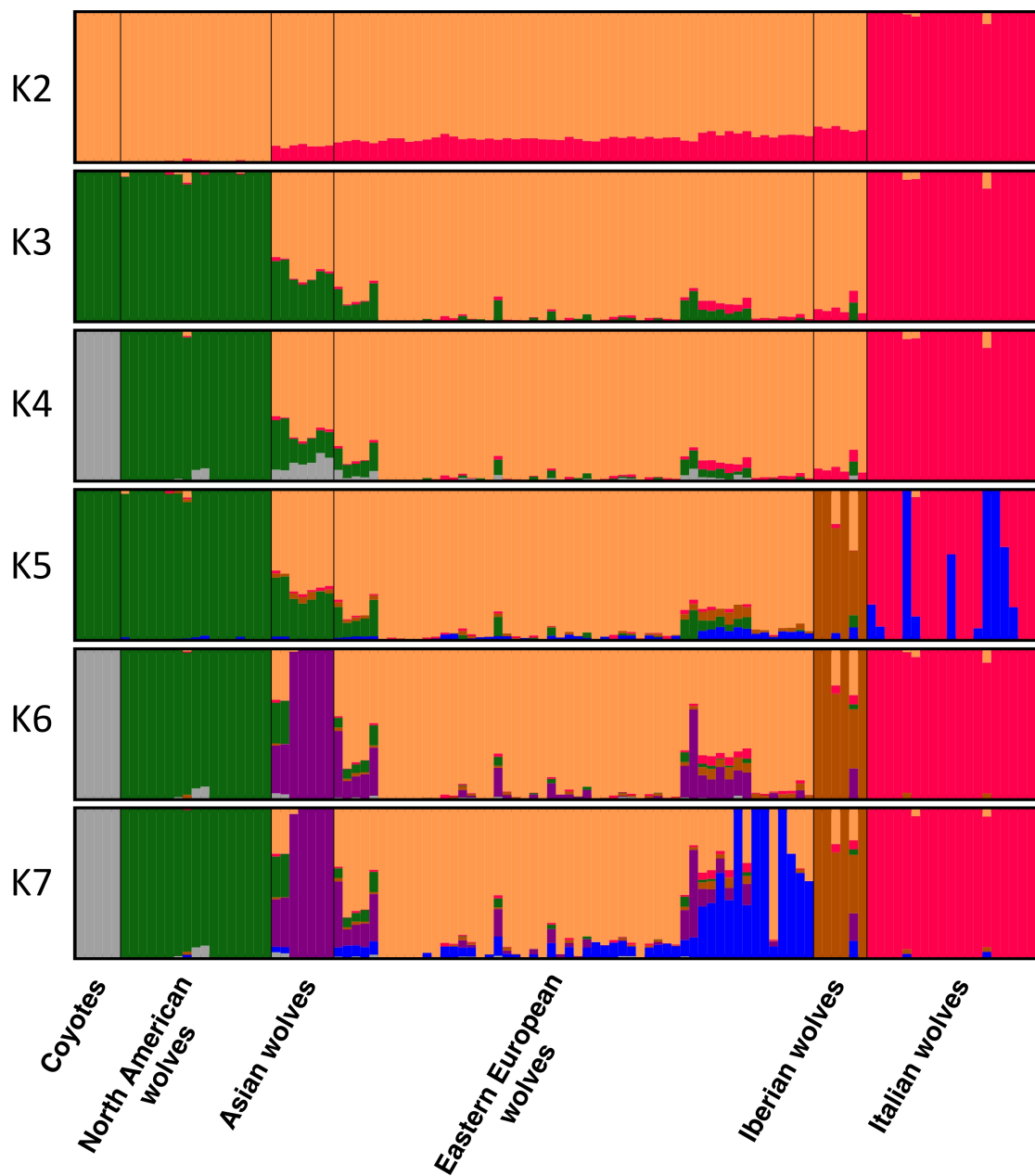


Supplementary Figure S1. Results of (A) ADMIXTURE and (B) STRUCTURE clustering analysis of European wolf populations in comparison with other wolf populations and the coyotes for K values between 2 and 7. The analysis was performed for the LD-pruned 34K SNP set. Within Eastern Europe, the samples are sorted according to their geographical locations, from the Kirov Region in Russia on the left to the Balkans and Carpathians on the right.

A



B

