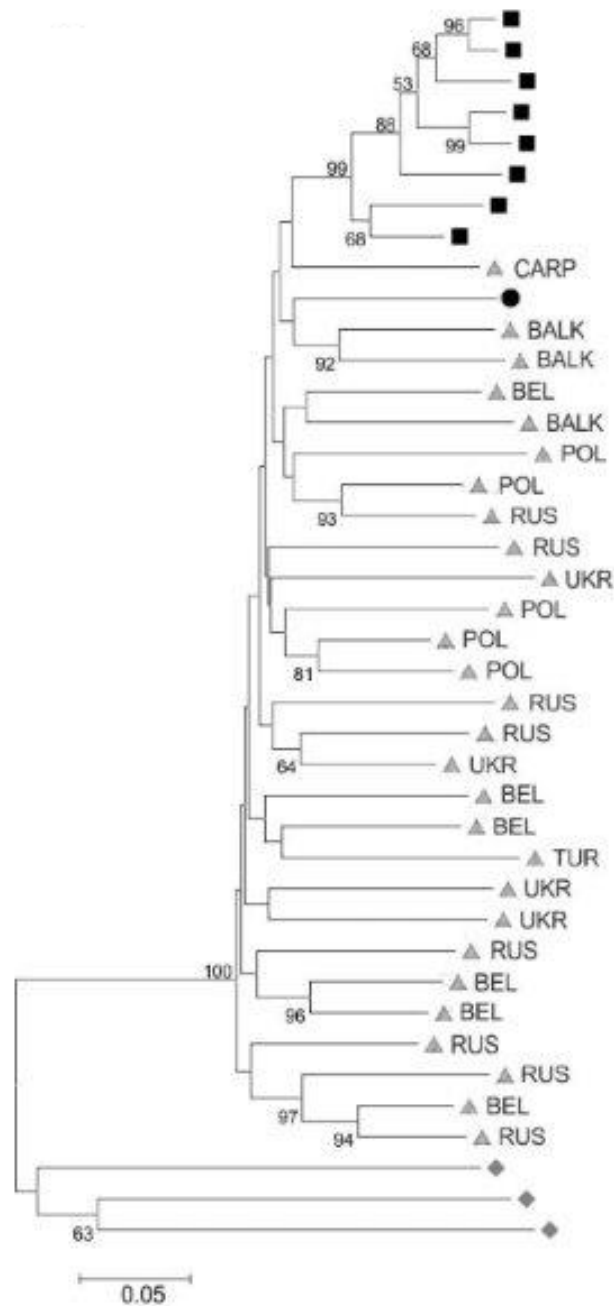


**Supplementary Figure S5.** Evolutionary relationships among X chromosome haplotypes of males inferred using the neighbour-joining method. The distances were computed using the p-distance measure. Bootstrap support is shown if higher than 50% of 1000 replicates.



**Legend**

- Iberian wolves
- Italian wolves
- ▲ Eastern European wolves
- ◆ Domestic dogs
- Two haplotypes from one female clustered together