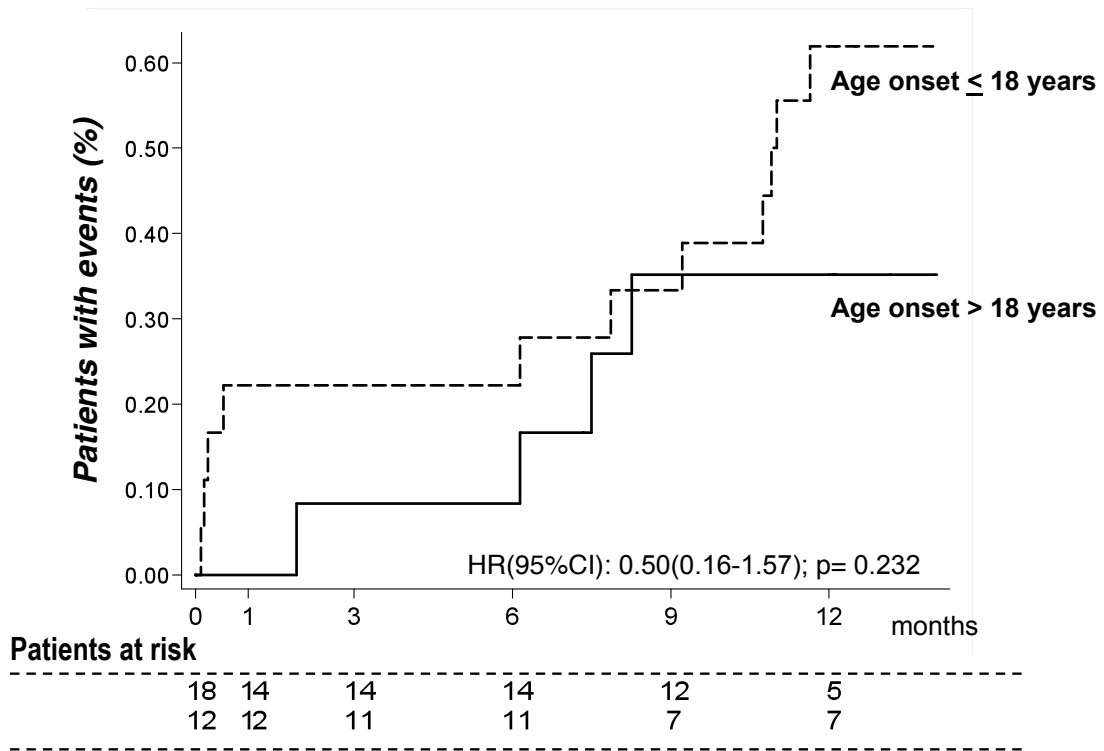


Supplementary Table 1, web appendix. Univariable and multivariable Cox analysis

	Relapse (n=15)		
	Hazard ratio	(95% CI)	p-value
univariate			
Male gender	0.629	(0.223-1.772)	0.380
Age (y) *	4.532	(1.234-16.247)	0.020
Adults age (>18y vs <=18y)	0.480	(0.173-1.329)	0.158
Age at onset of nephropathy*	1.029	(1.007-1.052)	0.010
Adults age at onset nephropathy (>18y vs <=18y)	0.497	(0.158-1.565)	0.232
Median duration of relapses pre (years)*	0.206	(0.010-4.229)	0.306
Number of relapse pre rituximab*	0.003	(0.00001-0.942)	0.048
Number of relapse pre rituximab (2 vs 1-2)	0.279	(0.088-0.878)	0.029
Systolic blood pressure (mmHg)	0.980	(0.938-1.024)	0.980
Diastolic blood pressure (mmHg)	0.972	(0.923-1.024)	0.291
MCD/MesGN vs FSGS	1.555	(0.436-5.539)	0.496
Serum creatinine (mg/dl)*	2.816	(0.768-10.321)	0.118
Serum albumin (g/dl)*	0.996	(0.976-1.017)	0.735
Total Cholesterol (mg/dl)*	0.979	(0.934-1.026)	0.383
Tryglicerides (mg/dl)*	0.823	(0.010-4.229)	0.122
Number of immunosuppressive drugs (>1 vs 1)	1.736	(0.617-4.88)	0.296
multivariate			
Age at onset of nephropathy*	1.025	(1.002-1.048)	0.035
Number of relapse pre rituximab (>2 vs 1-2)	0.330	(0.102-1.065)	0.064
Age at onset of nephropathy*	1.025	(1.001-1.049)	0.037
Number of relapse pre rituximab*	0.004	(0.00001-1.455)	0.066

* The powers chosen to model non linear continuous or ordinal baseline predictors by using first order fractional polynomial are -2 for age, -2 for age at onset nephropathy, 3 for median duration of relapses pre, -2 for number of relapse pre rituximab, 3 for serum creatinine, 3 for serum albumin, 3 for total cholesterol, 3 for triglycerides.



Extra Figure 1