

Supplementary appendix

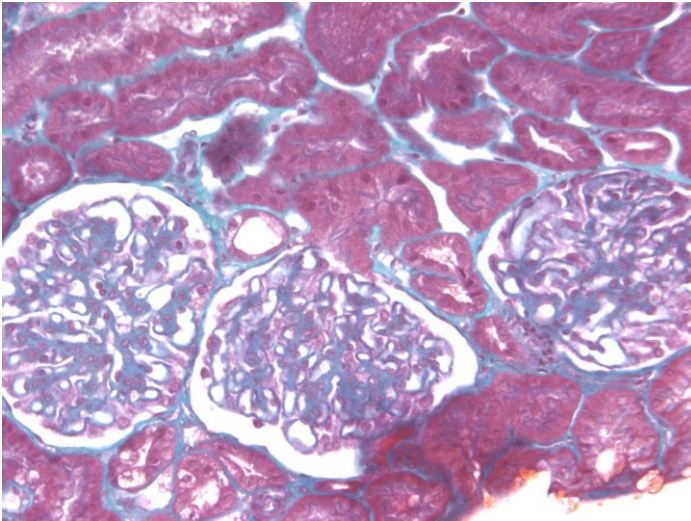
Table 1. List of drugs received by the patient during orthopedic surgery at onset of nephropathy

SEVORANE (sevoflurane) volatile anesthetic
SUFENTA (sufentanil) opioid analgesic drug
DIPRIVAN (propofol) hypnotic agent
PERFALGAN (paracetamol) analgesic
CELOCURINE (curare) succinylcholine chloride neuromuscular blocking drug
TRACRIUM (atracuriumbesilate) non-depolarizing neuromuscular blocking drug
ZOPHREN (ondansetron) antagonist of serotonin
MORPHINE
Dextrose 5%

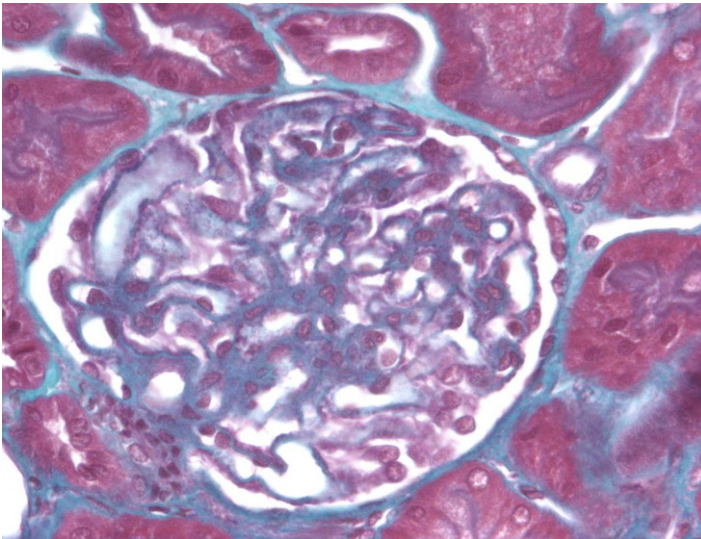
Table 2. Circulating immune complexes in patient's sera

	2008	2009
CIC-C1q EIA	Less than 4 μ g Eq/ml	Nearly equal to 4 μ g Eq/ml
	Both values considered negative for significant levels of CIC	
CIC-Raji EIA	Around 3 μ g Eq/ml	Around 10 μ g Eq/ml
	Both values considered negative for significant levels of CIC	

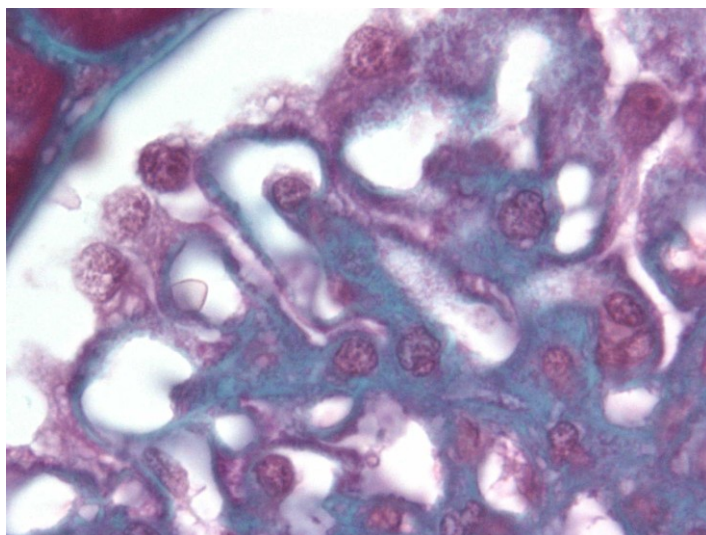
Figure 1



Masson's trichrome staining.



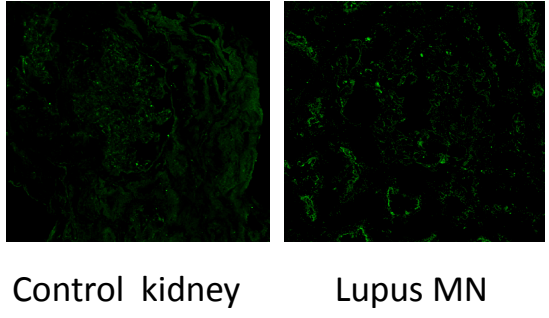
Glomerular basement membranes are thickened by diffuse epimembranous deposits.



The podocytes are swelled

Figure 2

rhASB in glomerular immune deposits



Rabbit anti-rhASB does not reveal granular staining along capillary loops in control kidney or in lupus MN

Figure 3



In Panels A and B, glomerular extracts were used as source of antigens in Western blot analysis and incubated with the serum of our patient (A) or with the serum of patient receiving another (idursulfatase) enzymotherapy (B)