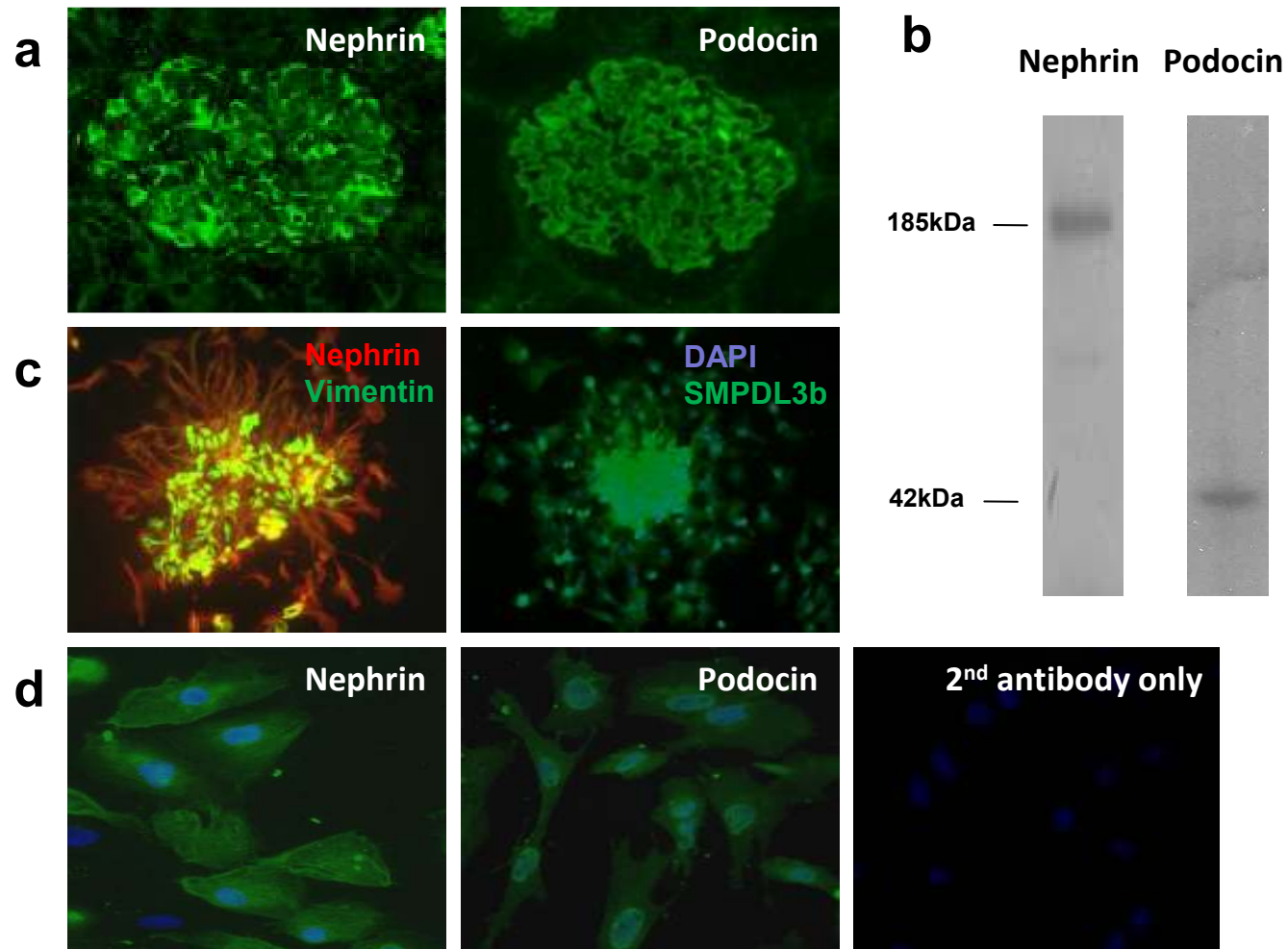
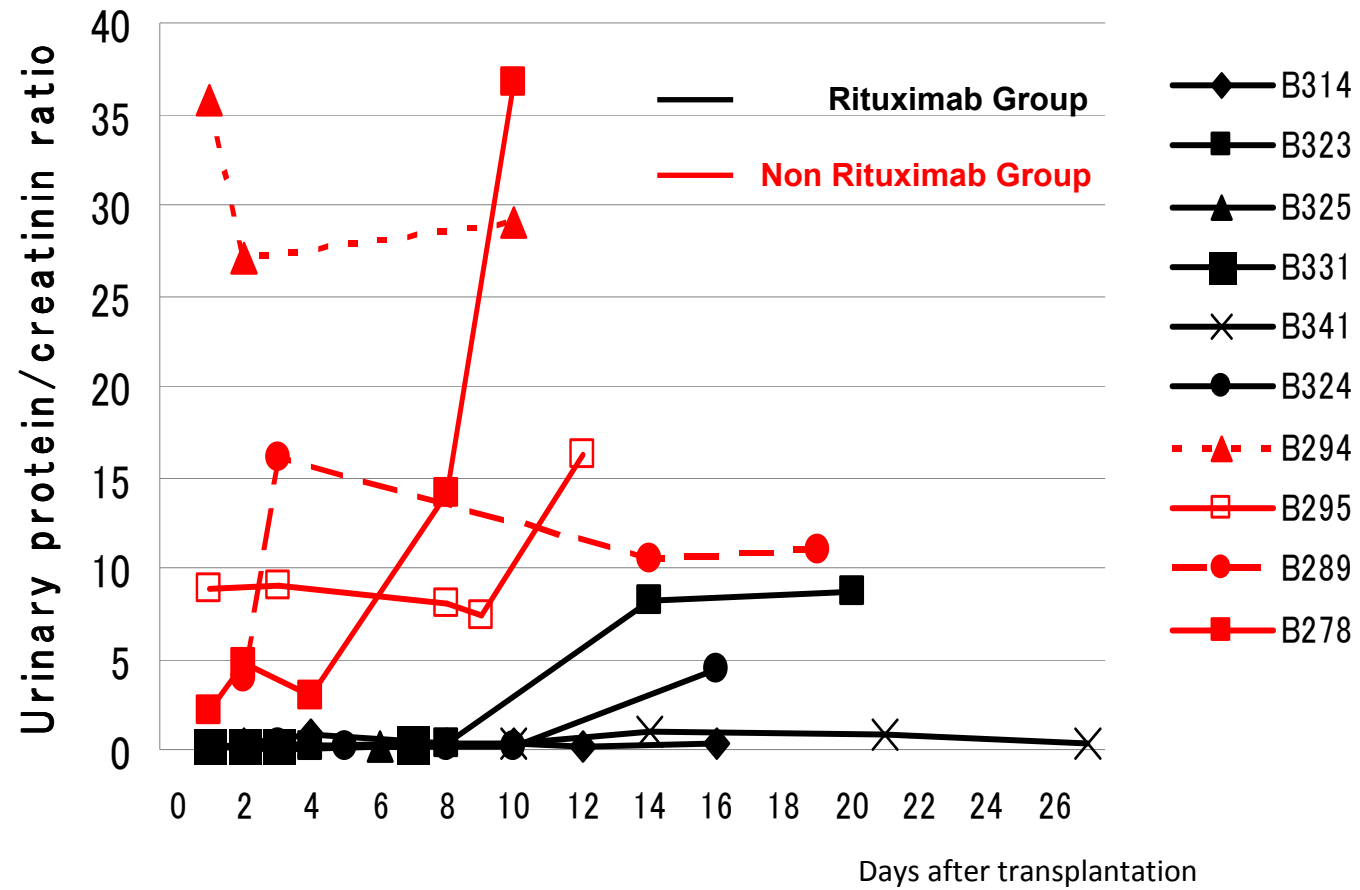


Suppl 1



Suppl 1. a) Anti-nephtrin and podocin antibodies stained pig glomeruli in an epithelial pattern. b) Western blot probed with anti-nephtrin and podocin antibodies with proteins of the expected molecular weights of 185 kDa and 42 kDa, respectively. c) Nephtrin (red) and vimentin (green) (left) and SMPDL-3b (green) and DAPI (blue) staining of pig podocytes (right). d) Anti-nephtrin (left) and podocin (middle) staining of the cultured pig podocytes. The right panel shows the background of the secondary antibody.

Suppl 2



Suppl 2. Urine protein / creatinine ratio in animals with (black lines) and without (red lines) Rituximab treatment in the peri-transplant period.