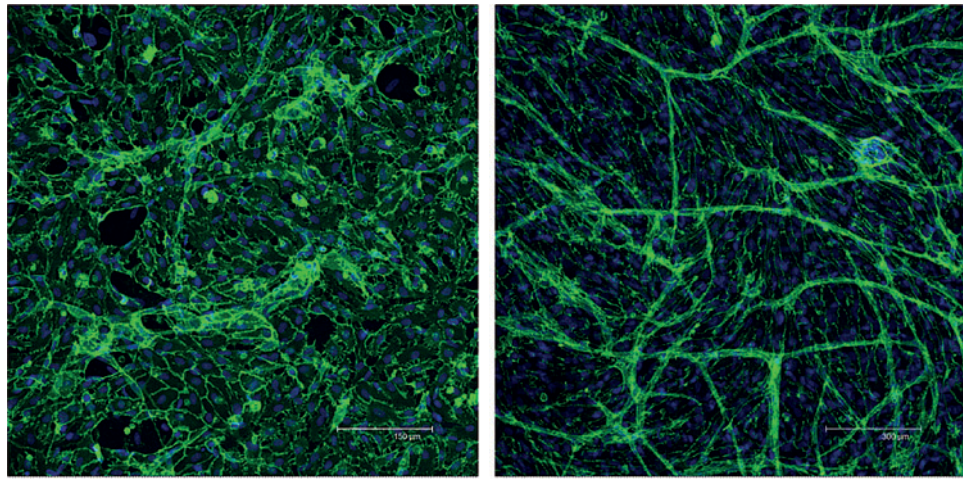


Supplementary Data



Ctrl

HSM

SUPPLEMENTARY FIG. S1. Effect of conditioned medium from mild heat stress (MHS)-treated cells on the formation of capillary-like structures in a co-culture system. Non-HS-treated co-cultures cells were cultured with the conditioned culture medium collected from cells exposed to MHS (HSM) twice a week. After 14 days, co-cultures treated with conditioned medium were stained immunohistochemically for the endothelial marker CD31; the formation of capillary-like structures was detected by using a Leica confocal laser scanning microscope.