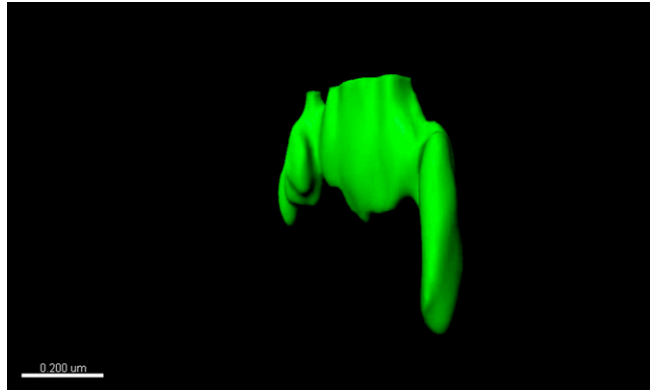


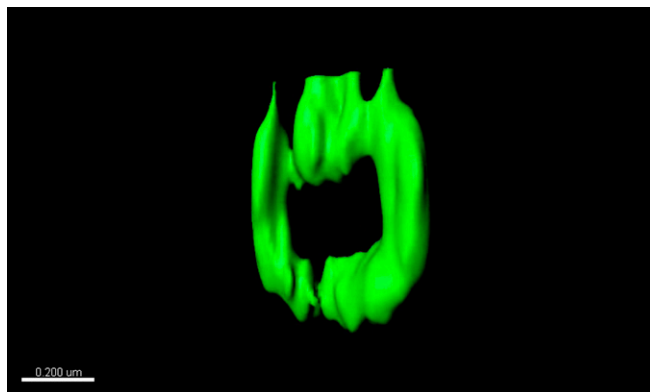
Supporting Information

Holden et al. 10.1073/pnas.1313368111



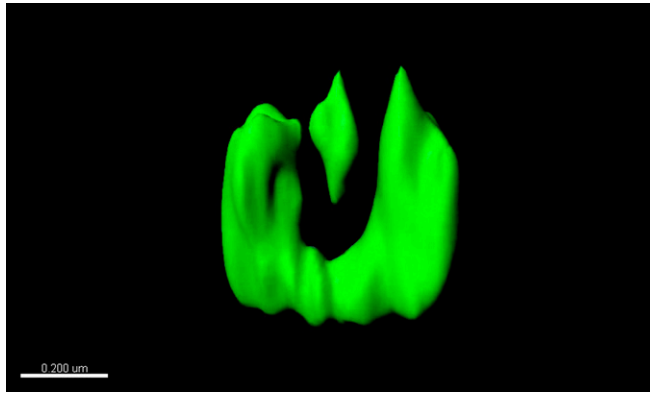
Movie S1. 3D volume and isosurface rendering of a patchy early predivisional Z-ring. Video shows same cell as Fig. 3 A, *iv*.

[Movie S1](#)



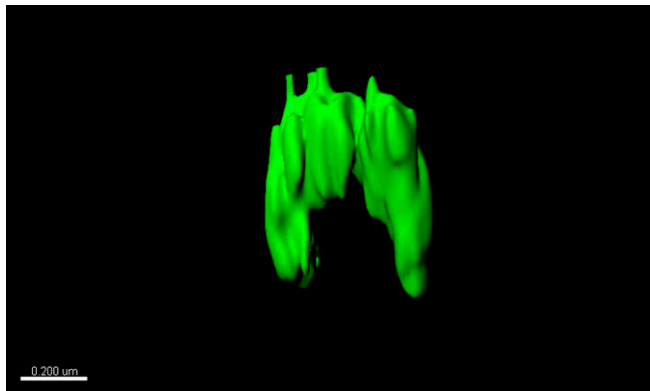
Movie S2. 3D volume and isosurface rendering of a complete early predivisional Z-ring. Video shows same cell as Fig. 3 A, *v*.

[Movie S2](#)



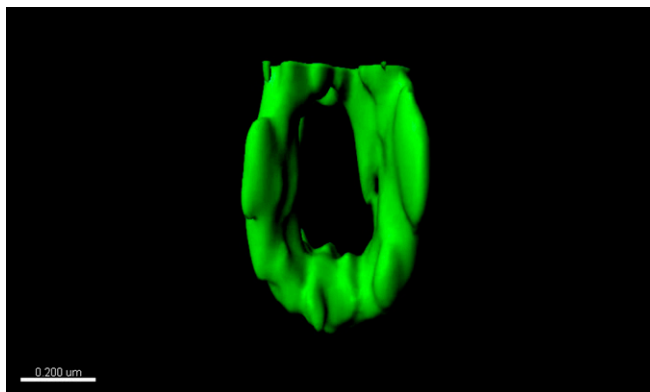
Movie S3. 3D volume and isosurface rendering of an incomplete mid/late predivisional Z-ring, #1. Video shows same cell as Fig. 3 B, *ii*.

[Movie S3](#)



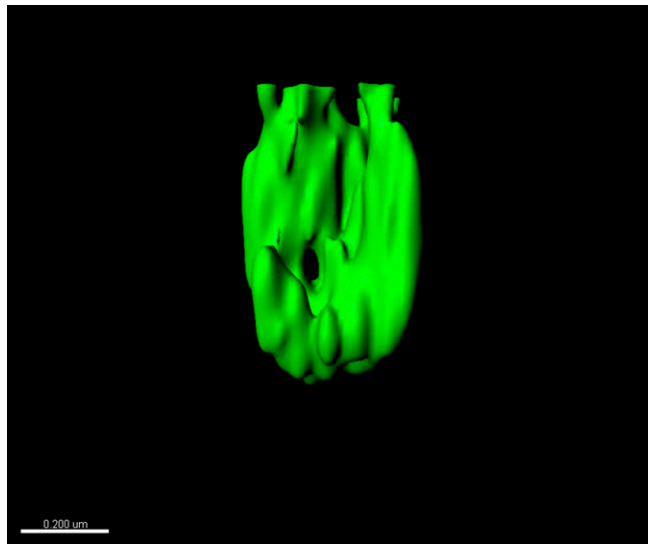
Movie S4. 3D volume and isosurface rendering of an incomplete mid/late predivisional Z-ring, #2. Video shows same cell as Fig. 3 B, *iv*.

[Movie S4](#)



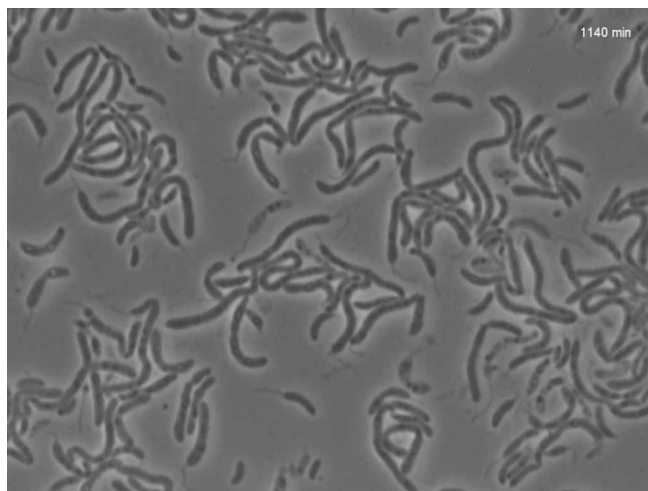
Movie S5. 3D volume and isosurface rendering of a Z-ring for an SOS-induced cell, #1. Video shows same cell as Fig. S12A.

[Movie S5](#)



Movie S6. 3D volume and isosurface rendering of a Z-ring for an SOS-induced cell, #2. Video shows same cell as Fig. S12B.

[Movie S6](#)



Movie S7. Timelapse phase contrast imaging of cells in the presence of 0.8 μg/mL mitomycin C.

[Movie S7](#)

Other Supporting Information Files

[SI Appendix \(PDF\)](#)