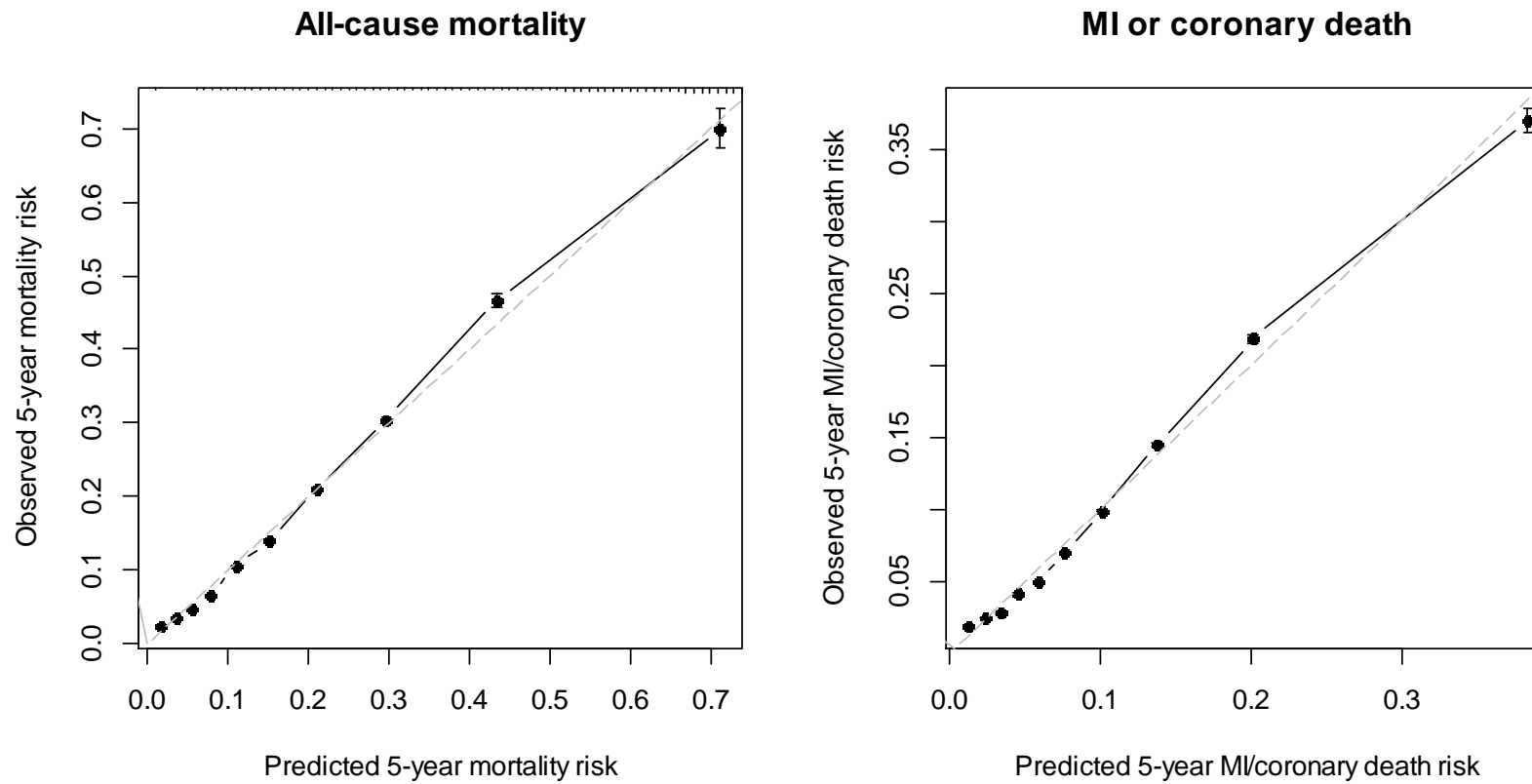
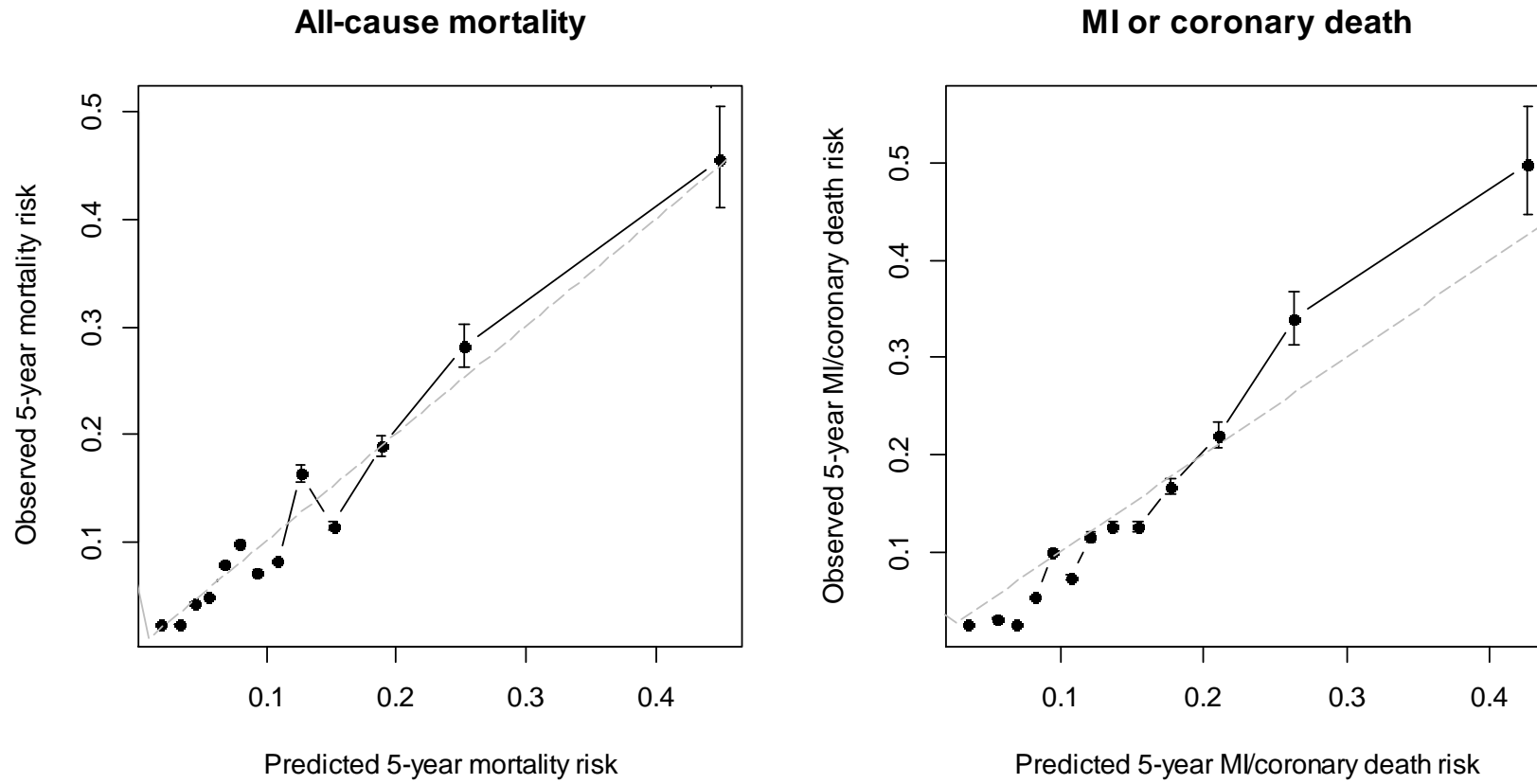


eFigure1 Calibration of 5-year risk predictions for all-cause mortality and non-fatal MI or coronary death based on internal cross-validation (within CALIBER).



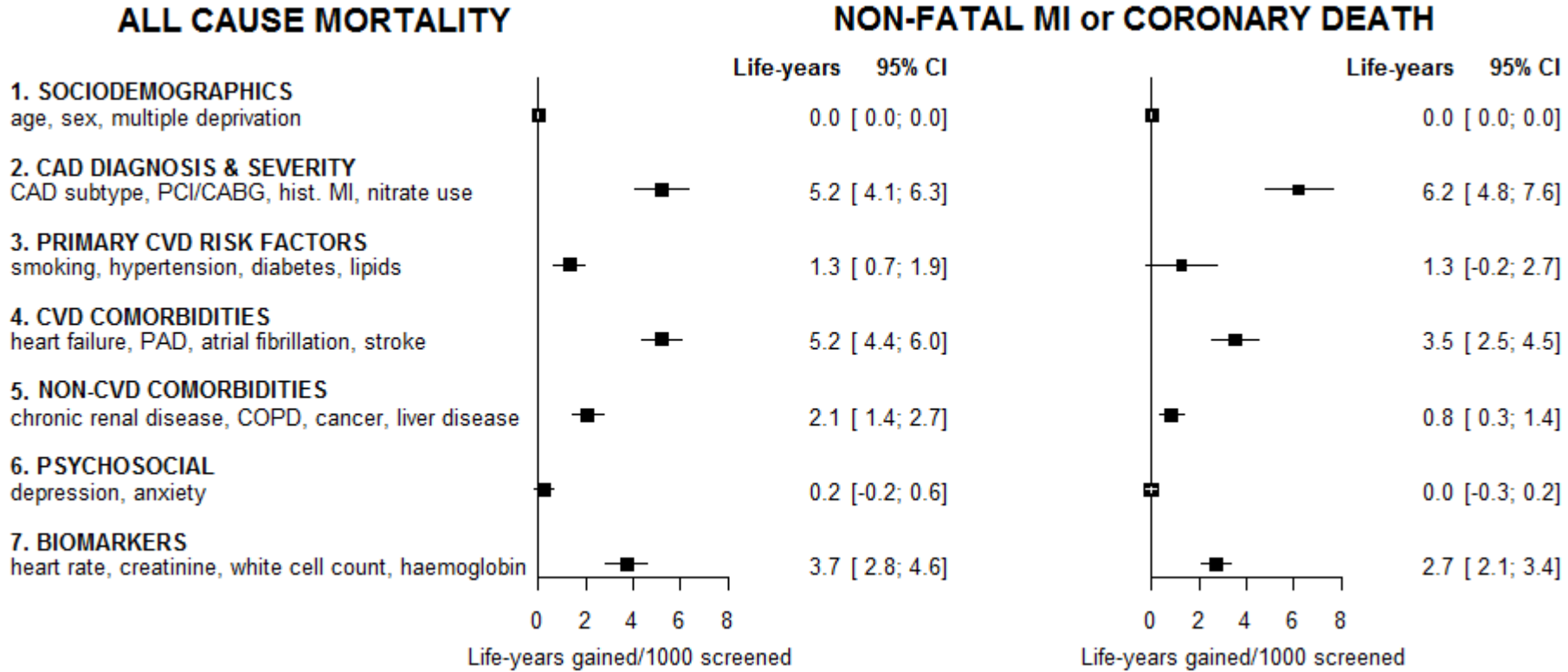
Observed risks are based on Kaplan-Meier. Individuals are split into 10 equally sized subgroups and the mean 5-year predicted risk is computed.

eFigure2 Calibration of 5-year risk predictions for all-cause mortality and non-fatal MI or coronary death based on external validation in patients from the ACRE study.



Observed risks are based on Kaplan-Meier. Individuals are split into 10 equally sized subgroups and the mean 5-year predicted risk is computed.

eFigure3 Number of life years gained (event-free life years for the non-fatal MI or coronary death endpoint) when the models are used to support management decisions for very high risk patients*.



* assuming that management is associated with hazard ratio 0.8 (20% risk reduction) and is cost-effective at very high risk (>20% over 5-years)

eFigure 4 Scoring tables to assess 5-year risk of death or MI/CHD death in stable CAD patients.

Age	Death		MI/CHD death		CAD DIAGNOSIS	Death	MI/CHD death	MEDICAL HISTORY	Death	MI/CHD death	LOOKUP TABLE**		
	MEN	WOM	MEN	WOM							5-year risk	Death score	MI/CHD death score
30	23	0	33	0	Stable angina	0	0	Recurrent MI	2	8	1%	96	152
35	30	8	39	8	Angina symptoms*	3	9	Heart failure	9	11	2%	110	170
40	36	16	44	16	Asymptomatic CHD	0	5	PAD	5	9	3%	118	181
45	42	24	50	24	Unstable angina	0	5	Atrial fibrillation	5	5	4%	123	188
50	49	32	55	32	STEMI	2	17	Stroke	6	4	5%	128	194
55	55	40	61	40	NSTEMI	5	22	Renal disease	3	3	10%	142	212
60	62	48	66	47	No PCI/CABG	11	16	COPD	3	2	15%	150	223
65	68	56	72	55	CVD risk factors	Death	MI/CHD death	Cancer	6	0	20%	157	231
70	74	64	78	63	Non smoker	0	0	Liver disease	10	3	25%	161	238
75	81	71	83	71	Current smoker	5	5	Depression	4	1	30%	166	243
90	100	95	100	95	Diabetic	4	8	Anxiety	3	0	40%	173	253
											50%	179	260

Total cholesterol mmol/L	Death	MI/CHD death	HDL mmol/L	Death	MI/CHD death	Heart rate, beats/min	Death	MI/CHD death	Creatinine μmol/L	Death	MI/CHD death	White cell count, 10 ⁹ /L	Death	MI/CHD death	Haemo globin, g/dL	Death	MI/CHD death
2	1	1	1.0	0	24	40	4	4	<15	0	0	5	6	7	2	64	63
3	1	3	1.5	0	22	60	8	9	15-39	1	2	10	12	13	4	57	56
4	1	4	2.0	0	19	80	11	13	40-69	2	4	15	18	20	6	50	49
5	1	6	2.5	0	17	100	15	18	70-99	3	6	20	23	26	8	43	42
6	1	7	3.0	0	15	120	19	22	100-149	4	8	25	29	33	10	36	35
7	0	9	3.5	0	13	140	23	27	150-199	6	10	30	35	40	12	29	28
8	0	10	4.0	0	11				200-299	7	20	35	41	46	14	21	21
9	0	11	4.5	1	9				300-399	11	20	40	46	53	16	14	14
10	0	13	5.0	1	6				>400	14	28	45	52	59	18	7	7

* Use of nitrates used as a proxy for angina symptoms

** If patient belongs to the 5th most deprived quintile of the population add 3 to the total score for either outcome (death or MI/CHD death).