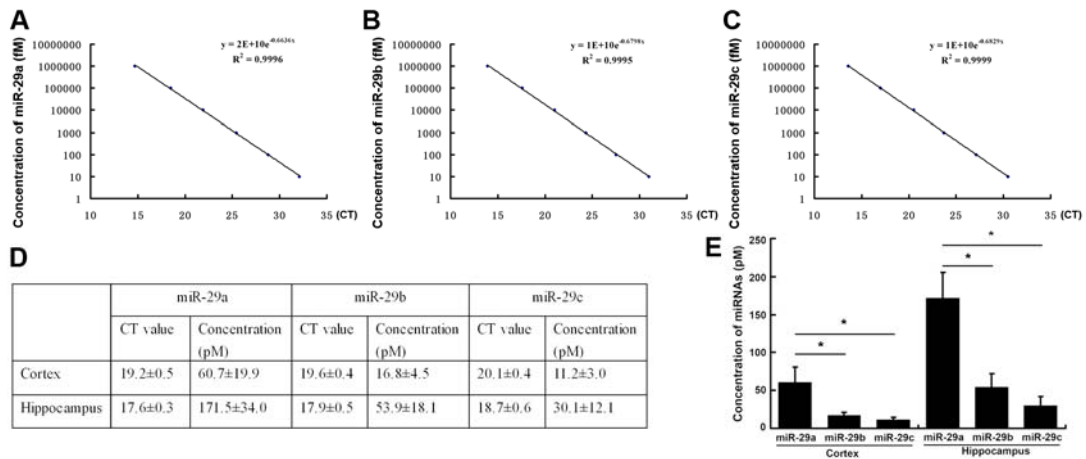
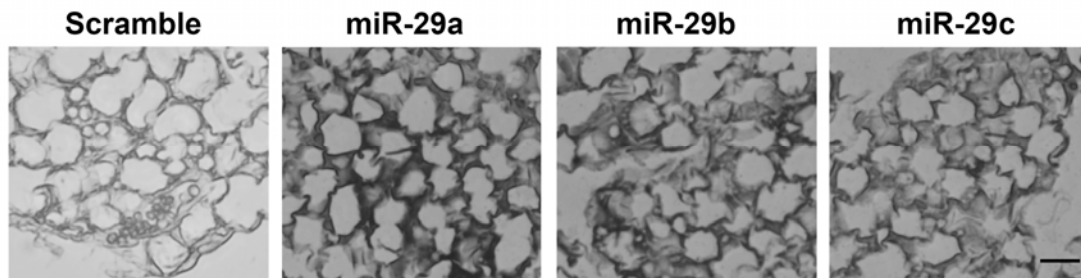


## Sfigure 1



Sfigure 1 (A-C) standard curves derived from different concentration of synthetic mature miR-29a, miR-29b and miR-29c respectively; (D) CT value and calculated concentration of miR-29a/b/c in the RNA samples derived from P60 mice cortex and hippocampus; (E) comparison of the levels of miR-29a/b/c in P60 mice cortex and hippocampus

## Sfigure 2



Sfigure 2 *In situ* hybridization of different members of miR-29 family in mice lung tissues as positive controls, Scale bar= 50µm.