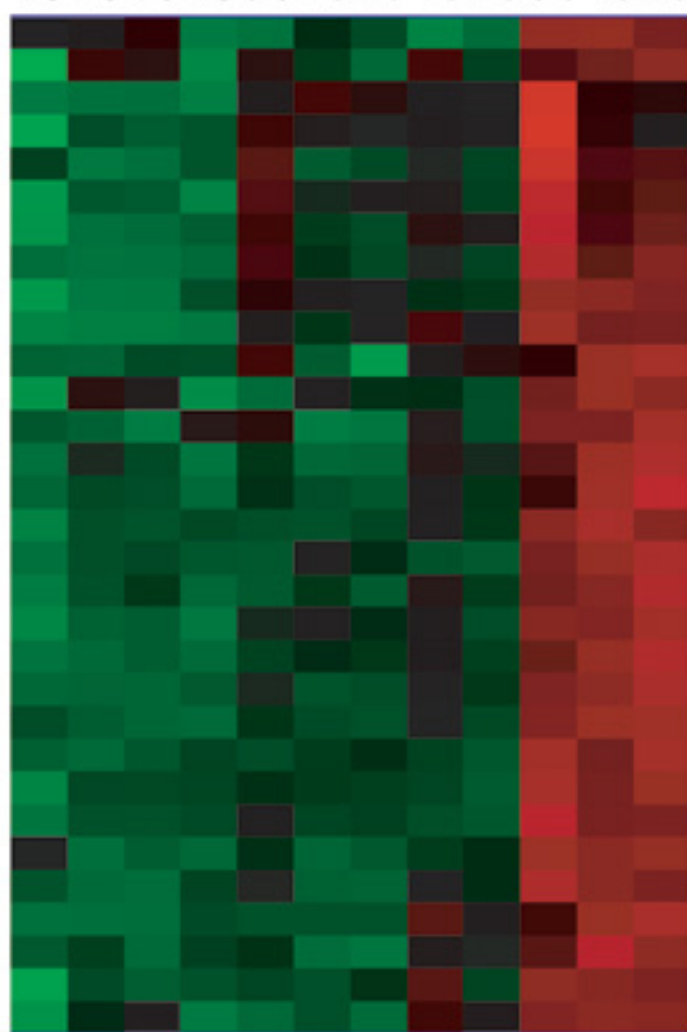
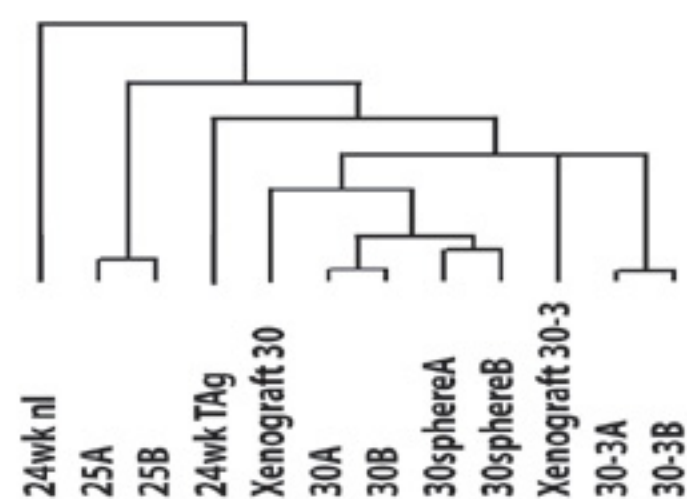
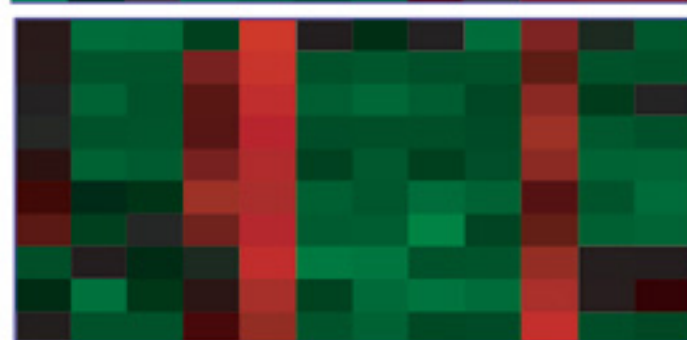
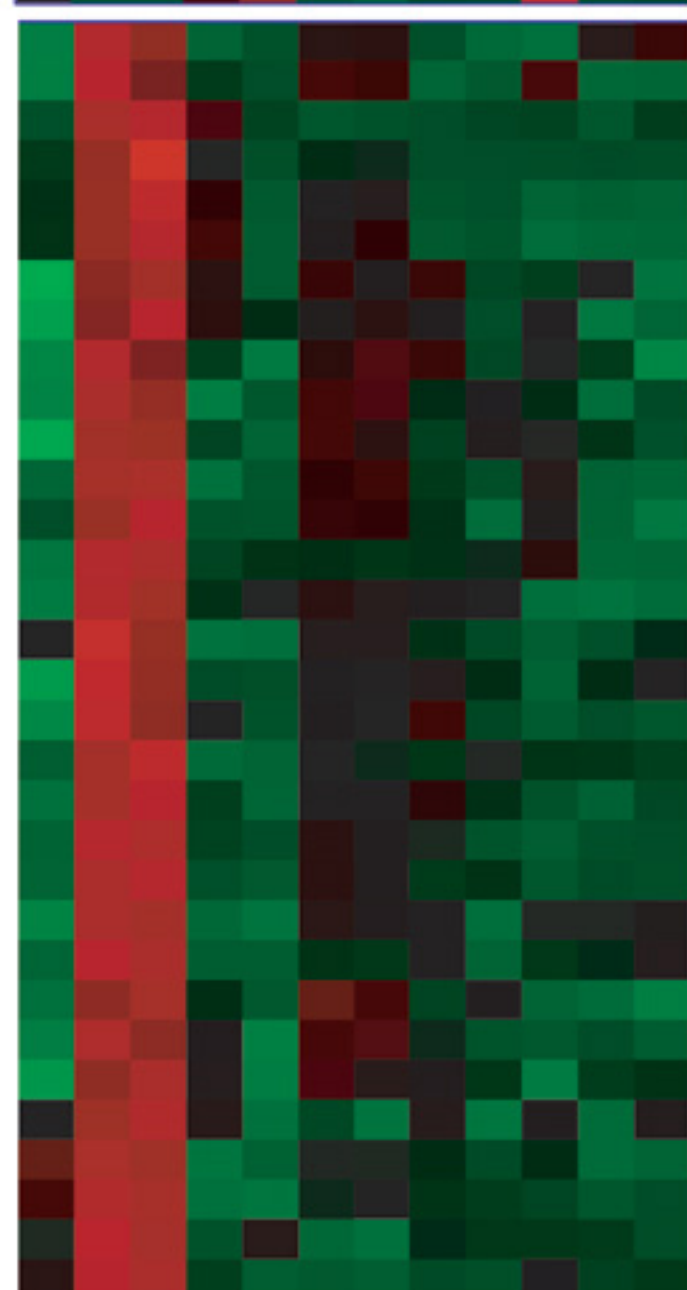


B

Rho GTPase activating protein 5
 glutamate receptor, ionotropic, AMPA2 (alpha 2)
 pleiomorphic adenoma gene-like 1
 M11988:Homeo box A6 /cds=(0,293) /gb=M119
 protein S (alpha)
 src family associated phosphoprotein 2
 interferon-induced protein with tetratricopeptide
 calcitonin/calcitonin-related polypeptide, alpha
 calcium/calmodulin-dependent protein kinase II
 dopamine receptor 2
 hypothetical protein 5031404N19
 odd Oz/ten-m homolog 1 (Drosophila)
 phosphoserine/threonine/tyrosine interaction protein
 adaptor-related protein complex AP-4, sigma 1
 RIKEN cDNA 4930578F06 gene
 polymerase (DNA directed), epsilon 2
 hypothetical protein 6720461H18
 interferon-related developmental regulator 1
 Neural precursor cell expressed, NEDD9
 expressed sequence AU021838
 proteasome subunit, alpha
 transketolase
 cofilin 2, muscle
 ADP-ribosylation-like 4
 melanoma antigen, family L, 2
 DNA segment, Chr 14, ERATO DoI 817
 RIKEN cDNA 2700097O09 gene
 guanylate cyclase 2c
 RIKEN cDNA 4930578F06 gene
 RIKEN cDNA 0710001P09 gene
 solute carrier family 7



xanthine dehydrogenase
 cathepsin S
 matrix metalloproteinase 12
 insulin-like growth factor binding protein 3
 insulin-like growth factor binding protein 2
 lectin, galactose binding, soluble 3
 TYRO protein tyrosine kinase binding protein
 proteasome (prosome, macropain) subunit, beta type 8
 basic helix-loop-helix domain containing, class B2
 regulator of G-protein signaling 5



thyrotropin releasing hormone receptor
 fibroblast growth factor 13
 low density lipoprotein receptor-related protein 4
 X05546:Murine (DBA/2) mRNA fragment for gag related peptide
 X16670:Mouse RNA for type IIB intracisternal A-particle (IAP) element encoding int...
 X04120:Intracisternal A particles, Thbd linked
 cyclin E2
 Mus musculus sodium channel 27 mRNA fragment.
 RIKEN cDNA E430036I04 gene
 single-minded 2
 hyperpolarization-activated, cyclic nucleotide-gated K+ 2
 activated leukocyte cell adhesion molecule
 vacuolar protein sorting 35
 somatostatin receptor 2
 gamma-aminobutyric acid (GABA-A) receptor, subunit gamma 2
 nuclear receptor interacting protein 1
 brain derived neurotrophic factor
 glycogenin 1
 semaphorin 3A
 origin recognition complex, subunit 4-like (S. cerevisiae)
 glycoprotein m6b
 hydroxysteroid (17-beta) dehydrogenase 7
 RIKEN cDNA 5830406C15 gene
 thrombospondin 1
 DNA methyltransferase 3A
 non-POU-domain-containing, octamer binding protein
 retinoblastoma 1
 multiple PDZ domain protein
 aldehyde dehydrogenase family 1, subfamily A1
 SH3 domain protein D19
 X-linked lymphocyte-regulated 4
 midline 2