

Electronic Supplementary Material - Drug Safety

Dose-specific adverse drug reaction identification in electronic patient records: temporal data mining in an inpatient psychiatric population

Robert Eriksson,^{1,2} Thomas Werge,³ Lars Juhl Jensen,¹ and Søren Brunak^{1,2,#}

¹NNF Center for Protein Research, Department of Disease Systems Biology, Faculty of Health and Medical Sciences, University of Copenhagen, DK-2200 Copenhagen, Denmark.

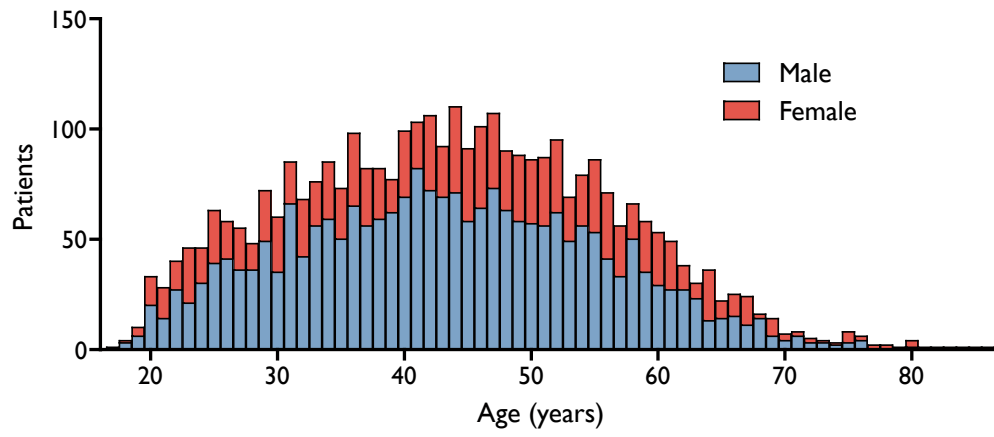
²Center for Biological Sequence Analysis, Department of Systems Biology, Technical University of Denmark, DK-2800 Lyngby, Denmark.

³The Research Institute of Biological Psychiatry, Mental Health Centre Sct. Hans, Copenhagen University Hospital, DK-4000 Roskilde, Denmark.

#Corresponding author: soren.brunak@cpr.ku.dk

Online Fig. 1 2

Online Fig. 1



Online Fig. 1. Age and gender distribution of the study population