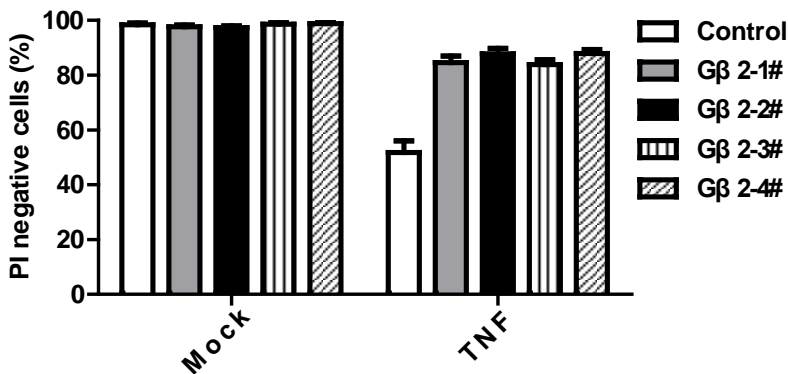
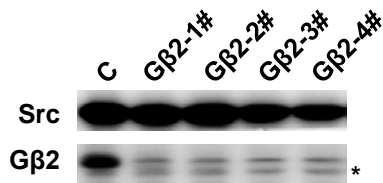


**A****B**

Gβ1 (1) MSEL**D**QLRQEA**E**QLK**N**QIRDARKAC**A**D**A**TLSQITNNI**I**DPVGRIQMRTRRTRLRGHL  
 Gβ2 (1) MSEL**E**QLRQEA**E**QLR**N**QIRDARKAC**G**D**S**TLTQITAGL**L**DPVGRIQMRTRRTRLRGHL

Gβ1 (56) AKIYAMHWG**T**DSRLLVSASQDGKLI**I**WDSYTTNKVHAIPLRSSWVMT**C**AYAPSGN  
 Gβ2 (56) AKIYAMHWG**T**DSRLLVSASQDGKLI**I**WDSYTTNKVHAIPLRSSWVMT**C**AYAPSGN

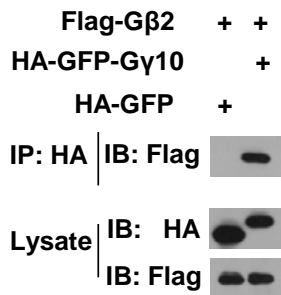
Gβ1 (111) YVACGGLDNICSIY**N**LKTREGNVRV**S**REL**A**GHTGYLSCCRFLDDN**Q**I**V**TSSGDTT  
 Gβ2 (111) FVACGGLDNICSI**Y**SLKTREGNVRV**S**REL**P**GHTGYLSCCRFLDDN**Q**I**I**TSSGDTT

Gβ1 (166) CALWDIETGQQT**T**TT**F**T**G**H**T**GDVMSLSLAPD**T**RL**F**VSGACDAS**A**KLWDVRE**G**MCRQ  
 Gβ2 (166) CALWDIETGQQT**V**G**F**A**G**H**S**GDVMSLSLAPD**G**R**T**FVSGACDAS**I**KLWDVR**D**S**M**CRQ

Gβ1 (221) T**F**T**G**HESDINA**I**C**F**FPNG**N**A**F**ATGSDDATCRLFDL**R**ADQ**E**LM**T**YSHDNI**I**CGITS  
 Gβ2 (221) T**F**I**G**HESDINA**V**A**F**FPNG**Y**A**F**TTGSDDATCRLFDL**R**ADQ**E**LL**M**YSHDNI**I**CGITS

Gβ1 (276) V**S**F**S**K**S**GRLLLAGYDDFNC**N**V**W**DAL**K**A**D**RAGVLAGHDNRV**S**CLGVTDDGMAVAT**G**  
 Gβ2 (276) V**A**F**S**R**S**GRLLLAGYDDFNC**N**I**W**DAM**K****G**D**R**AGVLAGHDNRV**S**CLGVTDDGMAVAT**G**

Gβ1 (331) **S**WDS**F**L**K**I**W**N  
 Gβ2 (331) **S**WDS**F**L**K**I**W**N

**C**

**Supplementary information, Figure S2.** G $\beta$ 2 is required for TNF induced necroptosis in L929 cells, related to Figure 3. (A) The protein quantities of G $\beta$ 2 were analyzed in *G $\beta$ 2* knockout L929 cell lines. *G $\beta$ 2* knockout cell lines were named as G $\beta$ 2-1#, G $\beta$ 2-2#, G $\beta$ 2-3#, and G $\beta$ 2-4#. Control and *G $\beta$ 2* knockout cell lines were challenged with TNF (10 ng/ml) and cell viability were measured. \*, non specific band. C, Control cells. (B) Alignment of amino acid sequences of G $\beta$ 1 and G $\beta$ 2. The sequences were aligned using Invitrogen alignX software. Identical amino acids were denoted by black backgrounds and similar amino acids were denoted by grey backgrounds. (C) G $\gamma$ 10 interacts with G $\beta$ 2. Flag-tagged G $\beta$ 2 was co-transfected with HA-GFP or HA-GFP-G $\gamma$ 10 in 293T cells. 36 hours post transfection, whole cell lysates were immunoprecipitated with anti-HA-beads. The immunoprecipitates and total cell lysates were analyzed by Western blot using anti-Flag and anti-HA antibodies. Data in (A) depicts mean  $\pm$  SEM of one representative experiment of three.