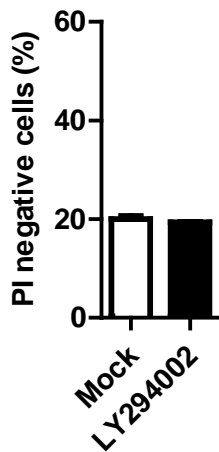
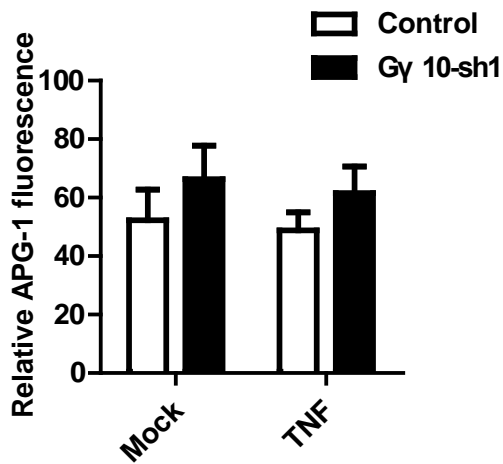
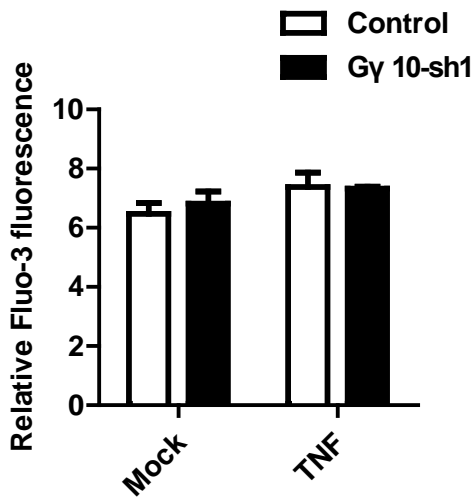
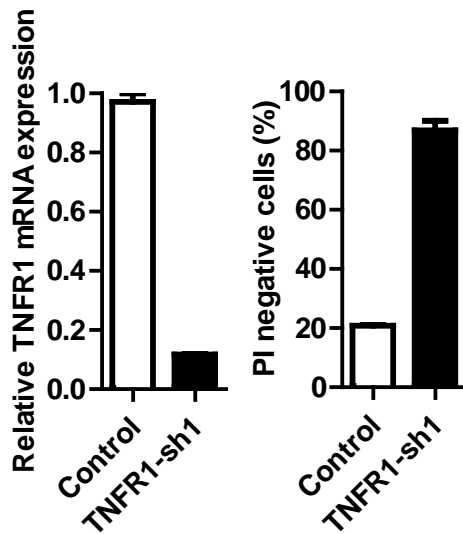


A**B****C****D**

Supplementary information, Figure S4. Src is activated in L929 cells by TNF stimulation in a $G\gamma 10$ dependent but necrosome independent manner, related to Figure 5. (A) Cells were pretreated with or without PI3K inhibitor LY294002 (20 μ M) for 12 hours and then challenged with TNF (10 ng/ml) for 12 hours. Cell viability was measured using PI exclusion. (B) Control and $G\gamma 10$ knockdown cells were challenged with TNF (10 ng/ml) for 10 hours. Then the cellular potassium concentrations were measured as described in Experimental Procedures. (C) Control and $G\gamma 10$ knockdown cells were challenged with TNF (10 ng/ml) for 6 hours. Then the cellular calcium concentrations were measured as described in Experimental Procedures. (D) TNF induced Src activation depends on TNFR1. L929 cells were infected with lentivirus expressing *TNFR1* shRNA or control shRNA. After 48 hours, knockdown efficiency of *TNFR1* was determined using qRT-PCR. Cell viability was measured after stimulation with TNF (10 ng/ml) for 12 hours. Data in (A) - (D) depict mean \pm SEM of one representative experiment of three or more.