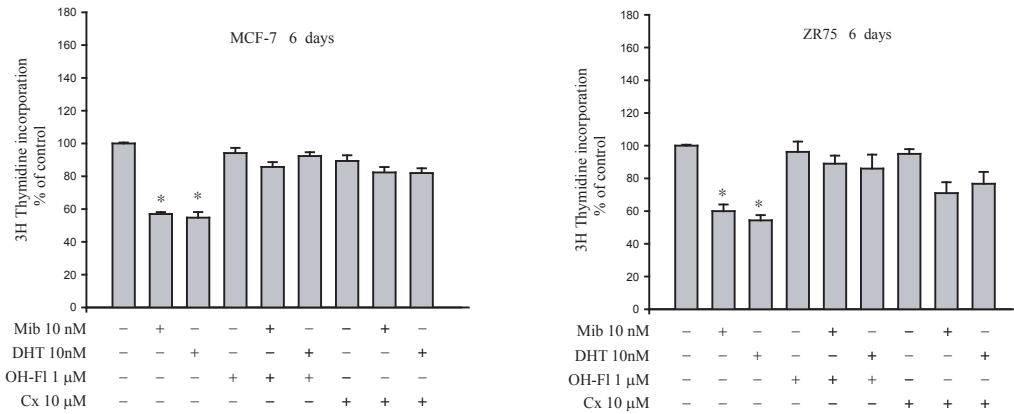
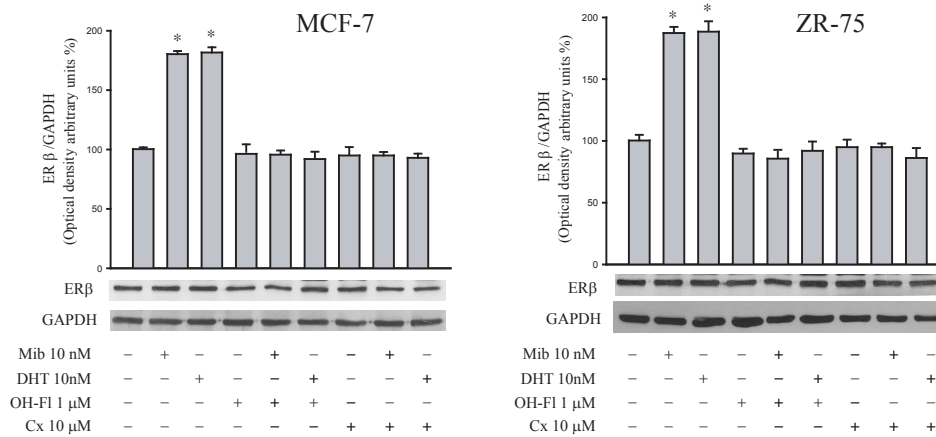


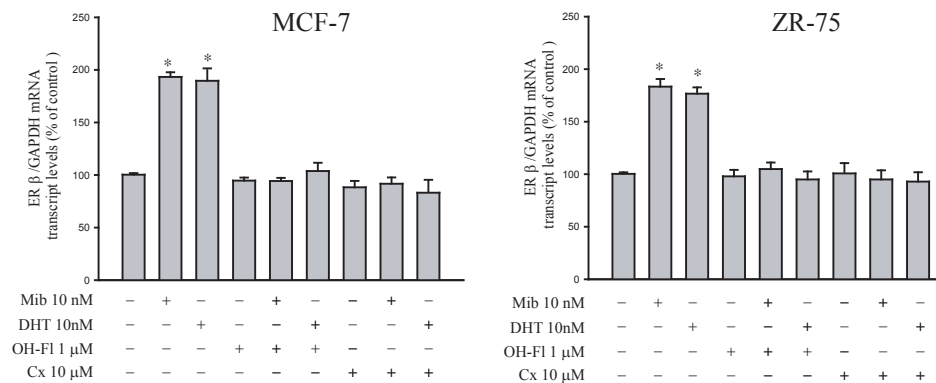
A



B



C



Additional file 1, Figure S1. Hydroxyflutamide (OH-FI) and Bicalutamide (Cx) reverse mibolerone's or DHT's effects on cell proliferation and ER beta expression in breast cancer cells.

(A) MCF-7 and ZR-75 cells were treated for 6 days with the indicated concentrations of Mib, DHT, OH-FI and Cx. MCF-7 and ZR-75 cell proliferation were evaluated by [3H]thymidine incorporation analysis. Columns, mean of three independent experiments each performed with triplicate samples expressed as percent of control;

(B) Bottom panel, Western Blot analysis of ER beta expression in cells treated for 48 hours as indicated. GAPDH was used as loading control. Upper panel, the histograms represent the mean ± S.D. of three independent experiments in which band intensities were evaluated in terms of optical density arbitrary units and expressed as the percentage of the control assumed to be 100%.

(C) Real-Time RT-PCR for analyzing ER beta mRNA levels in cells treated as indicated. Each sample was normalized to GAPDH RNA content. Data represent the- mean ± S.D. of values from three separate RNA samples expressed as percentage of control assumed to be 100%.

*, P<0.01 compared to vehicle treated-cells.