

## SUPPLEMENTAL MATERIALS

Supplemental Figure S1

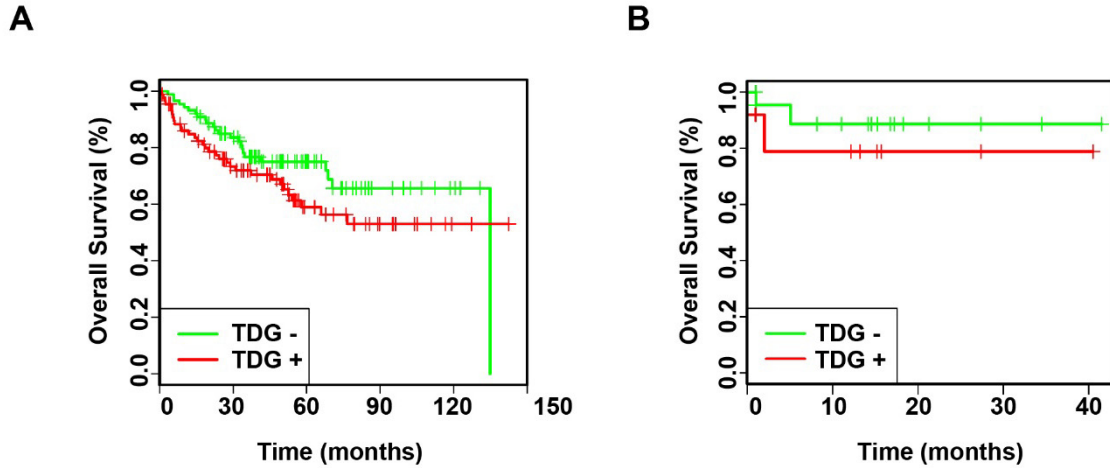


Fig. S1. TDG expression versus patients' survival probability. Patients were classified into TDG high expression and TDG low expression groups based on the median TDG expression level. *A.* Smith et al,  $P=0.127$ . *B.* TCGA,  $P=0.136$ . Kaplan-Meier estimated survival curves in these two groups are shown. Lower TDG expression appeared to be associated with longer survival time, although the association was not statistically significant (log-rank  $P=0.127$  for the Smith data and  $P=0.136$  for TCGA data). In addition, the proportional hazards model was also used to study the association between TDG expression and patient survival, where the TDG expression was treated as a continuous variable. The estimated hazard ratio was 1.53 (95% CI 0.84 to 2.77,  $P=0.161$ ) based on the Smith data, and was 6.04 (95% CI 0.96 to 37.84,  $P=0.055$ ) based on TCGA data. The analysis also indicated that TDG expression might be negatively correlated with patient survival, although it was not statistically significant.

Supplemental Table S1

Patient ID	Tumor		Adjacent		Normal	
	%	intensity	%	intensity	%	intensity
A	3	2	1	1	2	1
B	4	3	3	3	2	2
C	4	3	1	1	1	1
D	3	2	1	2	1	1
E	3	3	2	3	2	1
F	3	3	1	1	1	1
G	2	2	1	1	2	3
H	3	1	1	1	1	2
I	3	4	1	1	3	2
J	3	2	1	1	1	1
K	4	3	1	1	1	1
L	2	2	3	2	2	2
M	2	3	2	1	1	2
N	2	1	1	1	1	1
O	2	3	2	2	2	2
P	1	1	1	2	2	2
Q	1	1	1	1	1	1
R	1	1	1	1	2	2
S	1	2	1	1	1	1
T	1	1	3	1	2	2

Table S1. TDG expression in human colon cancer, adjacent and normal tissues.