

Figure S1. Alignment of Usp1 amino acid sequences

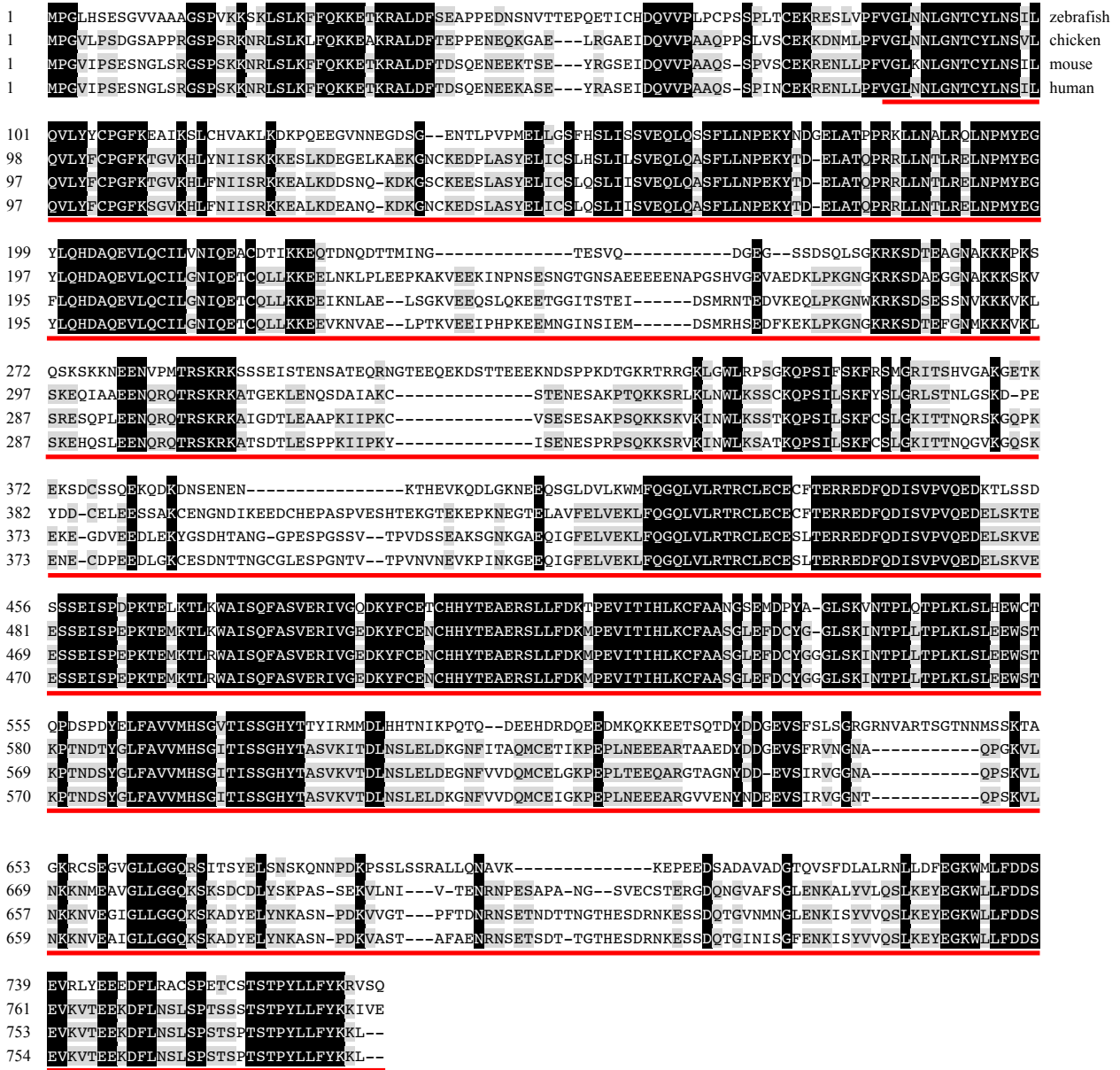


Figure S1. Alignment of Usp1 amino acid sequences. Alignment of zebrafish Usp1 (*Danio rerio*, NP_955873.1), chicken Usp1 (*Gallus gallus*, NP_001026461.1), mouse Usp1 (*Mus musculus*, AAH20007.1) and human Usp1 (*Homo sapiens*, NP_001017416.1). Zebrafish Usp1 bears 51.49%, 52.39% and 53.14% amino acids identity to its counterparts of chicken, mouse and human, respectively. Red line indicates the region of ubiquitin-specific protease (USP) domain.