

Figure S1

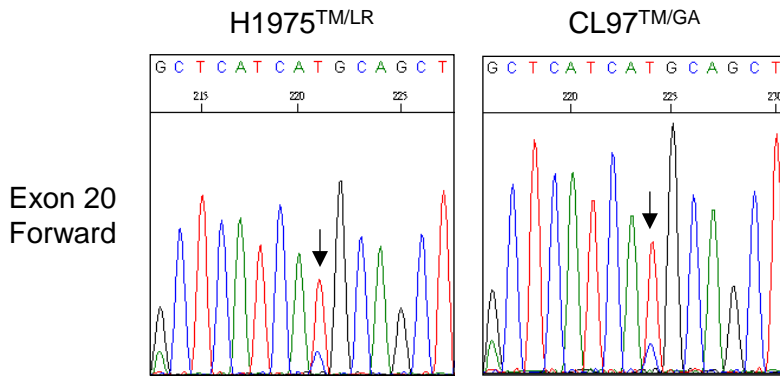


Figure S1. The mutation status of EGFR exon 20 in H1975^{TM/LR} and CL97^{TM/GA} cell lines. Genomic DNA of H1975^{TM/LR} and CL97^{TM/GA} cell lines were subjected to DNA sequencing. The arrows indicated that there is a C to T point mutation at nucleotide 2369 in both H1975^{TM/LR} and CL97^{TM/GA}.