

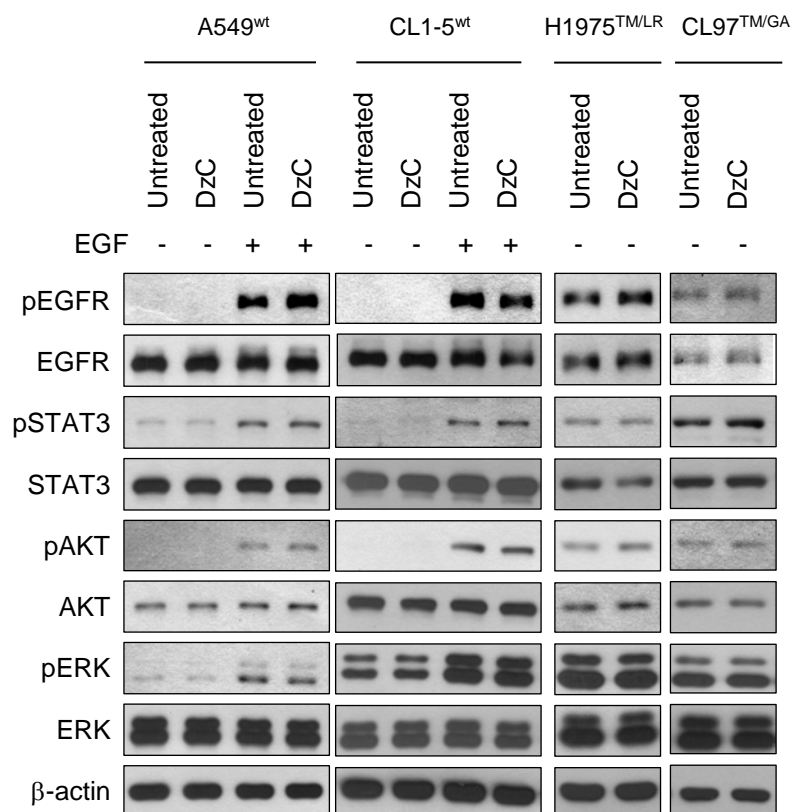
Figure S2

Figure S2. EGFR expression and downstream signaling is unaffected by DzC treatment. Cells without or with 100 nM DzC transfection were harvested 72 h after treatment. EGFR in wild-type cells was activated by adding 100 ng/ml EGF 15 min before cell lysates were harvested. Cell lysates were analyzed by immunoblotting with indicated primary antibodies.