

Figure S4

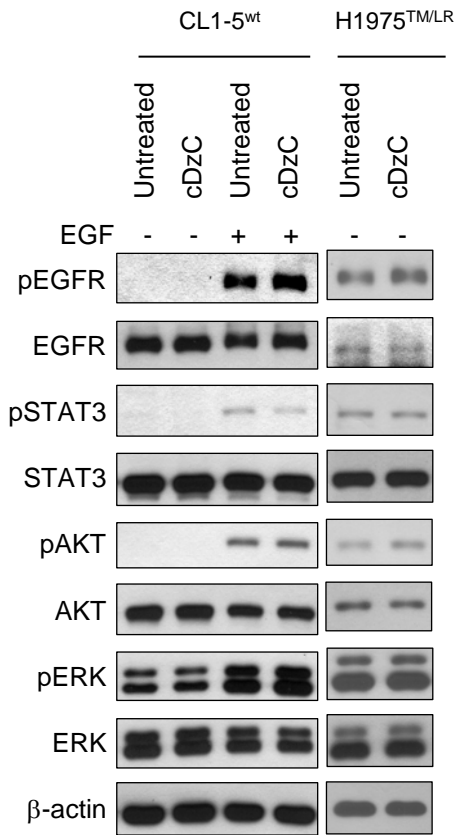


Figure S4. EGFR expression and downstream signaling is unaffected by cDzC treatment in CL1-5^{wt} and H1975^{TM/LR}. Cells without or with 100 nM cDzC transfection were harvested 72 h after treatment. EGFR in wild-type cells was activated by adding 100 ng/ml EGF 15 min before cell lysates were harvested. Cell lysates were analyzed by immunoblotting with indicated primary antibodies.