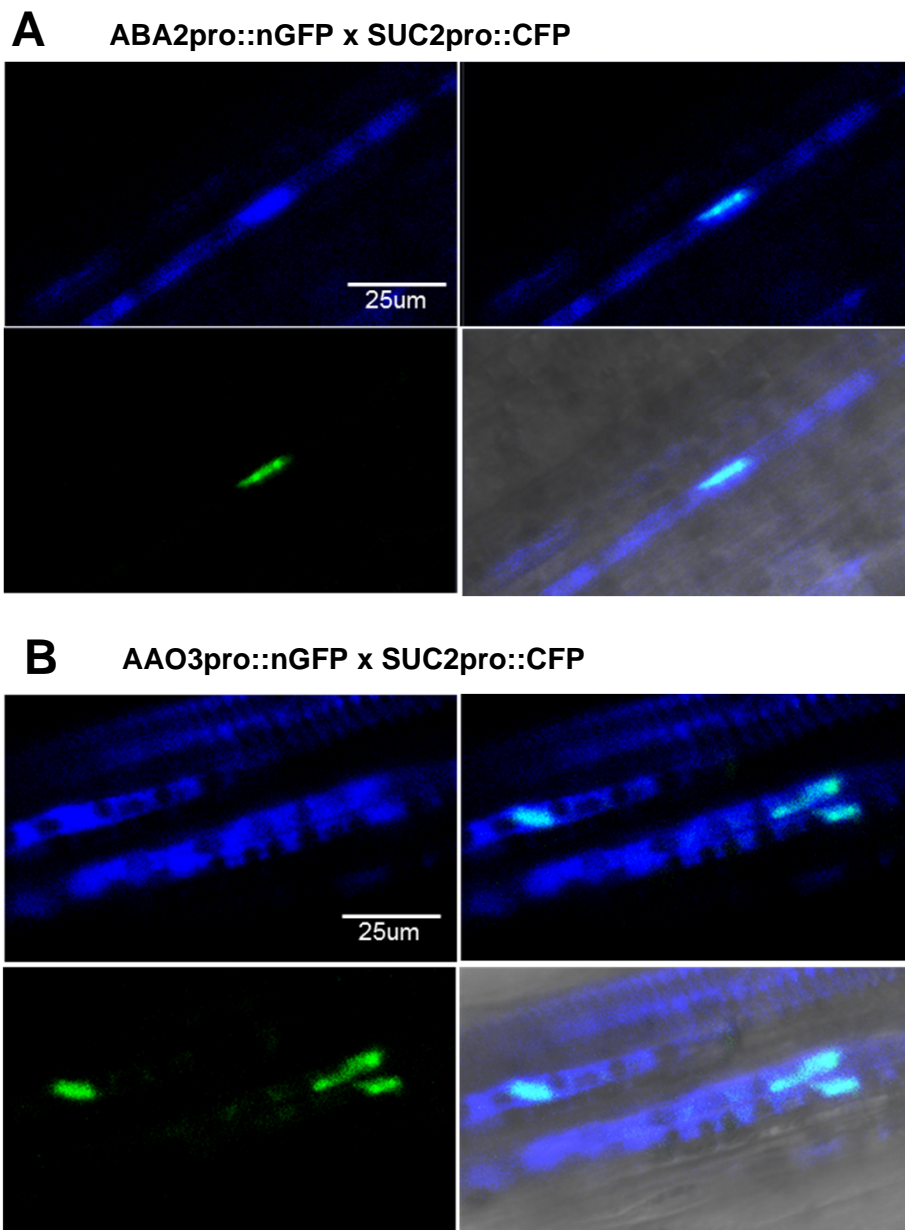


## Supplemental Figure 1



### Supplemental Figure 1.

#### Colocalization of *ABA2* or *AAO3* promoter-driven nGFP and *SUC2* promoter-driven CFP in *Arabidopsis* leaf vasculatures.

Confocal images of vascular tissues of leaf in 2-week-old plants were taken after crossing between the transgenic plants expressing *ABA2* (A, ABA2pro::nGFP x SUC2pro::CFP) and *AAO3* (B, AAO3pro::nGFP x SUC2pro::CFP) promoter-driven nGFP and transgenic plants expressing *SUC2* promoter-driven CFP. The two fluorophores CFP and nGFP were simultaneously visualized after filtering the chloroplast fluorescence off; CFP localization is shown in cyan (top left panel), nGFP localization is shown in green (bottom left panel), and both were merged (top right panel). Two fluorescence images and bright-field images were merged (bottom right panel).