

Supplemental data

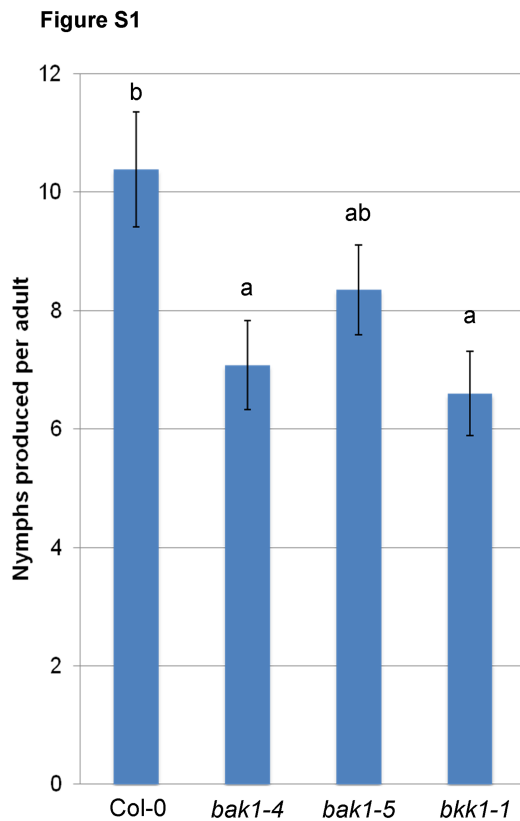


Figure S1. GPA reproduction on *bak1* and *bkk1* Arabidopsis mutants.

Bars show the means \pm SE of GPA nymph produced over a 14-day period on 5 plants per genotype of three independent experiments.

Different letters above the bars indicate significant differences at $P < 0.05$ ($n = 15$, $F_{3,59} = 3.998$; t probabilities calculated within GLM).

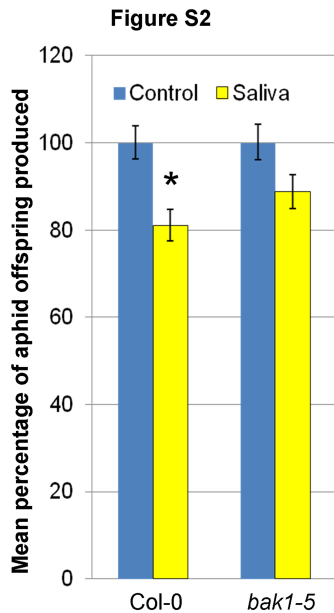


Figure S2. Induced resistance in Arabidopsis to the 3-10 kDa fraction of GPA saliva is BAK1 dependent. Bars show the means \pm SE of total nymphs produced per plant of three independent experiments ($n = 10$ per experiment). Nymph counts were normalized with water (control) set at 100%. $*P < 0.001$ (wild type Col-0 $F_{1,59} = 12.224$) and $P = 0.052$ (*bak1-5* mutant, $F_{1,59} = 3.773$).

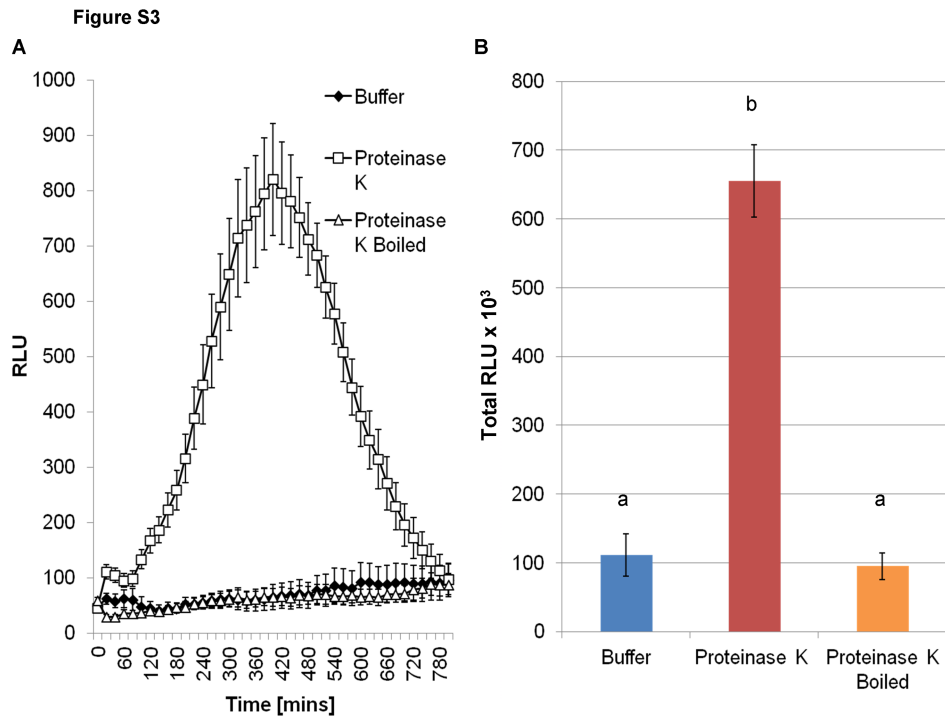


Figure S3. Proteinase K triggers a ROS burst in Arabidopsis.

ROS bursts were measured over a 600 min period. Bars show means \pm SE of $n = 16$ leaf discs per replicate. Data of one representative experiment is shown. The experiment was repeated three times with similar results. Letters indicates significant differences at $P < 0.01$ using ANOVA.

Table S1. Primers used in this study.

Gene name	Identifier	Use in study	Sequence (5' -> 3')
GAPDH	At1g13440	Reference gene	F AGGTCAAGCATTTCGATGC R AACGATAAGGTCAACGACACG
TIP41	At4g34270	Reference gene	F TCCATCAGTCAGAGGCTTCC R AAGAAAGCTCATCGGTACGC
FRK1	At2g19190	Marker gene	F ATCTTCGCTTGGAGCTTCTC R TGCAGCGCAAGGACTAGAG
CYP81F2	At5g57220	Marker gene	F AATGGAGAGAGCAACACAATG R ATACTGAGCATGAGCCCTTTG
PAD3	At3g26830	Marker gene	F TGCTCCCAAGACAGACAATG R GTTTTGGATCACGACCCATC