

SUPPORTING INFORMATION

⁶⁴Cu-Labeled of Inhibitors of Prostate Specific Membrane Antigen for PET Imaging of Prostate Cancer

Sangeeta Ray Banerjee¹, Mrudula Pullambhatla¹, Catherine A. Foss¹, Sridhar Nimmagadda¹, Riccardo Ferdani², Carolyn J. Anderson², Ronnie C. Mease¹, Martin G. Pomper¹

Russell H. Morgan Department of Radiology and Radiological Sciences, Johns Hopkins Medical
Institutions, Baltimore, MD 21231

Corresponding Author: Martin G. Pomper, M.D., Ph.D.
Johns Hopkins Medical Institutions
1550 Orleans Street, 492 CRB II
Baltimore, MD 21231
410-955-2789 (T)
443-817-0990 (F)
Email:mpomper@jhmi.edu

Co-corresponding Author: Sangeeta Ray Banerjee, Ph.D.
Johns Hopkins Medical Institutions
1550 Orleans Street, 4M07 CRB II,
Baltimore, MD 21287
Phone: 410-955-8697
Fax: 410-614-3147
Email:sray9@jhmi.edu

TABLE OF CONTENTS

1	Figure S1. Structure of ZJ43	S3
2.	Figure S2. In vivo blocking study of [⁶⁴Cu]6B using ZJ43	S3
3.	Spectral and HPLC data	S4-6

Figure S1. Structure of ZJ43

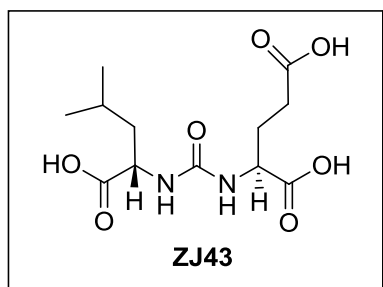


Figure S2.

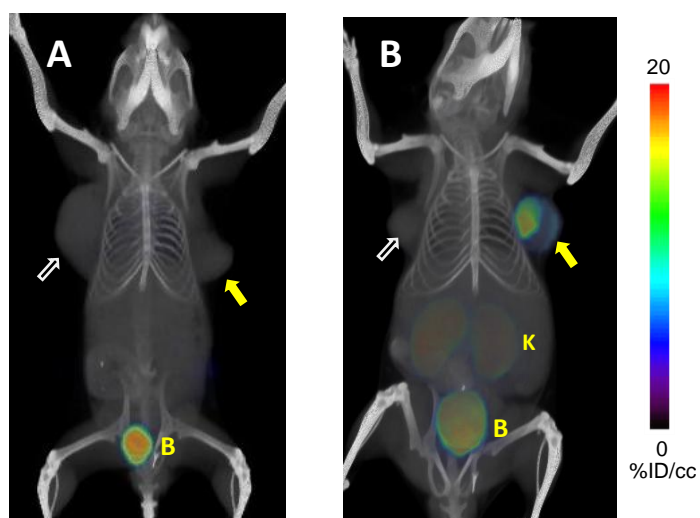


Figure S2. PET-CT images of PSMA+ PIP and PSMA- flu tumor-bearing male SCID mice using ~200 μCi of [^{64}Cu]6B per mouse. Images obtained with (left, A) and without (right, B) blockade of PSMA using the potent, selective PSMA inhibitor, ZJ43, as the blocking agent (50 mg/kg). Reduction of radiopharmaceutical uptake in both the tumor and kidneys (another PSMA+ site) upon co-treatment with ZJ43 provides a further check on PSMA-specific binding. Images were acquired after 30 min post injection. All images are normalized.

Figure S3. Preparative HPLC chromatograms for [^{64}Cu]3; radio-HPLC peak (top) and uv peak at 34 min is for unchelated 3 at $\lambda = 220$ nm (bottom).

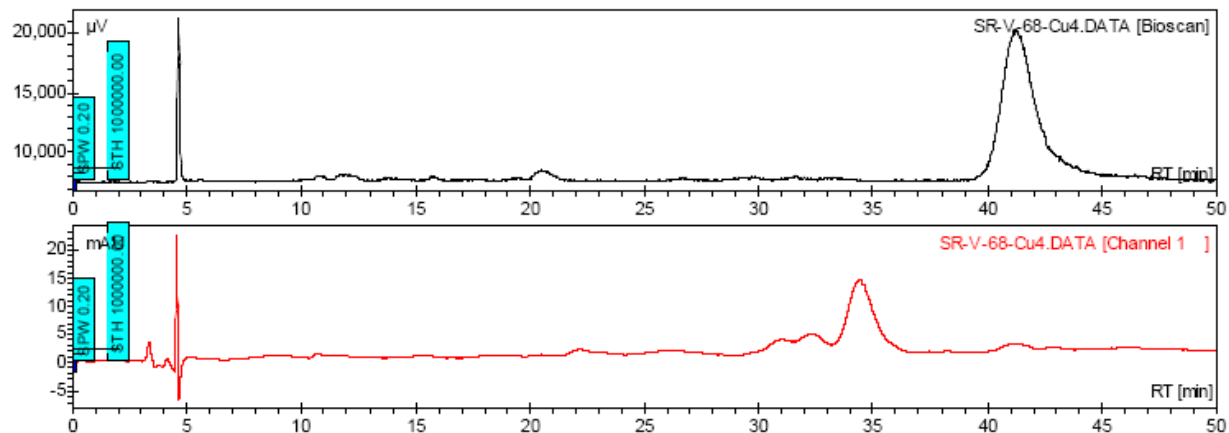


Figure S4. Preparative HPLC chromatograms for [^{64}Cu]4; radio-HPLC peak (top) and uv peak at 15 min for unchelated 4; $\lambda = 220$ nm (bottom), expanded to show purity of the radiolabeled product.

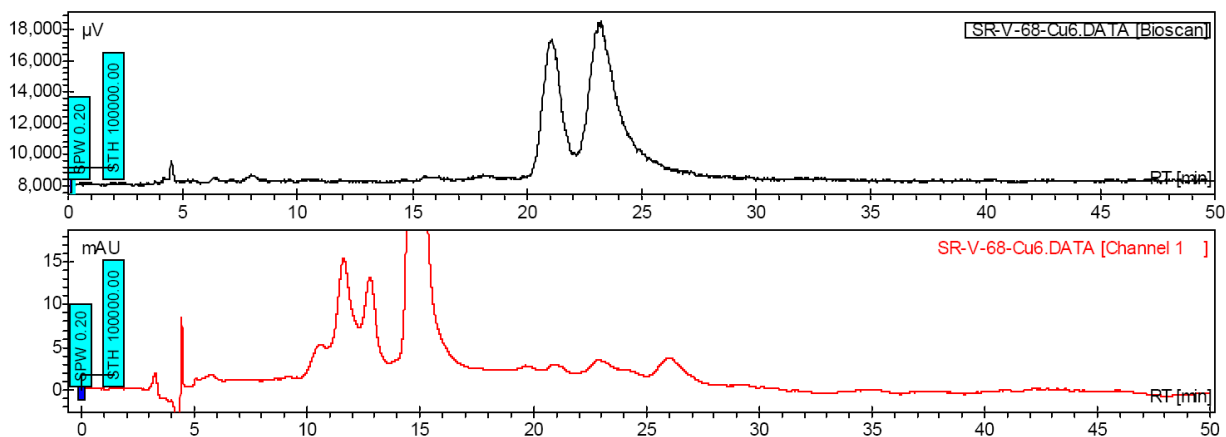


Figure S5. Preparative HPLC chromatograms for [⁶⁴Cu]**5**; radio-HPLC peak (top) and uv peak at 10 min for unchelated **5**, λ = 220 nM (bottom), expanded to show purity of the radiolabeled product.

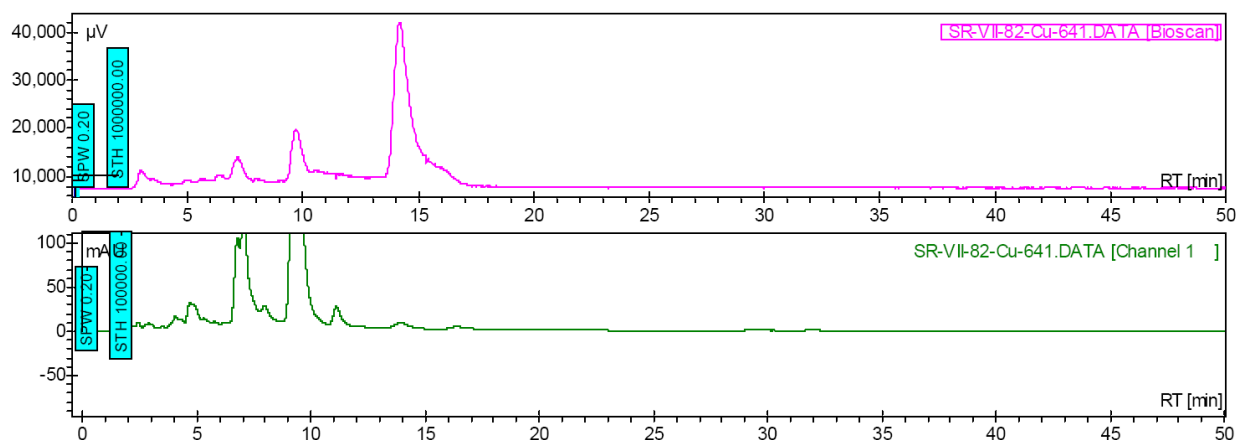


Figure S6. Preparative HPLC chromatograms for [⁶⁴Cu]**6**; radio-HPLC peak (top) and uv peak at 18-21 min for unchelated **6**, λ = 220 nM (bottom).

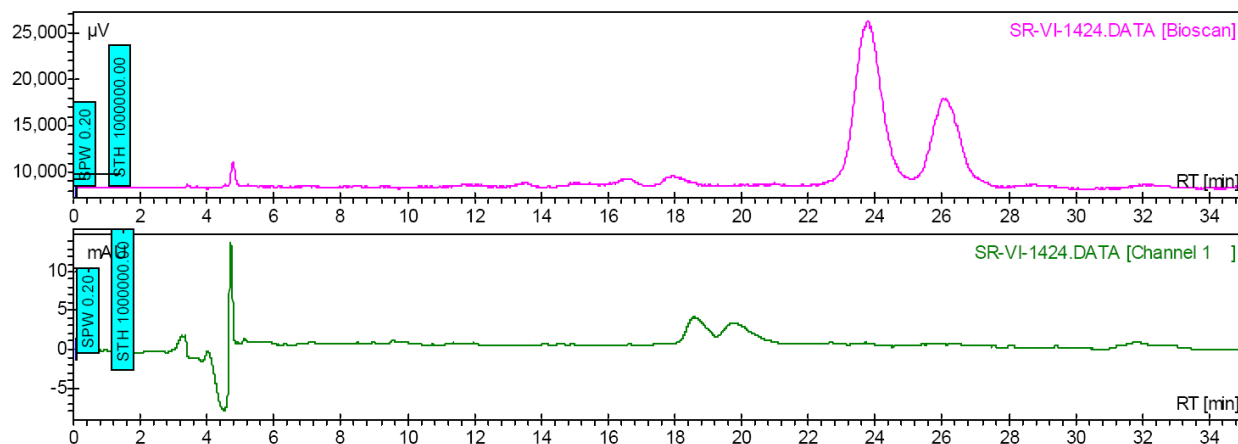


Figure S6. Preparative HPLC chromatograms for [⁶⁴Cu]7; radio-HPLC peak (top) and uv peak at 10.4 min for unchelated 7, λ = 220 nM (bottom).

