

Supplemental Material to:

Markus Habegger, Katrin Bomans, Katharina Diepold, Michaela Hook, Jana Gassner, Tilman Schlothauer, Adrian Zwick, Christian Spick, Jochen Felix Kepert, Brigitte Hienz, Michael Wiedmann, Hermann Beck, Philipp Metzger, Michael Mølhøj, Constanze Knoblich, Ulla Grauschopf, Dietmar Reusch, and Patrick Bulau

Assessment of chemical modifications of sites in the CDRs of recombinant antibodies: Susceptibility vs. functionality of critical quality attributes

2013; mAbs 6(2)

<http://dx.doi.org/10.4161/mabs.27876>

<https://www.landesbioscience.com/journals/mabs/article/27876/>

Supplementary Files: Figure Legends

Fig. 1:

SICs (upper panel), low-energy CID mass spectra, and resulting amino acid sequence of the mAb2 light chain peptide containing Asp-30 (A), Asp-31 (B), Asn-30/31 (C) and Asu-31 (D).

Fig. 2:

Low-energy CID mass spectra and resulting amino acid sequence of the mAb2 light chain peptide containing Asn-92 (upper panel) and Asp-92 (lower panel).

Fig. 3:

Low-energy CID mass spectra and resulting amino acid sequence of the mAb2 light chain peptide containing Met-4 (upper panel) and oxidized Met-4 (lower panel).

Fig. 4:

Low-energy CID mass spectra and resulting amino acid sequence of the mAb2 heavy chain peptide containing Met-107 (upper panel) and oxidized Met-107 (lower panel).

Fig. 5:

Low-energy CID mass spectra and resulting amino acid sequence of the mAb2 heavy chain peptide containing glycated Lys-33

Figure 1:

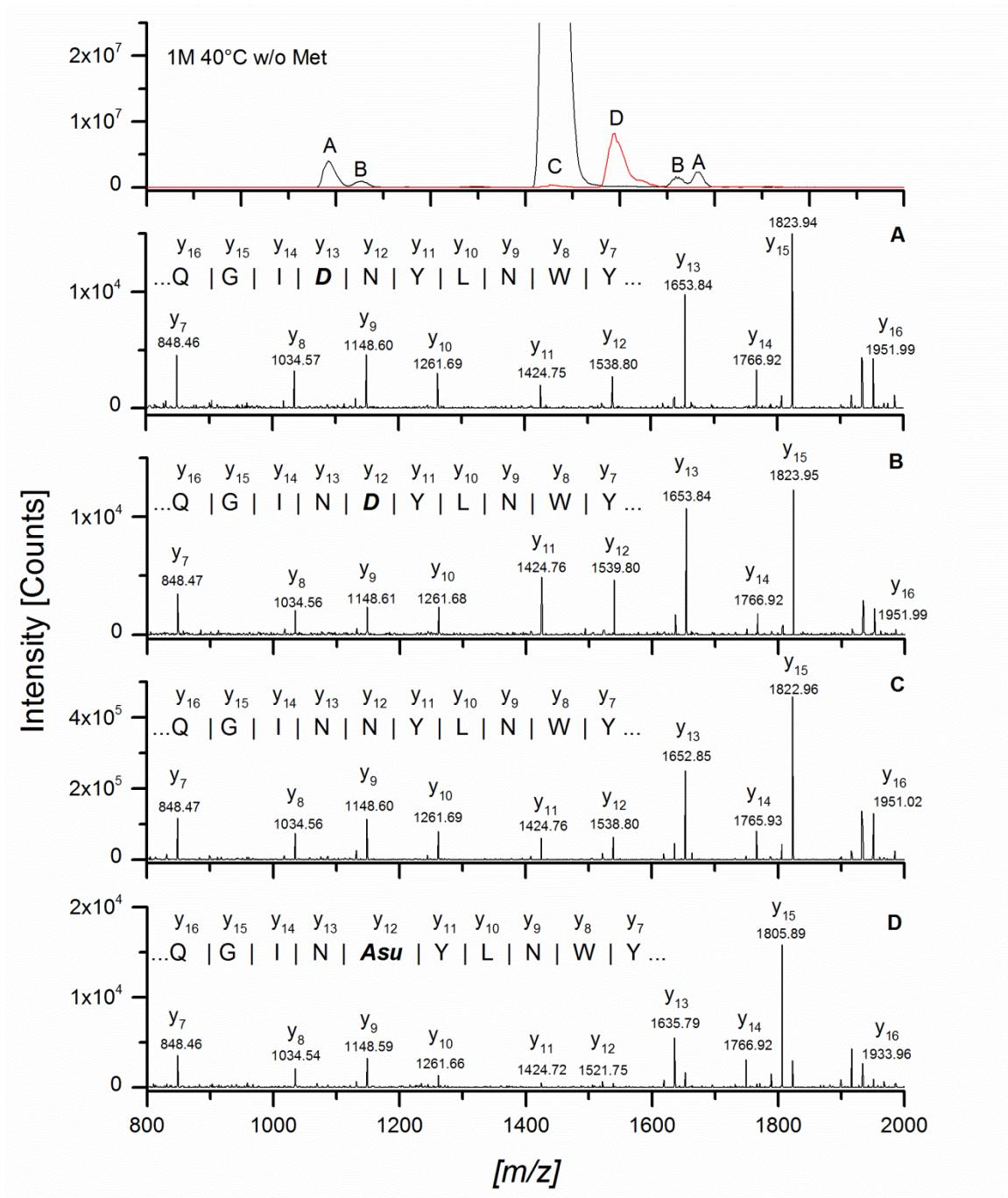


Figure 2:

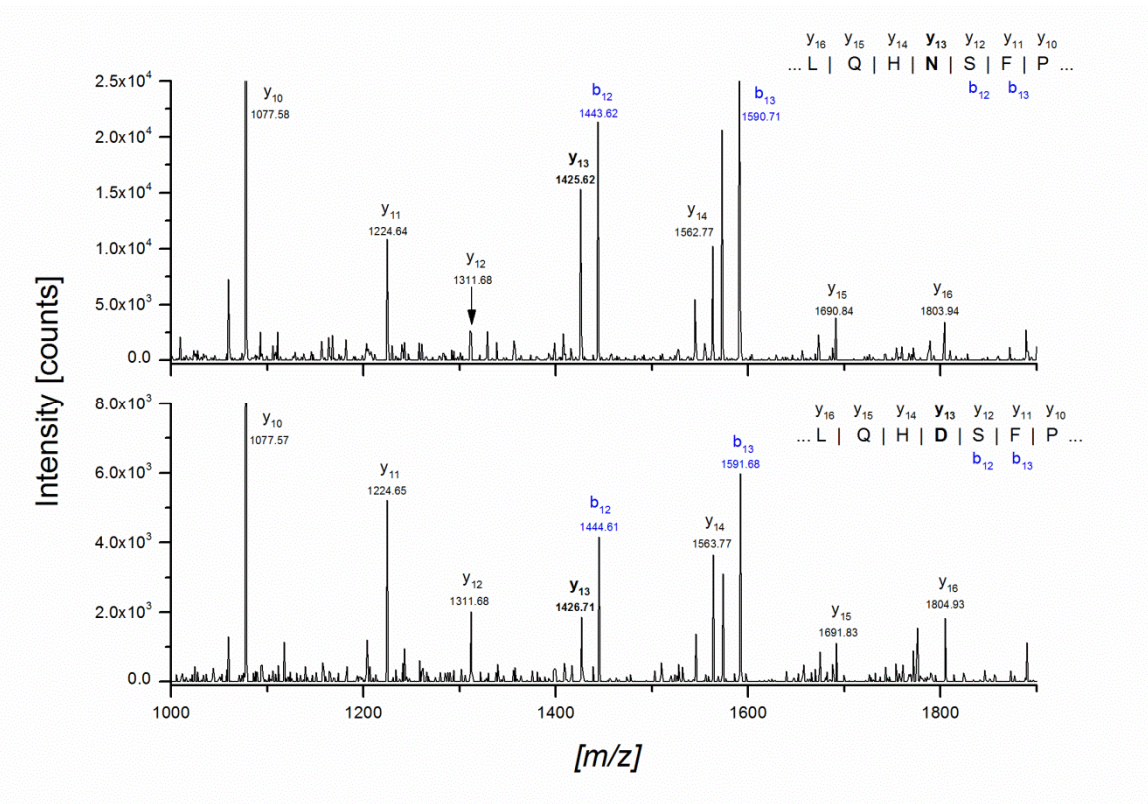


Figure 3:

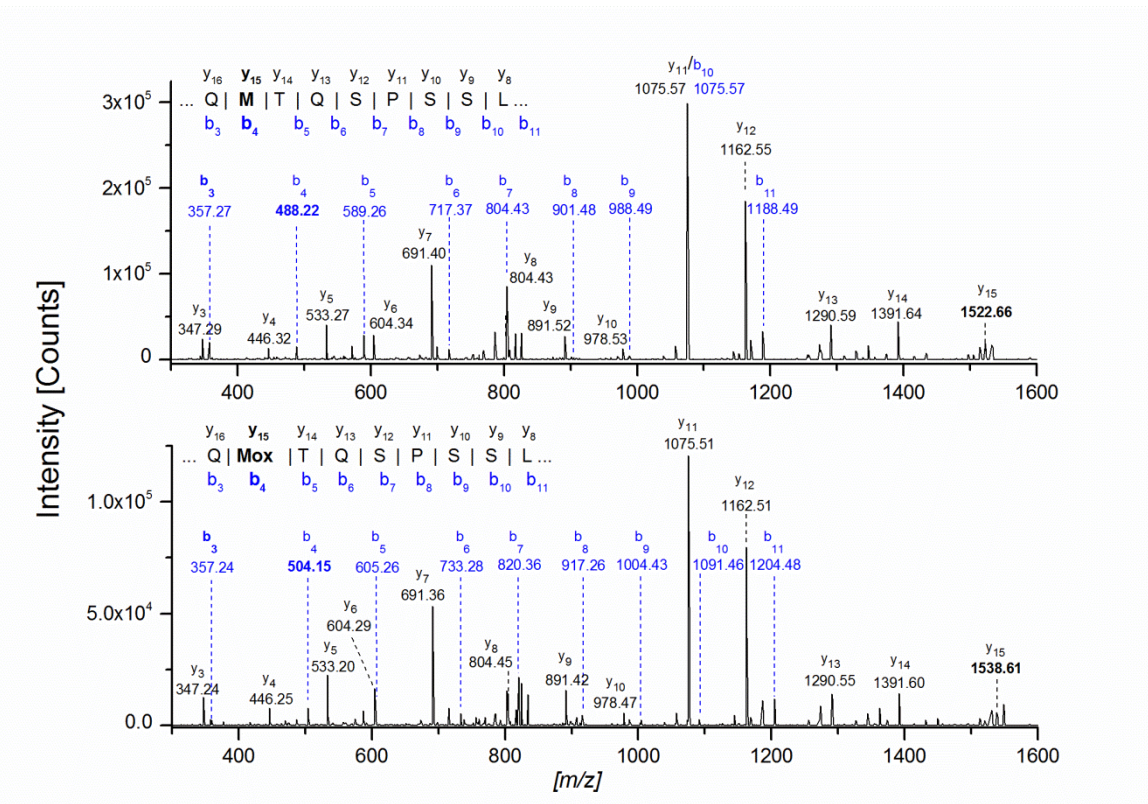


Figure 4:

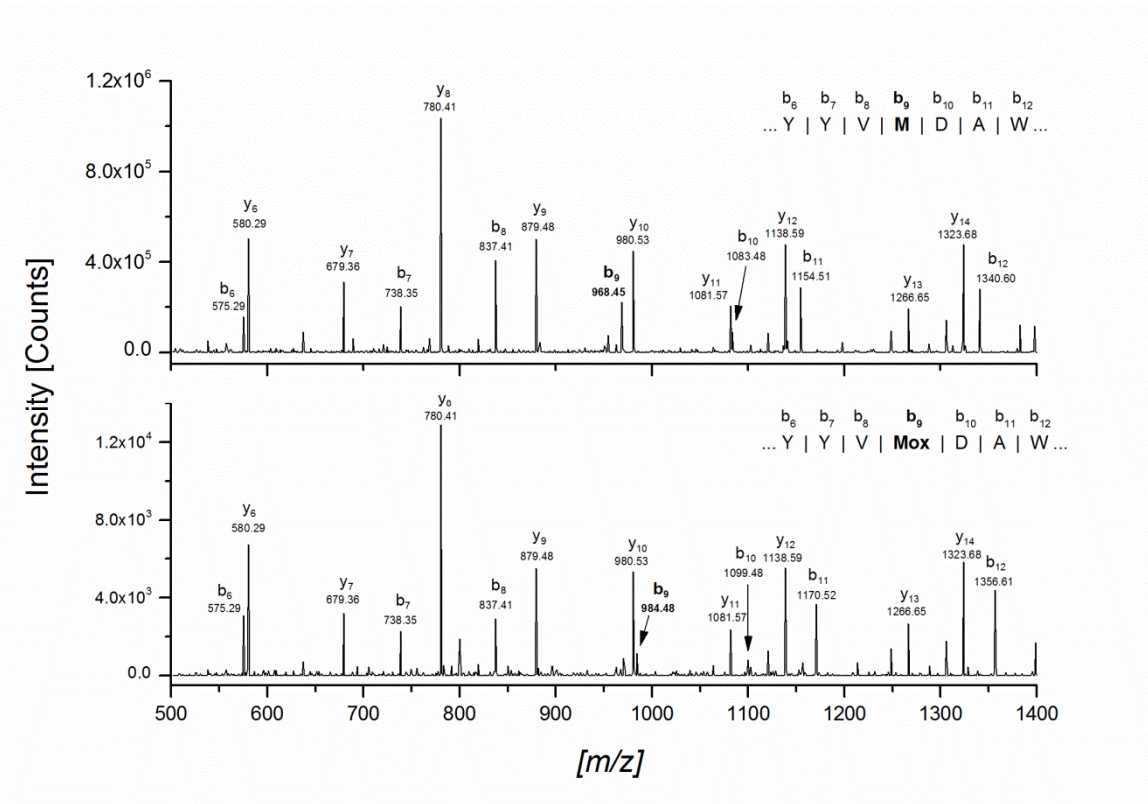


Figure 5:

