

Analytical and Bioanalytical Chemistry

Electronic Supplementary Material

A sensitive and selective LC-differential mobility-mass spectrometric analysis of allopregnanolone and pregnanolone in human plasma

Wen Jin, Michael Jarvis, Michal Star-Weinstock, Margaret Altemus

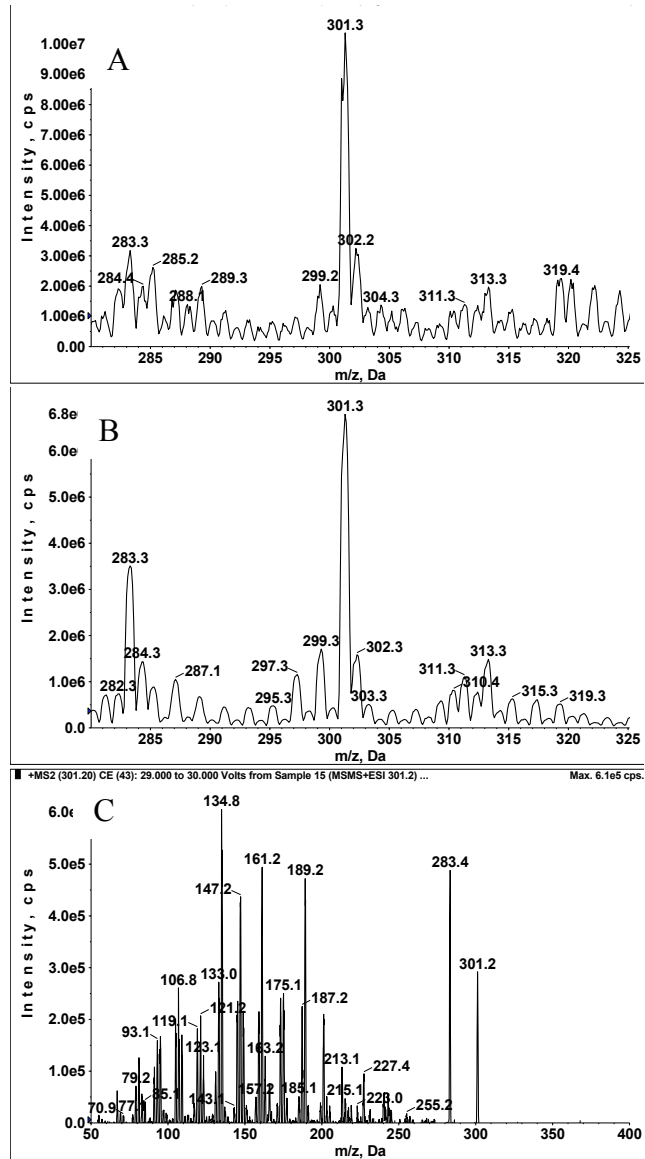


Fig. S1. Allopregnanolone Q1 scan in ESI (A) and APCI (B) mode and ESI product ion scan (C)

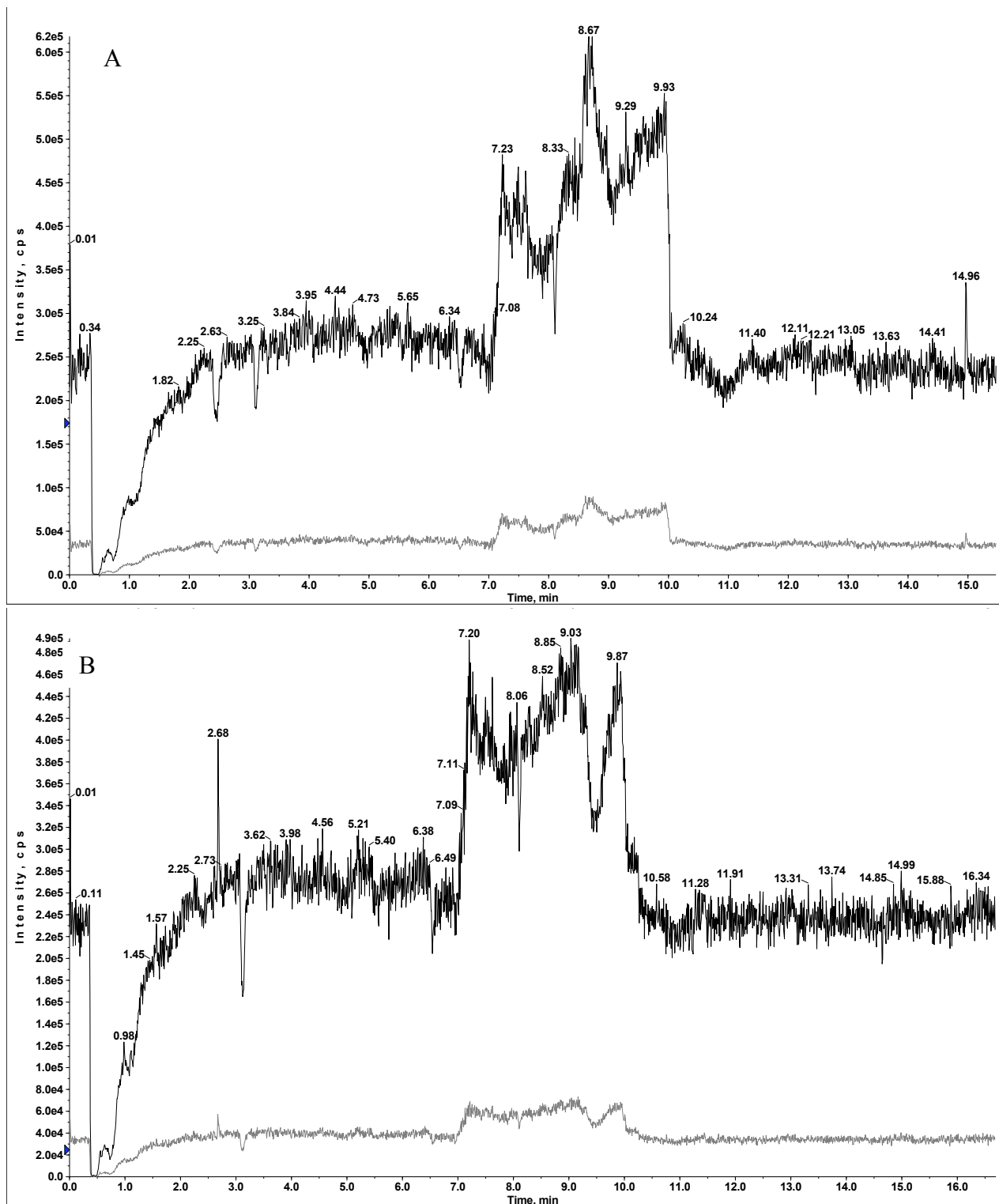


Fig. S2 Ion-suppression test by T-infusion of allopregnanolone and pregnanolone for blank injection (A) and sample (P11) injection (B). MRM transition 433.3→374.4 in black trace and MRM transition 433.3→126.1 in grey trace