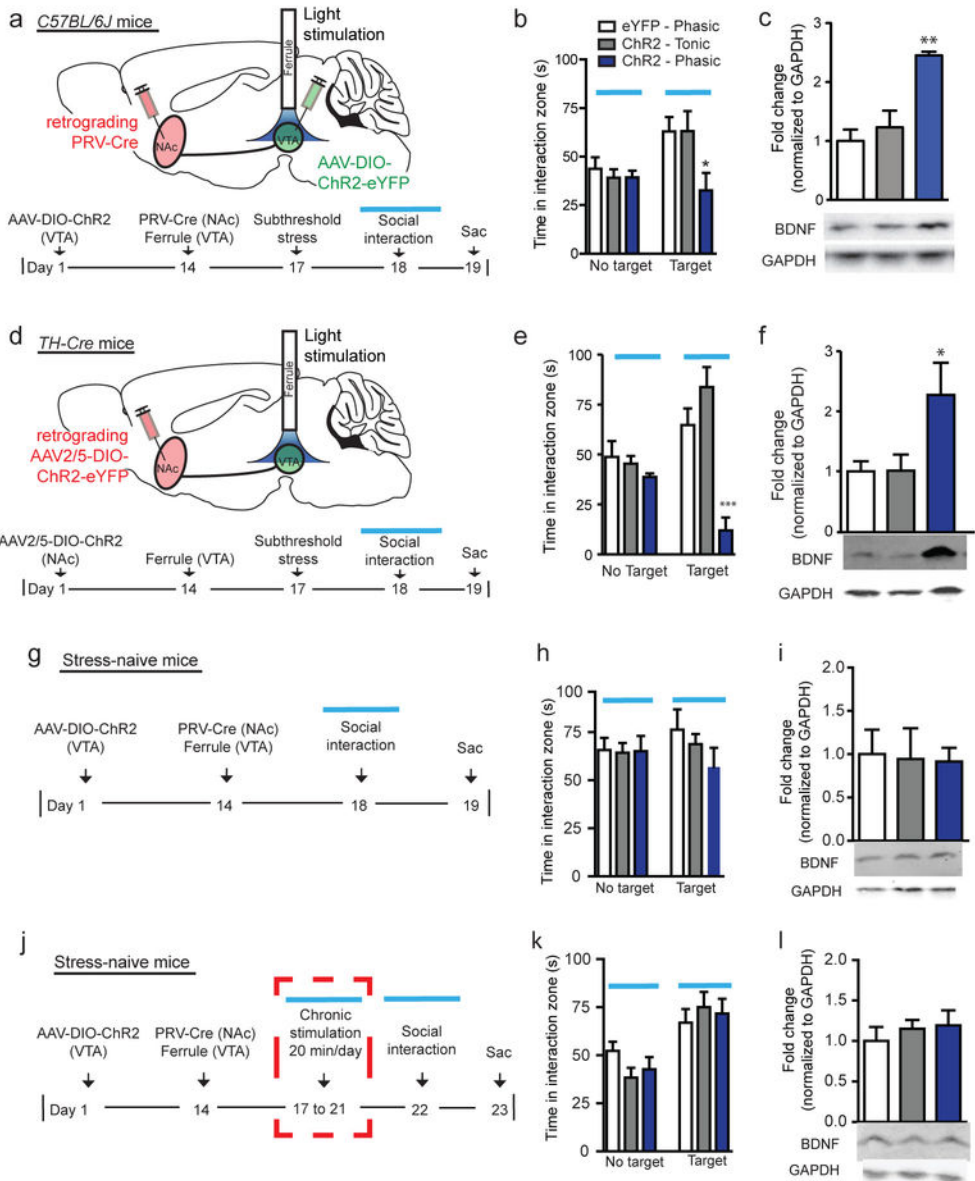
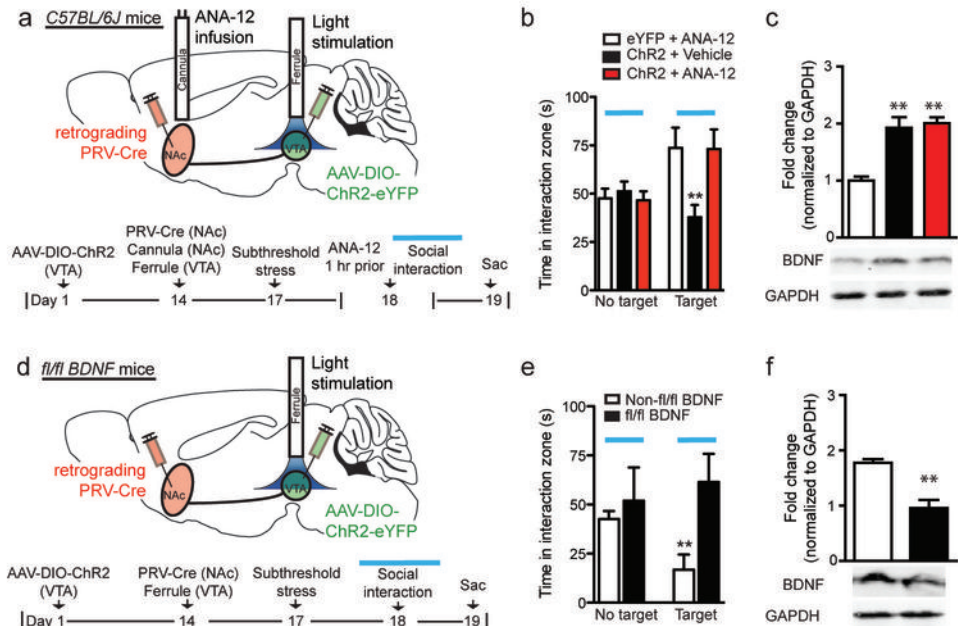


# Figure-1 (Han)

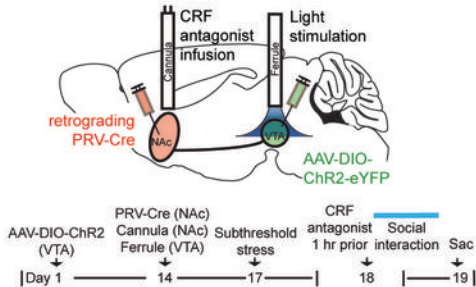


# Figure-2 (Han)

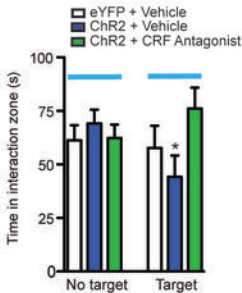


# Figure-3 (Han)

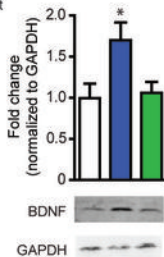
## a C57BL/6J - stressed mice



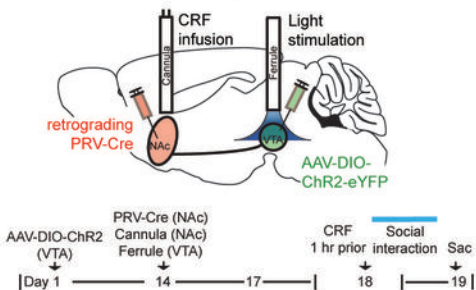
## b



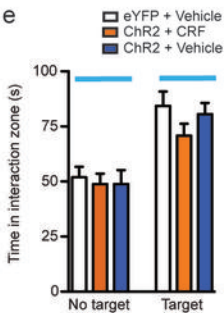
## c



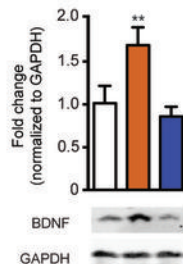
## d C57BL/6J - stress-naive mice



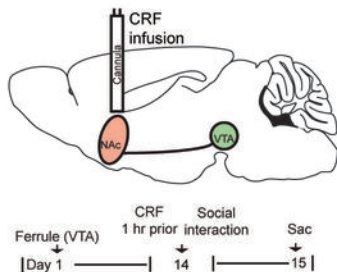
## e



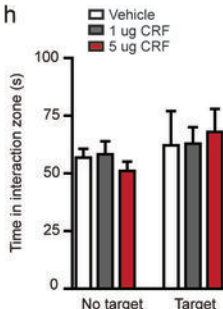
## f



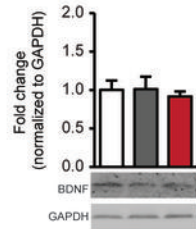
## g C57BL/6J - stress-naive mice



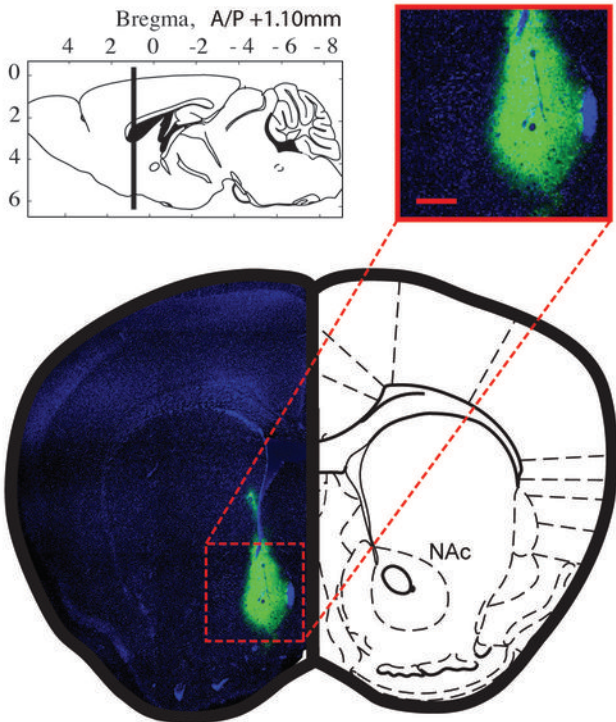
## h



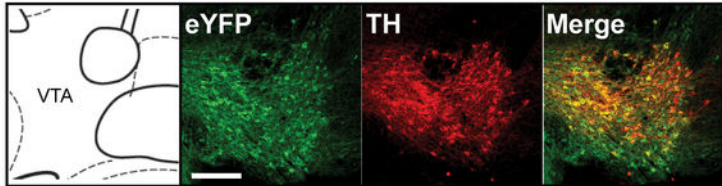
## i



# Supplemental Figure-1 (Han)

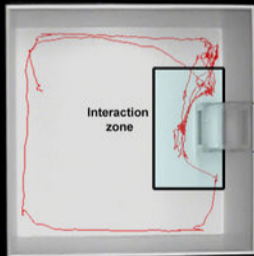


# Supplemental Figure-2 (Han)



# Supplemental Figure-3 (Han)

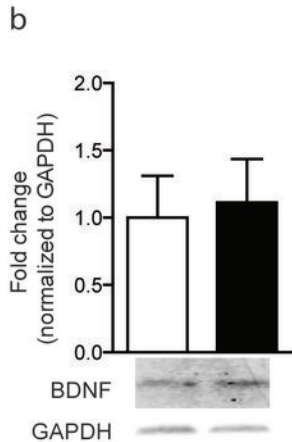
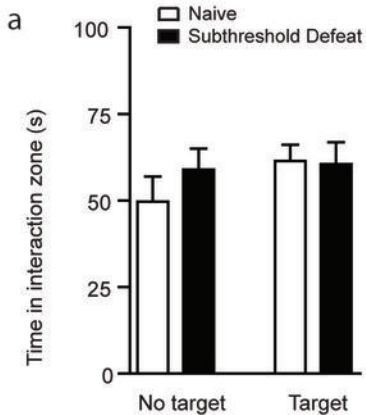
eYFP control



ChR2 phasic

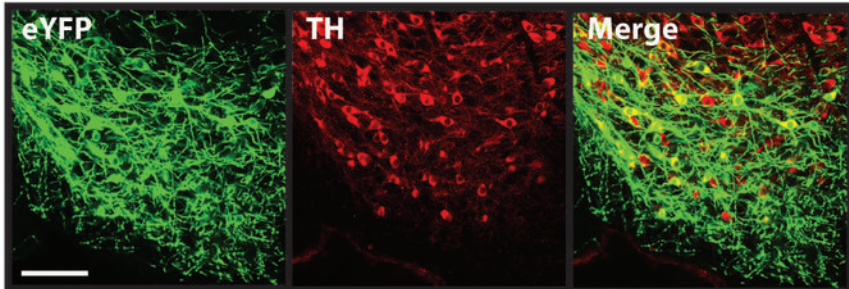


# Supplemental Figure-4 (Han)

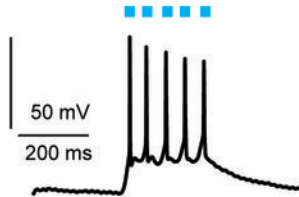


# Supplemental Figure-5 (Han)

a



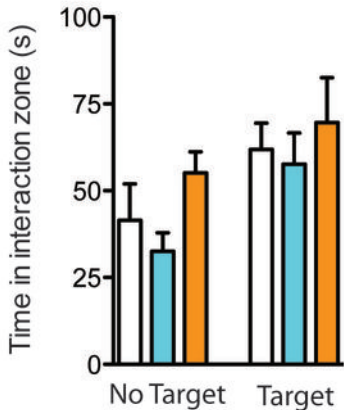
b



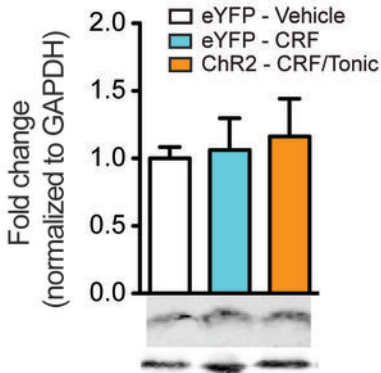


# Supplemental Figure-7 (Han)

a C57BL/6J - stress-naive mice

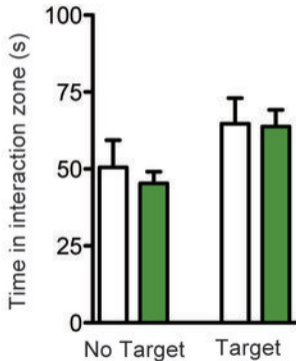


b

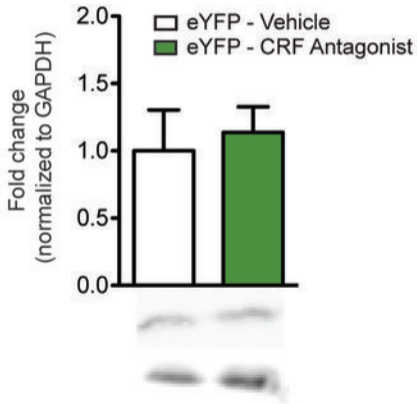


# Supplemental Figure-6 (Han)

a C57BL/6J - stressed mice



b



# Supplemental Figure-8 (Han)

a

Stress Phasic  
(CRF) firing



Gating



BDNF  
up-regulation

b



BDNF



CRF



Dopamine



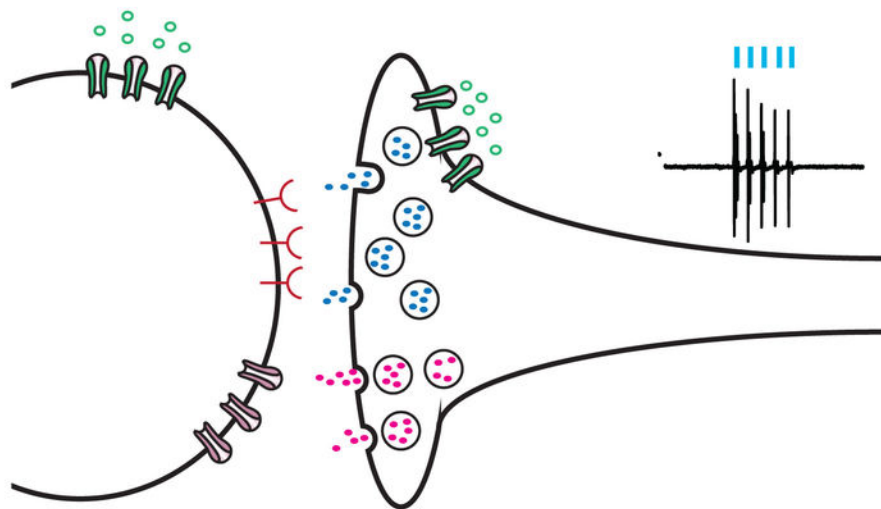
TrkB  
receptor



CRF  
receptor



Dopamine  
receptor



NAc

Medium Spiny Neuron

VTA

Dopamine Neuron