

## Supplementary Material

**Table S1. Demographic, Cognitive, PCL-R, and Substance Use data for N = 72 sample**

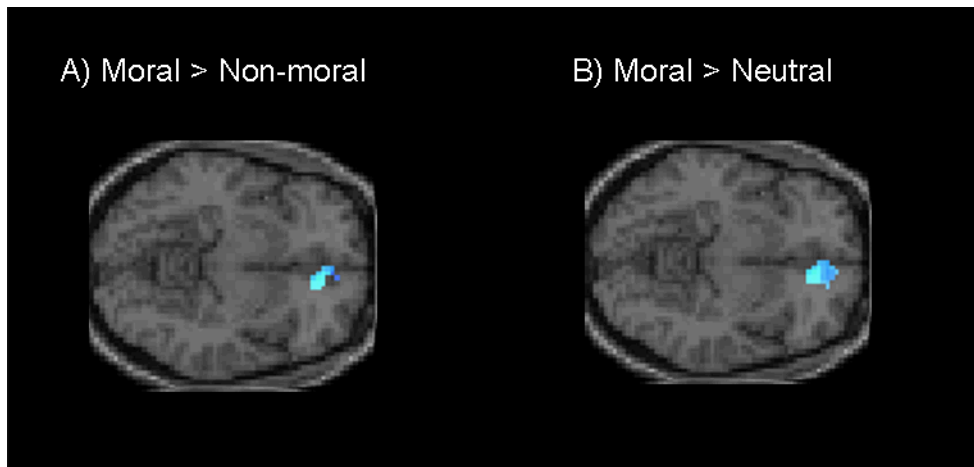
<b>Demographic</b>	<b>Mean (SD)*</b>
Age	32.4 (9.53)
Ethnicity	
<i>Caucasian</i>	N = 29
<i>Non-Caucasian</i>	N = 43
Handedness Score‡	55.3 (47.7)
<b>Cognitive</b>	
IQ	98.5 (14.29)
<b>Psychopathy</b>	
PCL-R Total	19.3 (7.07)
Factor 1	6.2 (3.52)
Factor 2	11.4 (4.07)
<b>Substance Use (Past)§</b>	
<i>Total Years used</i>	
Alcohol	10.4 (9.28)
Cannabis	10.8 (9.08)
Cocaine	3.5 (6.58)
Methamphetamine	2.8 (4.43)
Heroin	0.9 (3.23)
Hallucinogens	1.3 (3.22)

\* Unless otherwise noted.

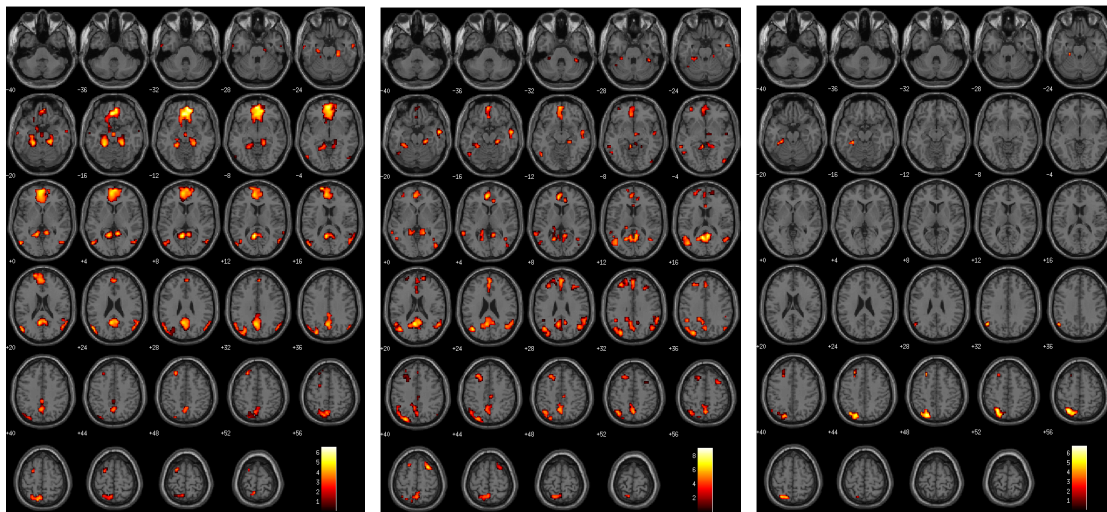
‡ Information was not available for one psychopathic participant.

§ Information was not available for two psychopathic participants.

**Figure S1.** Negative correlation between PCL-R scores and ventromedial prefrontal activity during A) Moral vs. Non-moral picture viewing ( $x = 9, y = 39, z = -12; t = 3.44, p = .035$  FWE corrected) and B) Moral vs. Neutral picture viewing ( $x = 12, y = 39, z = -9; t = 3.36, p = .044$  FWE corrected) in  $N = 72$  participants. For these participants, correlations between PCL-R scores and demographic variables were as follows: Age:  $r = -0.06$ , IQ:  $r = 0.14$ , Handedness:  $r = 0.09$ ; Alcohol use:  $r = -0.03$ , Heroin use:  $r = 0.06$ , Cocaine use:  $r = 0.17$ , Methamphetamine use:  $r = 0.18$ , Cannabis use:  $r = -0.05$ , Hallucinogen use:  $r = 0.15$ . None of these correlations were significant. Regarding race, 85% of our 72 participants were either Caucasian (48%) or Hispanic (52%). These two groups did not significantly differ in PCL-R score ( $p = .82$ ). Because none of these variables were significantly associated with PCL-R scores, we did not include any of them as covariates.



**Figure S2.** fMRI results of moral vs. non-moral picture viewing from non-antisocial/non-incarcerated participants (N = 28, Harenski et al., 2008), and the current sample of nonpsychopaths (N = 16) and psychopaths (N = 16), illustrating the similarity in activation patterns between non-incarcerated participants and nonpsychopaths.

**Non-incarcerated****Nonpsychopaths****Psychopaths**

**Optional Supplementary Material** (can be included at discretion of editor)

**Table S2. Negative correlations between Factor/Facet scores and brain activity in regions of interest**

<b>Contrast</b>	<b>Factor/Facet</b>		<b>MPFC</b>	<b>Amyg (R)</b>	<b>Amyg (L)</b>	<b>ATC (R)</b>	<b>ATC (L)</b>	<b>PTC (R)</b>	<b>PTC (L)</b>	
<i>Moral &gt; Non-moral</i>	Factor 1 (Interpersonal/Affective)	<i>t</i>	---	2.29	2.17	1.7	---	---	2.27	
		<i>p</i>	---	0.32	0.36	0.56	---	---	0.32	
		<i>k</i>	---	42	12	1	---	---	5	
		<i>x,y,z</i>	---	30,-6,-24	-24,-9,-33	60,-6,-12	---	---	-51,-63,24	
	Factor 2 (Impulsive/Antisocial)			3.83	2.14	2.1	2.96	---	2.55	---
				0.01***	0.38	0.39	0.1	---	0.22	---
				26	5	3	25	---	33	---
				9,36,-9	24,-9,-21	-27,-6,-24	57,-9,-18	---	45,-66,33	---
	Facet 1 (Interpersonal)			---	---	---	---	---	---	---
				---	---	---	---	---	---	---
				---	---	---	---	---	---	---
				---	---	---	---	---	---	---
	Facet 2 (Affective)			---	---	2.85	2.84	---	---	---
				---	---	0.13	0.13	---	---	---
				---	---	13	11	---	---	---
				---	---	-18,-12,-30	57,3,-21	---	---	---
Facet 3 (Impulsive)			1.69	2.62	---	---	---	---	---	
			0.56	0.2	---	---	---	---	---	
			1	11	---	---	---	---	---	
			12,51,-6	36,0,-27	---	---	---	---	---	
Facet 4 (Antisocial)			---	2.13	---	---	---	---	---	
			---	0.38	---	---	---	---	---	
			---	3	---	---	---	---	---	
			---	39,-6,-27	---	---	---	---	---	
<i>Moral &gt; Neutral</i>	Factor 1 (Interpersonal/Affective)		---	3.31	1.92	---	---	---	2.01	
			---	0.05***	0.47	---	---	---	0.42	
			---	63	4	---	---	---	12	
			---	33,-6,-24	-27,-3,-21	---	---	---	-48,-63,24	
	Factor 2 (Impulsive/Antisocial)			2.5	---	---	1.7	---	2.05	---
				0.23	---	---	0.54	---	0.4	---
				61	---	---	2	---	8	---
				15, 42, -9	---	---	57,-9,-21	---	45,-66 36	---

	Facet 1 (Interpersonal)	---	---	---	---	---	---	---
		---	---	---	---	---	---	---
		---	---	---	---	---	---	---
		---	---	---	---	---	---	---
	Facet 2 (Affective)	---	---	2.53	---	---	---	---
		---	---	0.22	---	---	---	---
		---	---	5	---	---	---	---
		---	---	-21,6,-24	---	---	---	---
	Facet 3 (Impulsive)	2.34	2.37	1.74	2.34	1.8	2.78	---
		0.28	0.27	0.52	0.28	0.5	0.14	---
		20	15	1	10	2	16	---
		15,51,-6	36,-6,-21	-30,0,-24	57,-9,-24	-60,-9,-21	-51,-63,30	---
	Facet 4 (Antisocial)	---	---	---	---	---	---	---
		---	---	---	---	---	---	---
		---	---	---	---	---	---	---
		---	---	---	---	---	---	---
<i>Parametric modulation</i>	Factor 1 (Interpersonal/Affective)	---	2.43	---	---	---	1.9	---
		---	0.32	---	---	---	0.56	---
		---	10	---	---	---	6	---
		---	33,-15,-24	---	---	---	51,-57,30	---
	Factor 2 (Impulsive/Antisocial)	1.74	2.78	---	---	---	---	---
		0.62	0.19	---	---	---	---	---
		1	6	---	---	---	---	---
		15,42,-3	24,0,-27	---	---	---	---	---
	Facet 1 (Interpersonal)	---	---	---	---	---	---	---
		---	---	---	---	---	---	---
		---	---	---	---	---	---	---
		---	---	---	---	---	---	---
	Facet 2 (Affective)	2.99	3.79	3.25	3.9	2.61	1.93	2.31
		0.12	0.02***	0.07	0.01	0.17	0.53	0.36
		26	62	54	32	15	1	10
		9,48,-3	33,-9,-30	-30,0,-27	63,-9,-18	-54,-18,-24	51,-72,27	-51,-66,30
	Facet 3 (Impulsive)	2.27	2.81	2.46	---	1.7	2.02	---
		0.38	0.17	0.29	---	0.62	0.49	---
		5	50	10	---	1	5	---
		9,42,-9	33,-15,-27	-15,-9,-24	---	-60,-21,-21	48,-69,30	---
	Facet 4 (Antisocial)	2.05	---	---	---	---	---	---
		0.48	---	---	---	---	---	---
		6	---	---	---	---	---	---

15, 42, -3    ---    ---    ---    ---    ---    ---

---

MPFC = medial prefrontal cortex; Amyg = amygdala, ATC = anterior temporal cortex, PTC = posterior temporal cortex. t = t value, p = p value, k = cluster size (voxels). Dashes indicate no activity within ROI.