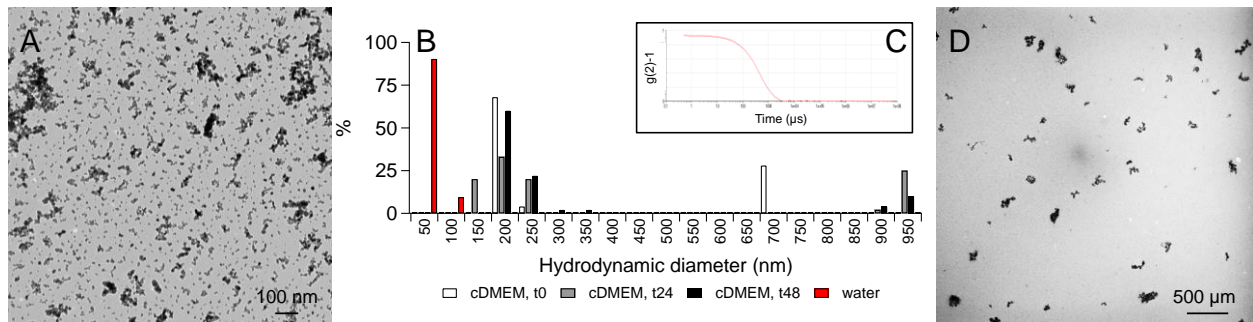


## TEM images and size distribution of TiO<sub>2</sub>-NPs



TEM images and size distribution of TiO<sub>2</sub>-NPs. TEM images were recorded on TiO<sub>2</sub>-NPs in water (A). NP size distribution was evaluated by PCS measurement after sonication in water (“water”) or sonication in water and dilution in cell culture medium containing 10% of SVF (“cDMEM”, for complete DMEM). Size range of NP agglomerates either immediately after dilution (“cDMEM, t<sub>0</sub>”), or 24 h (“cDMEM, t<sub>24</sub>”) or 48 h (“cDMEM, t<sub>48</sub>”) after dilution (B). Typical correlogram recorded during a PCS measurement (C). TEM images of TiO<sub>2</sub>-NP agglomerates 24 h after dilution in exposure medium (D).