

## RESEARCH REPORTS

### Biomaterials and Bioengineering

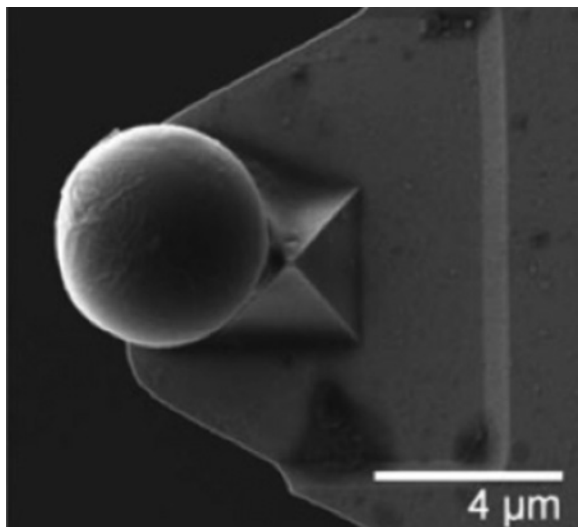
D. Vukosavljevic<sup>1</sup>, J.L. Hutter<sup>2</sup>, E.J. Helmerhorst<sup>3</sup>,  
Y. Xiao<sup>1</sup>, W. Custodio<sup>1</sup>, F.C. Zaidan<sup>1</sup>,  
F.G. Oppenheim<sup>3</sup>, and W.L. Siqueira<sup>1\*</sup>

<sup>1</sup>Schulich School of Medicine & Dentistry, The University of Western Ontario, London, ON N5A 6C1, Canada; <sup>2</sup>Department of Physics & Astronomy, The University of Western Ontario, London, ON N6A 3K7, Canada; and <sup>3</sup>Goldman School of Dental Medicine, Boston University, Boston, MA, USA; \*corresponding author, walter.siqueira@uwo.ca

*J Dent Res* DOI: 10.1177/0022034514526599

# Nanoscale Adhesion Forces between Enamel Pellicle Proteins and Hydroxyapatite

## APPENDIX



**Appendix Figure.** Scanning electron micrograph of a silica microsphere (~5 μm) attached to the atomic force microscopy (AFM) cantilever tip after being used for adhesion measurements. Note: Protein functionalized silica microsphere remained attached to the AFM cantilever even after more than 3,000 force-distance curve acquisitions were carried out.