

Supplementary Material

Isioma I. Enwerem et al. doi: 10.1242/bio.20147443

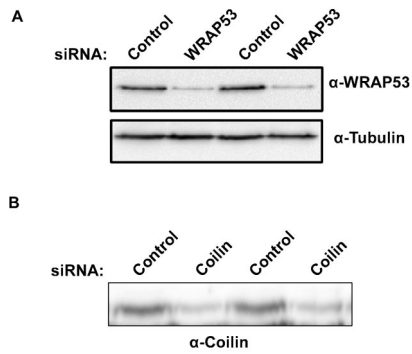


Fig. S1. (A) Cell lysates from knockdowns in Fig. 2A were subjected to SDS-PAGE and Western blot analysis, and the blot probed with α -WRAP53 or α -tubulin antibodies. (B) Cell lysates from the experiment in Fig. 2B were subjected to SDS-PAGE and Western blot analysis, and blot probed with α -coilin antibody.

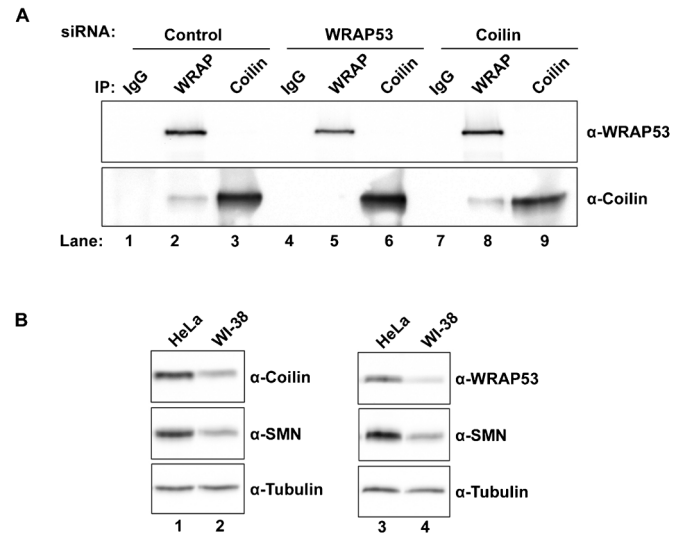


Fig. S2. (A) The IP beads used in Fig. 7 were subjected to SDS-PAGE and Western blot analysis, and the blots probed with α -WRAP53 or α -coilin antibodies. (B) Comparison of coilin, WRAP53 and SMN levels in HeLa and WI-38 cells. Equal amounts of total protein from HeLa and WI-38 cells were subjected to SDS-PAGE and Western blot analysis with the indicated antibody. Blots were probed with anti-tubulin as a loading control.