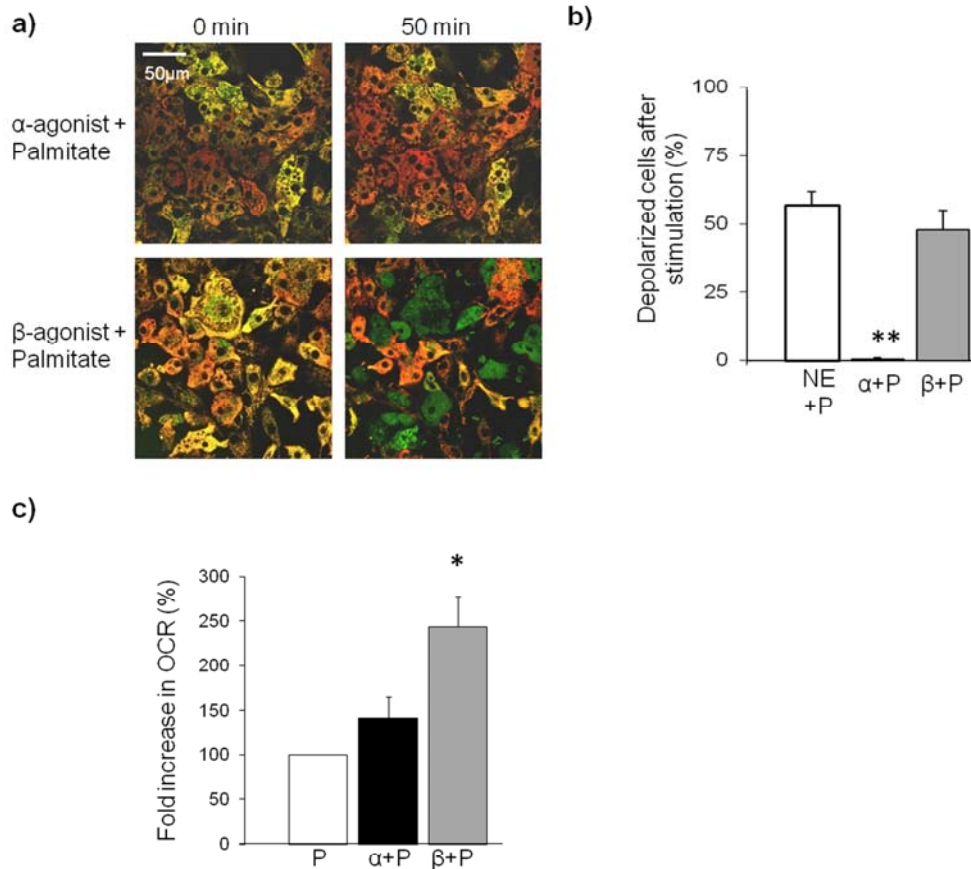


Figure 5s



Supplementary Figure 5. Synergistic effect on $\Delta\psi_m$ depolarization is mediated through β -adrenergic pathway.

A) Images of multiple cells stained with TMRE/MTG and imaged 50 min after stimulation as indicated (only merged images are shown). Alpha-agonist = cirazoline (selective α_1 agonist); Beta-agonist = CL-316243 (selective β_3 agonist). Cells that depolarize lose red TMRE staining and become green. Scale bar 50 μ m.

B) Quantification of the fraction of cells that undergo $\Delta\psi_m$ depolarization in response to stimuli as indicated. n=24 (NE + palmitate), n=10 (cirazoline + palmitate [α +P]), n=10 (CL-316243 + palmitate [β +P]). ** p<0.01. C) Synergistic increase in oxygen consumption by FFA plus NE involves the β -adrenergic pathway. Measurements of basal oxygen consumption rates were followed by measurements under palmitate +/- CL-316243 or cirazoline. Note that data are normalized to Palmitate. N=4 (cirazoline [α +P]), n=3 (CL-316243 [β +P]). * p<0.05.