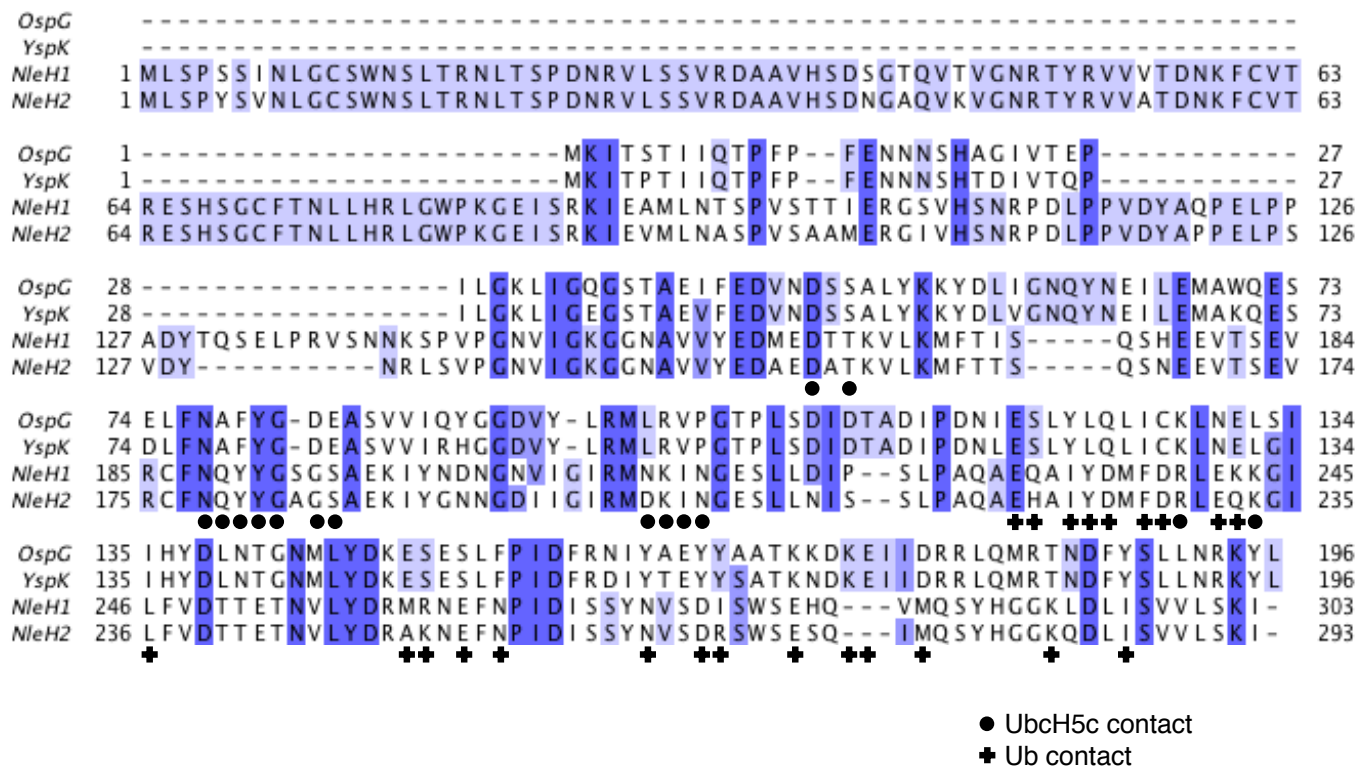
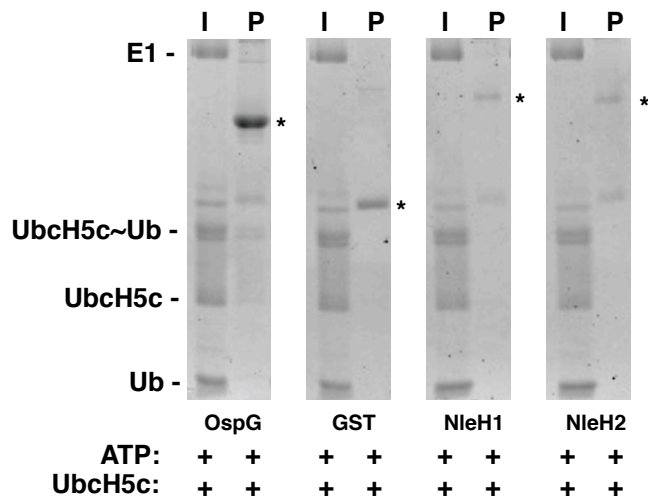


Supplemental Figure 5: Sequence and activity comparison of OspG and related effector orthologs

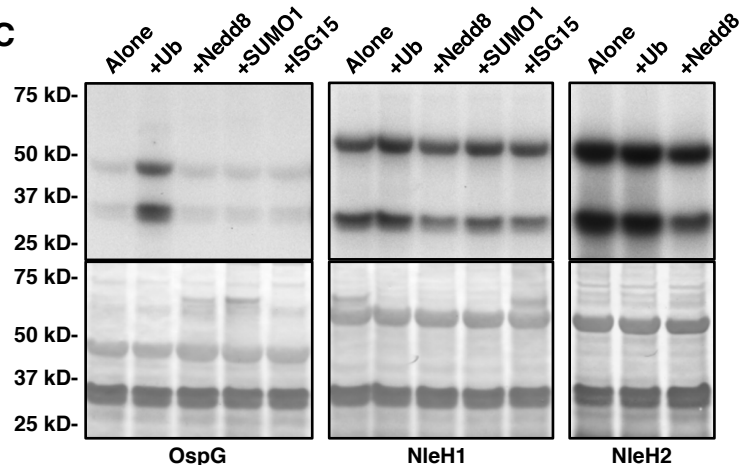
A



B



C



Supplemental Figure 5: Sequence comparison between OspG and related effector orthologs.

a) Sequence alignment between OspG and the related effector kinases YspK (*Yersinia pestis*), NleH1, and NleH2 (*EHEC Escherichia coli*). Sequences are colored by conservation. Residues involved in the UbcH5c- and Ub-interfaces on OspG are indicated. **b)** Nonreducing pulldowns of UbcH5c~Ub using GST-OspG, GST, GST-NleH1, or GST-NleH2. GST-tagged proteins are indicated by asterisks. **c)** γ ³²P-ATP kinase assay measuring OspG, NleH1, and NleH2 activities against the kinase itself and Histone H1 in response to added Ub or Ubl proteins. Upper: ³²P-autoradiography. Lower: India ink stain for total protein.