

Figure S4 relates to Figure 4

Supplementary Figure 4

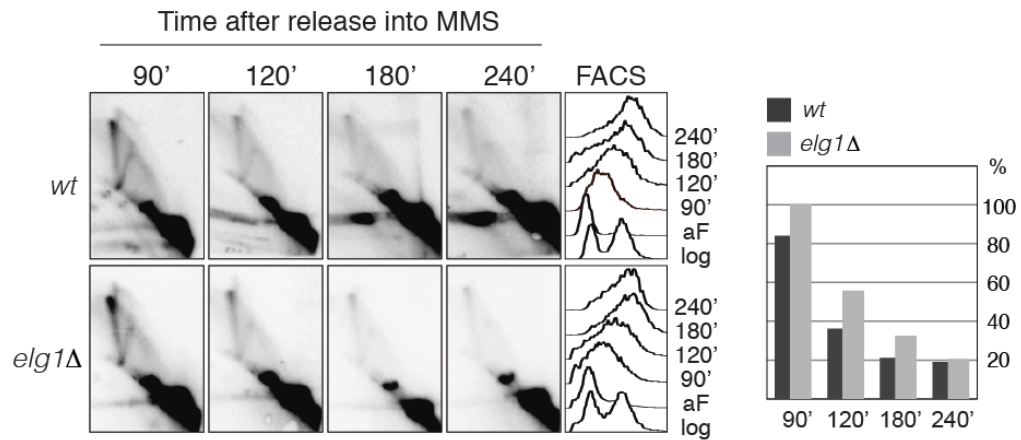


Figure S4. Null *ELG1* mutation does not reduce the amount of SCJs generated during template switching. *wt* (FY1000) and *elg1* (HY2003) cells were synchronized with alpha-factor (aF) and released into YPD media containing 0.033% MMS. At the indicated time-points samples were taken for 2D gel and FACS analysis. During quantification the highest value obtained for the X-molecules accumulating was considered as 100%.