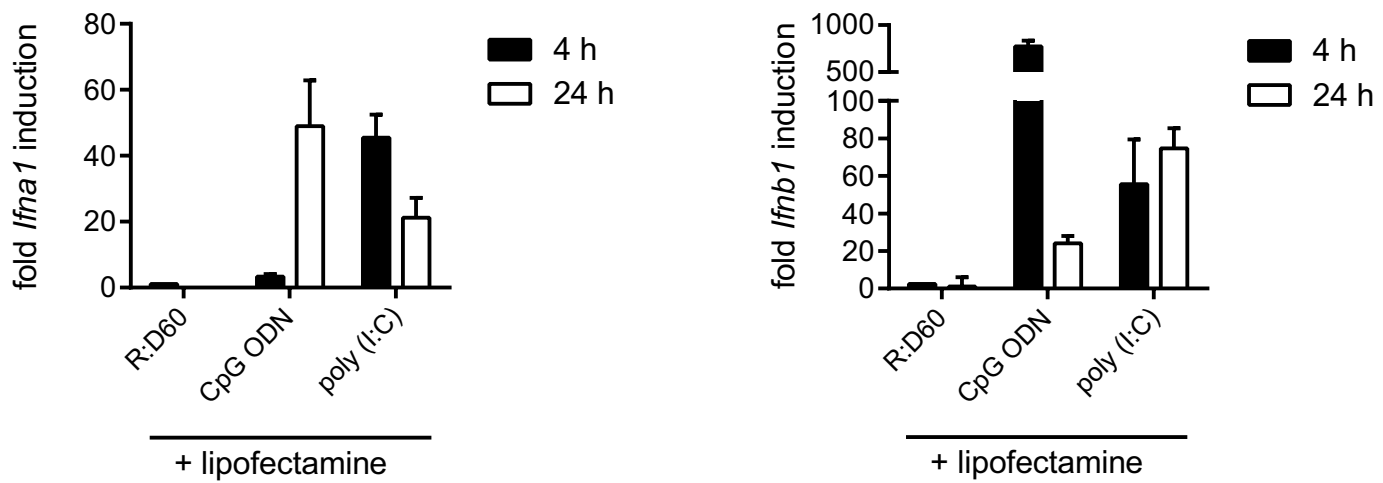


Figure S1

A Primary MEFs



B BMDMs

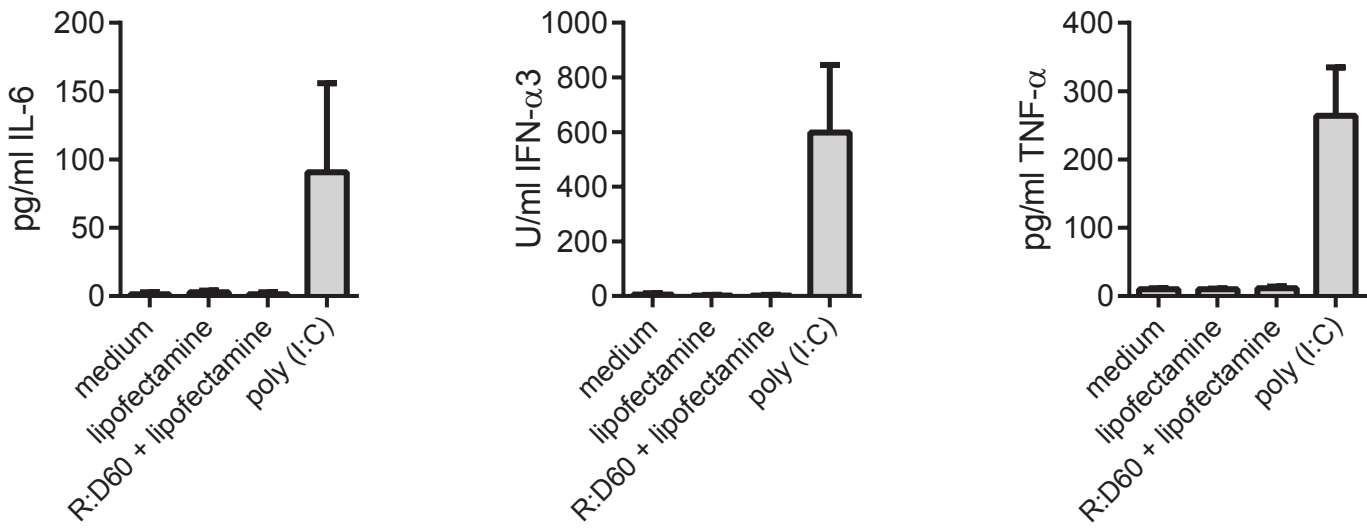


Figure S1. RNA:DNA hybrids do not induce cytokine production in primary MEFs or BMDMs

(A) Type I IFN gene expression in early passage (< 3 passages) primary murine embryonic fibroblasts (MEFs) transfected with 25 µg/ml R:D60, 5 µg/ml CpG ODN (ODN1585) or 25 µg/ml poly (I:C) using Lipofectamine 2000 was measured by qRT-PCR at the time points indicated post-transfection. Data are shown as normalised fold change relative to Lipofectamine alone, representative of three independent experiments + s.d. of n=3 replicates.

(B) Bone marrow derived macrophages (BMDMs) derived by culturing bone marrow from C57BL/6 mice in the presence of M-CSF were transfected with 1 µg/ml R:D60 complexed with Lipofectamine LTX or a control stimulated by the addition of 1 µg/ml poly (I:C) to the culture medium. Supernatant levels of the cytokines IL-6, IFN- α and TNF- α were quantified 18 h later by ELISA. Data shown are the mean of at least three independent experiments + s.e.m.