

Figure S4

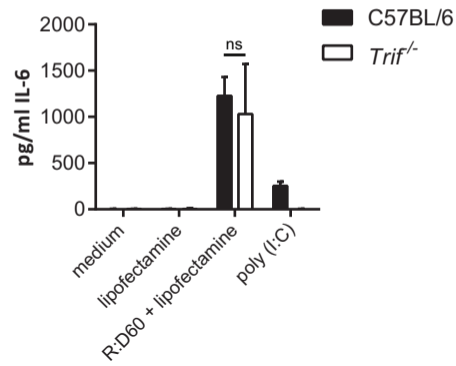
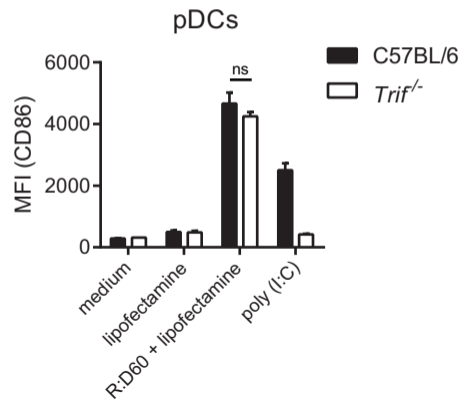
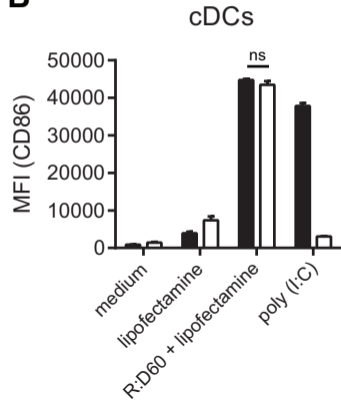
A**B**

Figure S4. Signalling via the adaptor molecule TRIF is not required for the cytokine response to RNA:DNA hybrids in FLDCs

FLDCs derived from *Trif*^{-/-} and C57BL/6 control mice were transfected with 1 µg/ml R:D60 complexed to Lipofectamine LTX or stimulated by the addition of 1 µg/ml poly (I:C) to the culture medium. Levels of supernatant IL-6 (**A**) and expression of CD40/CD80/CD86 (**B**) were quantified 18 h later. Data are representative of two independent experiments \pm s.e.m. of triplicate samples. ns, not significant (unpaired t test).