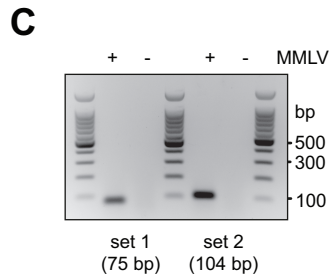
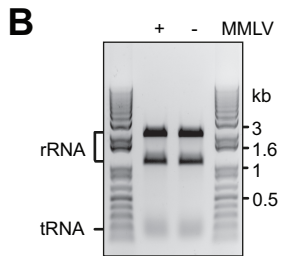
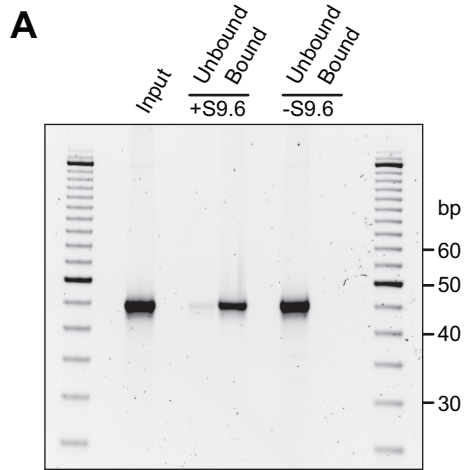


Figure S6



***Figure S6. S9.6 pulls down synthetic and viral RNA:DNA hybrids***

**(A)** S9.6 efficiently immunoprecipitates a synthetic RNA:DNA hybrid. Nearly all of 10 pmol R:D45 hybrid input is pulled down by the S9.6 antibody, whereas all hybrid is present in the unbound fraction when S9.6 is omitted in a 'beads only' control. **(B)** Total nucleic acids were isolated from B3T3 cells infected with MMLV (+) and non-infected (-), and their integrity tested by agarose gel electrophoresis showing intact rRNA and tRNA. **(C)** Both MMLV PCR primer sets specifically detect MMLV in the cytoplasmic nucleic acid fraction from infected and but not from uninfected cells