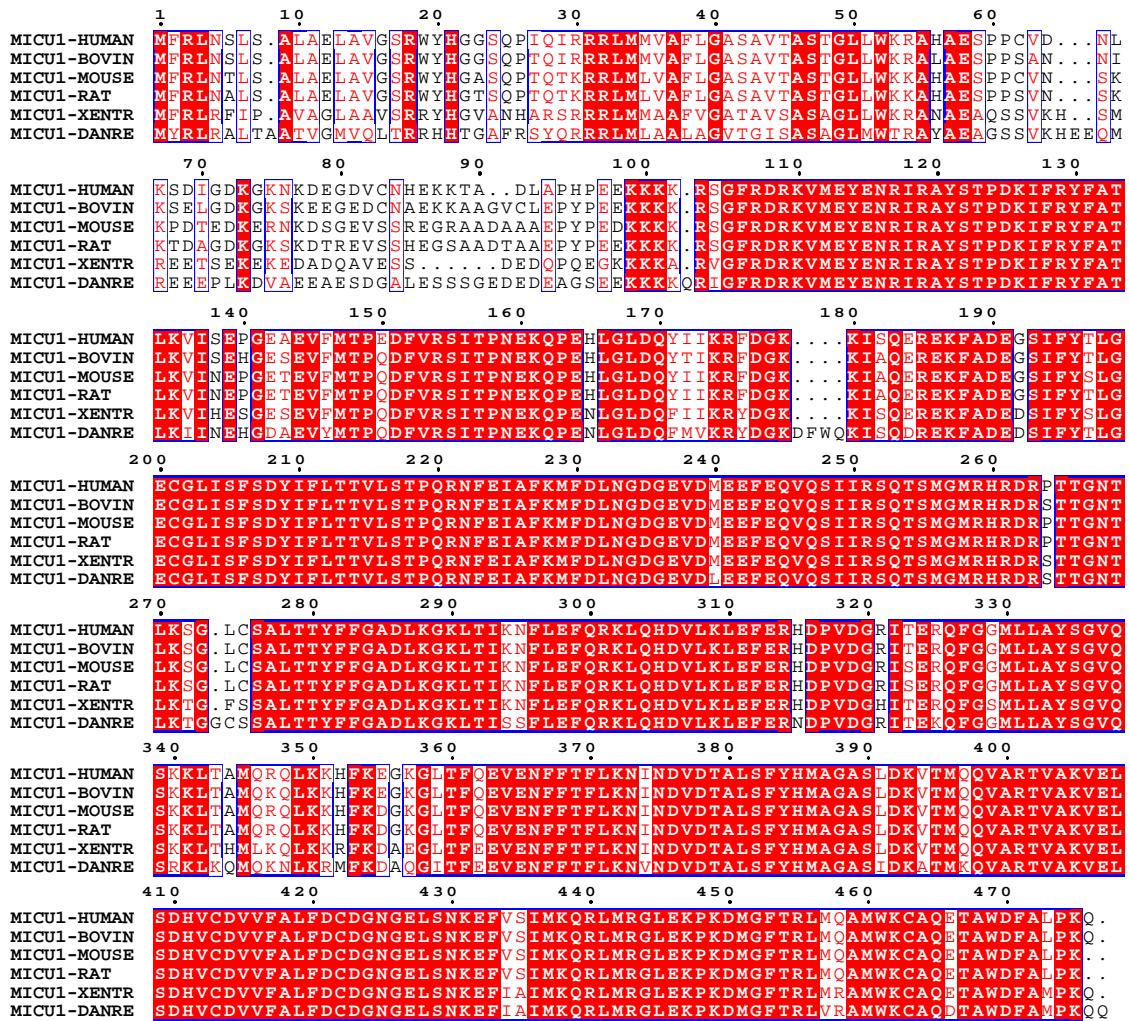


Supplemental Figure 1



Sequence alignment of MICU1 from *Homo sapiens*, *Bos taurus*, *Mus musculus*, *Rattus norvegicus*, *Xenopus tropicalis* and *Danio rerio*. Residues that are conserved in the all species are highlighted by red boxes; residues that are conserved in all but one or two species are shown in red. The residue numbers shown in black are based on the human MICU1 sequence.