

Supplementary Figure 2.

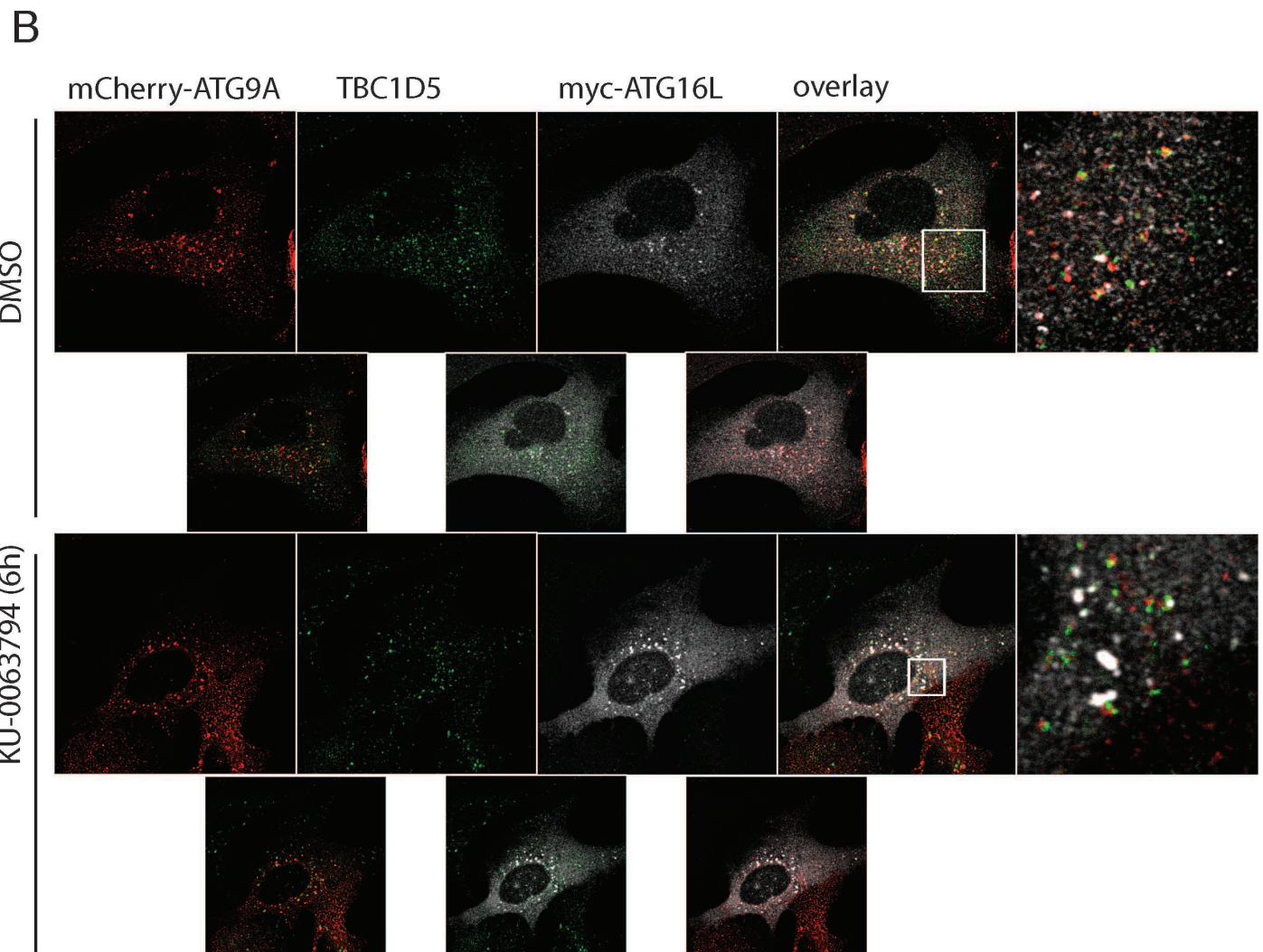
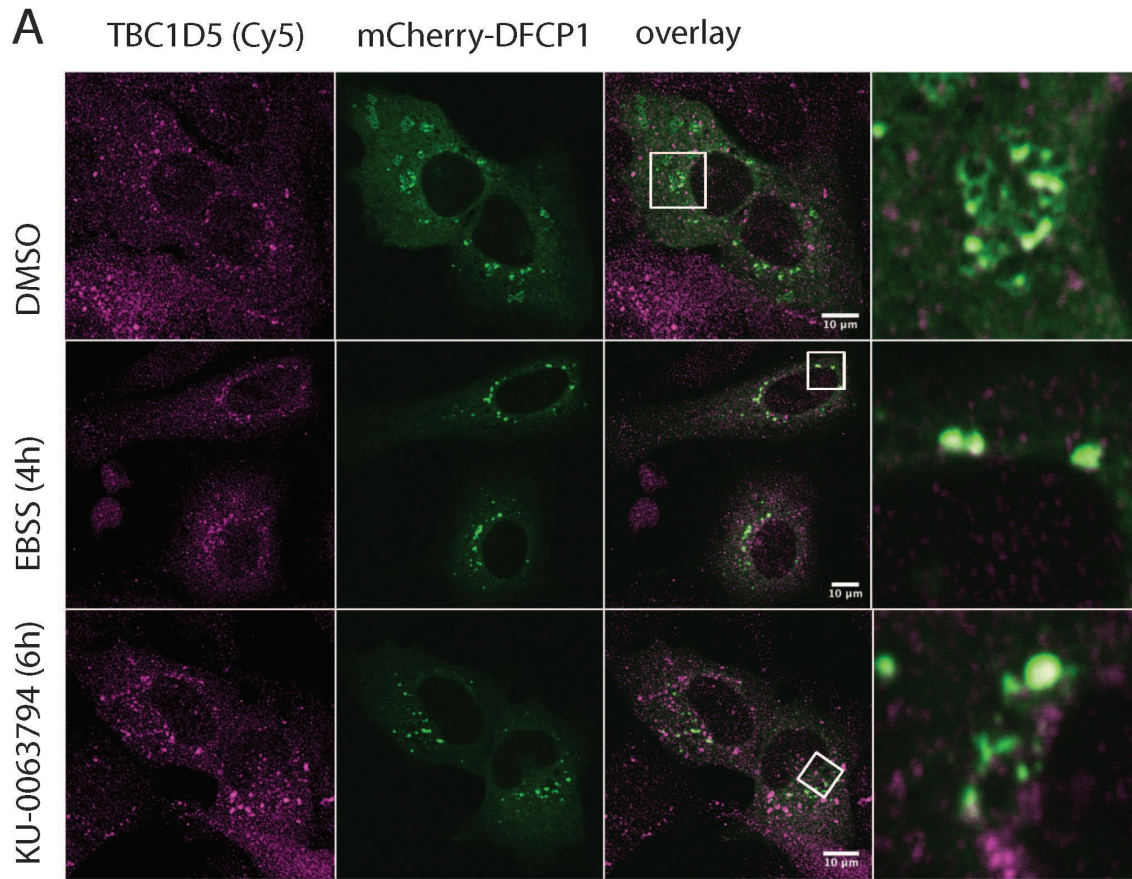


Fig S2 | TBC1D5 is localized specifically on ATG9 positive vesicles during autophagy. (A) U2OS cells were transiently transfected with mCherry tagged DFCP1, and 16 hours post-transfection subjected to starvation (EBSS) for 4h or treated with KU0063794 for 6h. Subsequently, cells were fixed and immune-labeled with anti-TBC1D5 antibody. Partial co-localization of TBC1D5 and DFCP1 was observed in magnified regions (B) U2OS cells stably expressing mCherry-ATG9 were transiently transfected with myc-ATG16L and 16 hours post-transfection treated with KU0063794 for 6h, fixed and immune-labeled with anti-TBC1D5 and anti-myc antibody. Magnified regions show TBC1D5 co-localization with ATG9 vesicles, which are negative for myc-ATG16 staining.