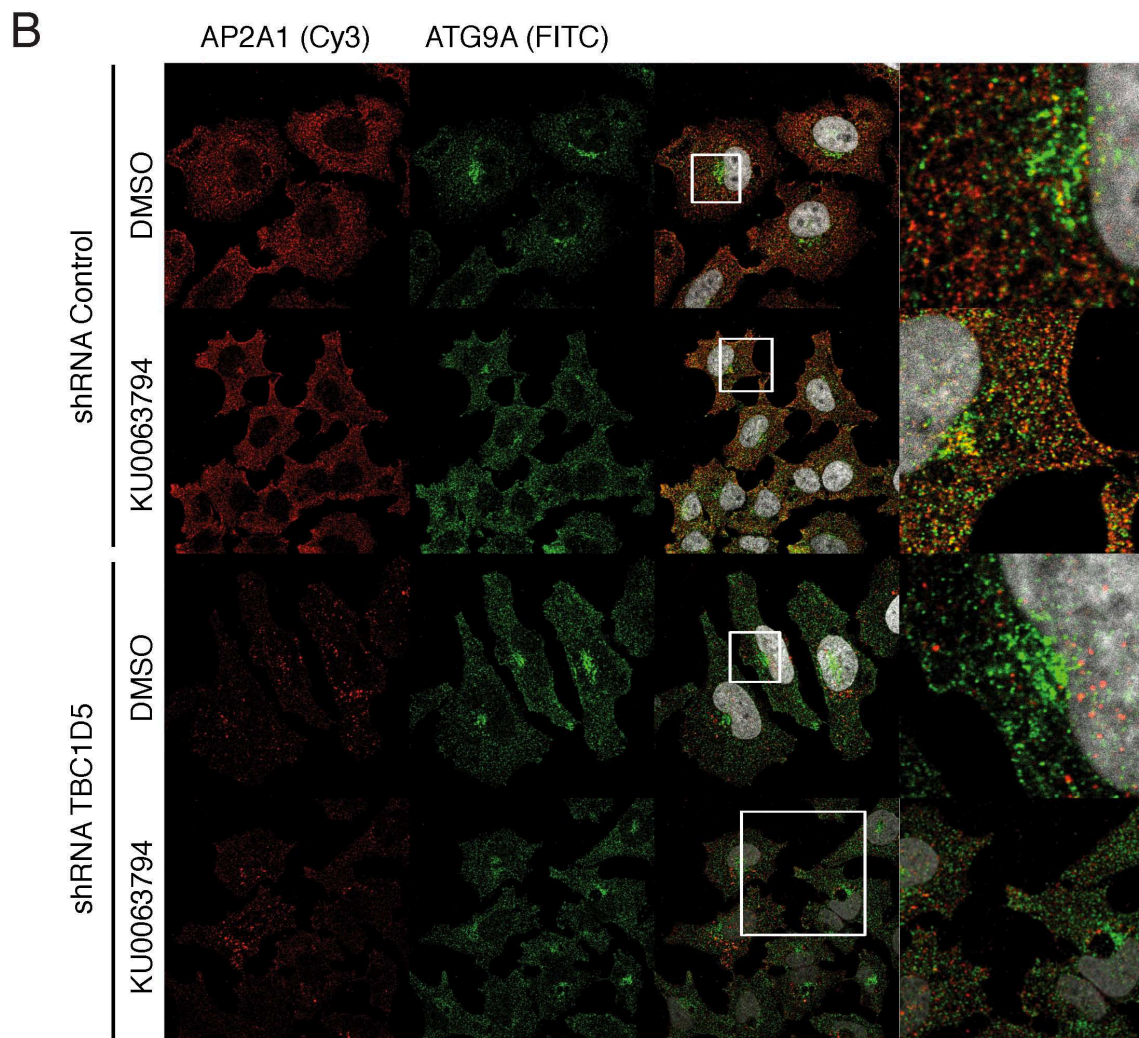
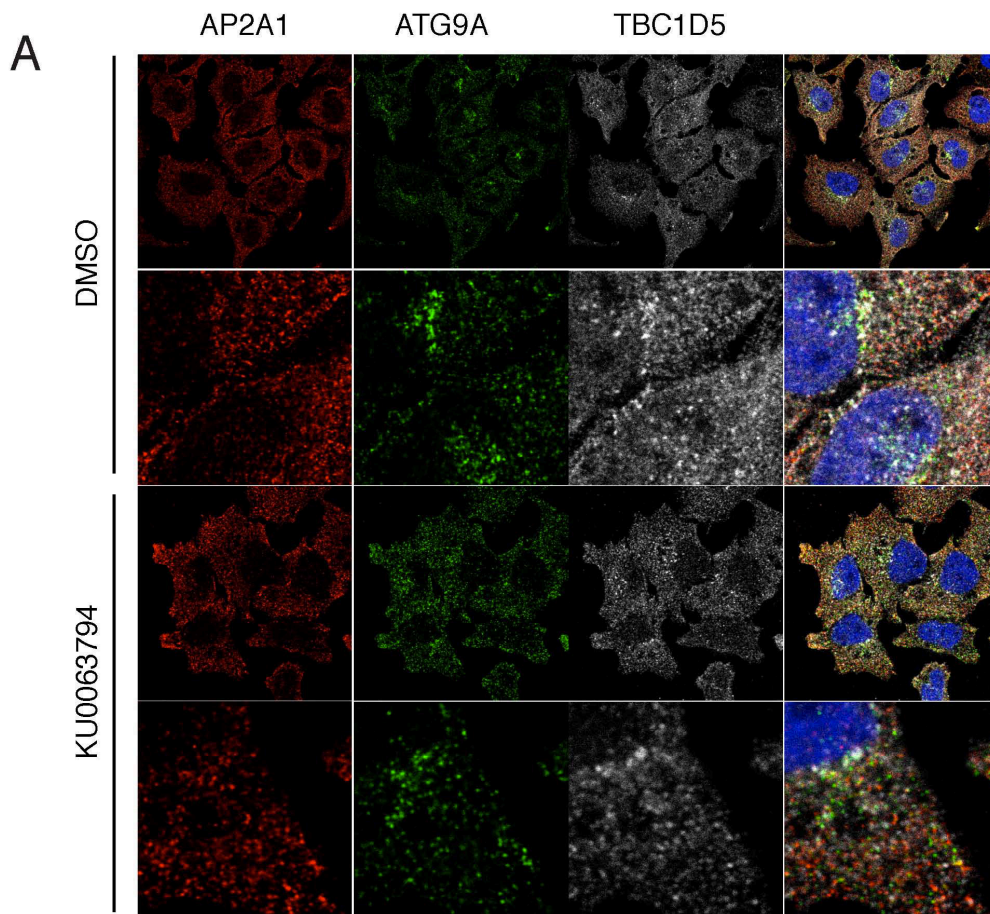


# Supplementary figure 6.



**Fig S6 | TBC1D5, ATG9 and AP2 co-localize during autophagy** (A) HeLa cells were treated with DMSO or KU0063794 for 6h. Subsequently, cells were fixed and immune-labeled with anti-TBC1D5, anti- ATG9 and anti-AP2A1 antibody. (B) Control HeLa cells or TBC1D5 deficient cells were treated with DMSO or KU0063794 for 6h. Subsequently, cells were fixed and immune-labeled with anti- anti- ATG9 and anti-AP2A1 antibody. Magnified regions show that ATG9 co-localizes with AP2, while co-localization is disturbed upon silencing of TBC1D5.