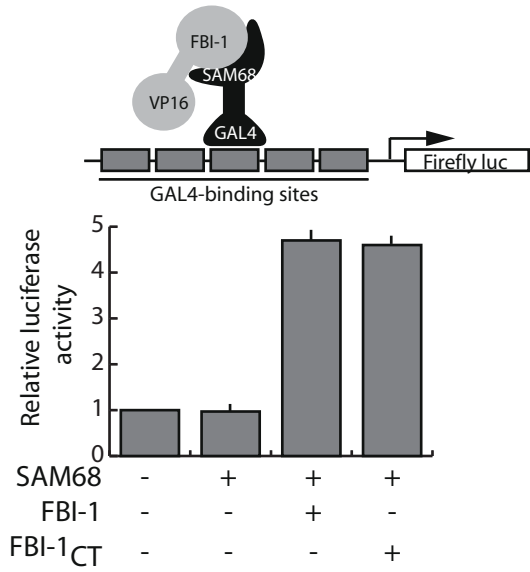
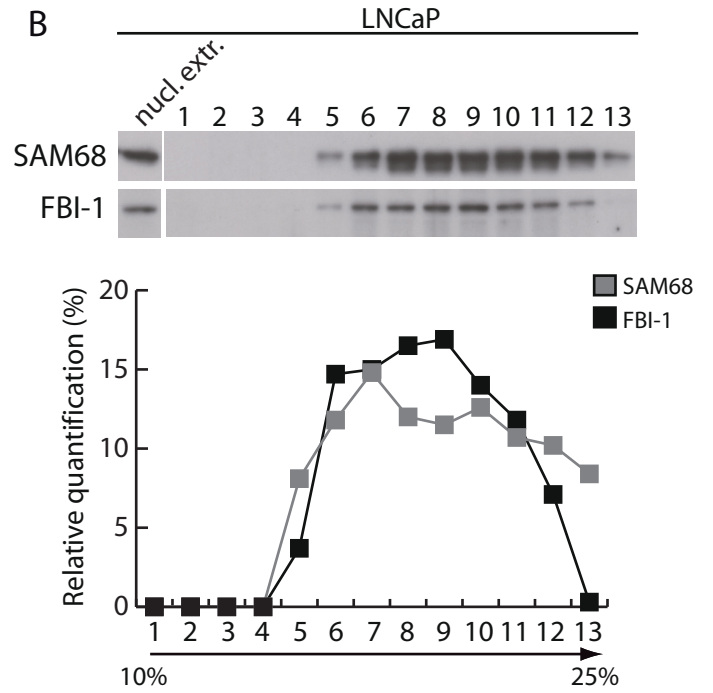


Bielli_Supplemental Figure 1

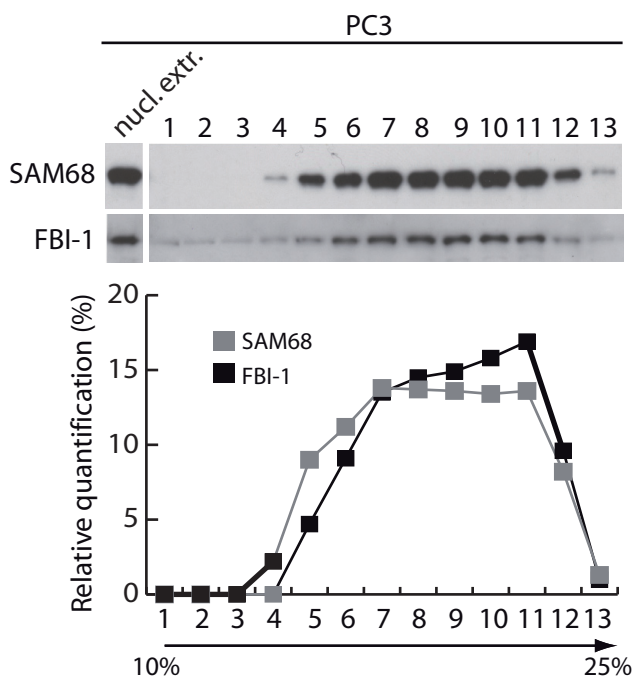
A



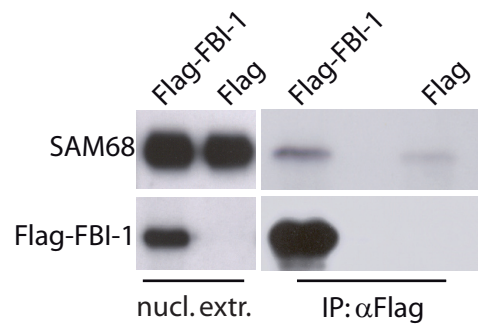
B



C



D



Supplemental Figure 1. FBI-1 is a novel SAM68 interacting protein. A) Two-hybrid mammalian analysis (*upper panel*) of the interaction between SAM68 and FBI-1 or its C-terminal domain (aa 274 to 584; FBI-1_{CT}). HEK293T cells were co-transfected with pBIND-Gal4-SAM68 and pACT-VP16-FBI-1 or -FBI-1_{CT} plasmids, in the presence of the pG5luc vector. The bar graph represents the ratio between firefly and renilla luciferase activity [mean \pm standard deviation (SD), n=3]. B-C) Western blot analyses of sucrose gradient fractionation of nuclear extracts from LNCaP cells (B) or PC3 cells (C) using anti-SAM68 and anti-FBI-1 antibodies. Fraction 1 represents the bottom of the gradient. D) Western blot analysis of endogenous SAM68 and Flag-FBI-1 immunoprecipitated using anti-Flag from nuclear extracts of HEK293T expressing Flag-FBI-1 or empty vector (Flag).