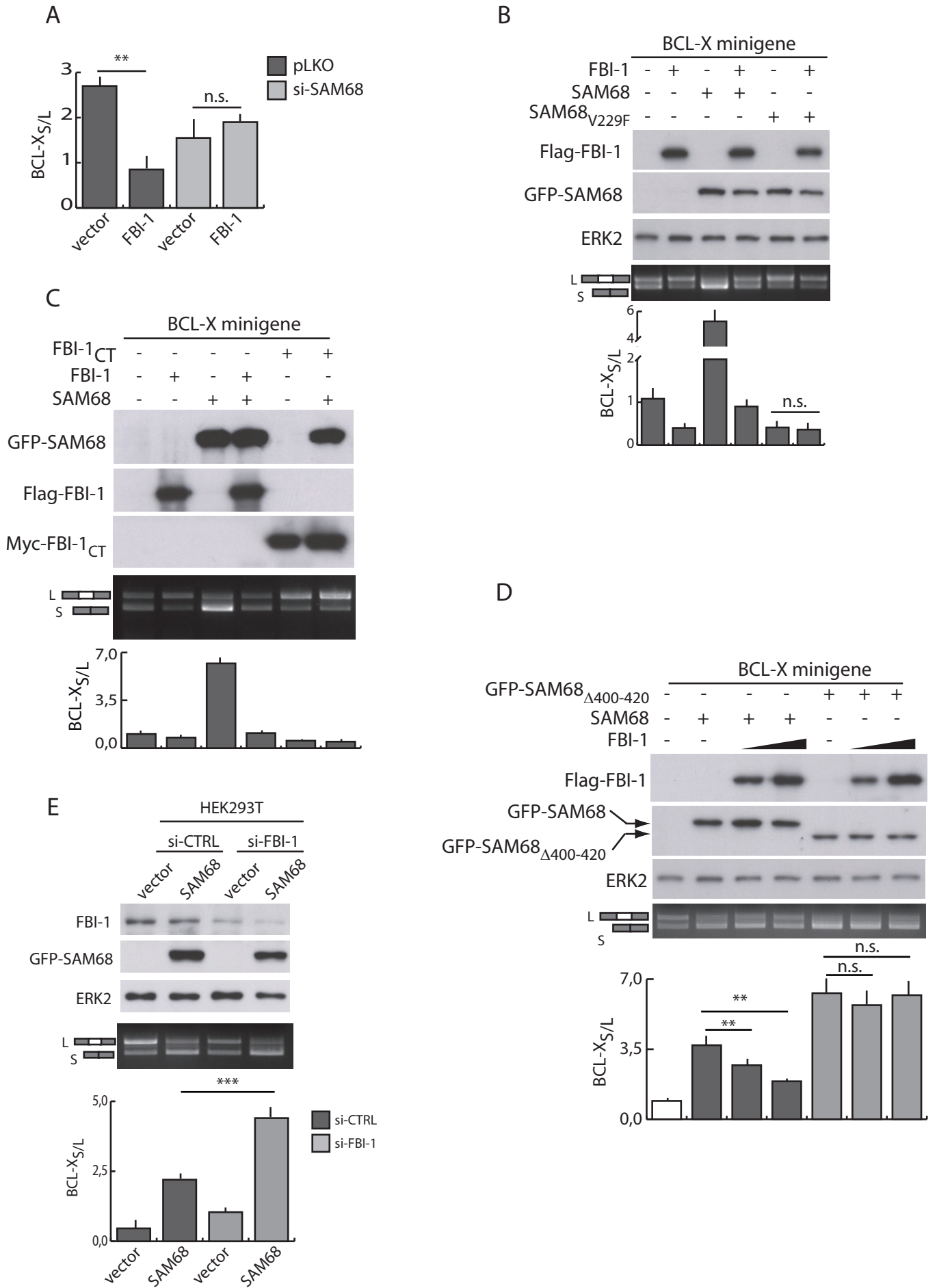


Bielli\_Supplemental Figure 4



**Supplemental Figure 4. FBI-1-mediated *BCL-X* splicing requires SAM68 and affects its pro-**

**apoptotic activity.** A) Analysis of *in vivo* splicing assay of *BCL-X* minigene in PC3 cells stably transfected with control (PLKO) or SAM68 (PLKO si-SAM68) siRNA and transiently transfected with Flag-FBI-1 or the relative empty vector. The bar graph shows the  $BCL-X_S/BCL-X_L$  ratio (mean  $\pm$  SD, n=3). B) Analysis of *in vivo* splicing assay of *BCL-X* minigene performed in HEK293T cells transfected with GFP-SAM68 and GFP-SAM68<sub>V229F</sub> with or without Flag-FBI-1. C) Analysis of *in vivo* splicing assay of *BCL-X* minigene in HEK293T cells transfected with GFP-SAM68 and Flag-FBI-1 (FBI-1) or Myc-FBI-1<sub>CT</sub> (FBI-1<sub>CT</sub>). D) Analysis of *in vivo* splicing assay of *BCL-X* minigene in HEK293T transfected with GFP-SAM68 or GFP-SAM68 $_{\Delta 400-420}$  in the presence of increasing amounts of Flag-FBI-1. E) Analysis of *in vivo* splicing assay of *BCL-X* minigene in HEK293T cells transfected with either scrambled (si-CTRL) or FBI-1 (si-FBI) siRNAs in presence of GFP-SAM68. B-E) Western blot (*upper panel*), agarose gels of the RT-PCR analyses (*middle panel*), and bar graphs (*bottom panel*) of the  $BCL-X_S/BCL-X_L$  ratio (mean  $\pm$  SD, n=3) are shown. A,C,D,E) The p values of Student's t-test are reported. \*\*, p<0.01; \*\*\*, p<0.001; n.s., not significant.