

Supplementary Figures

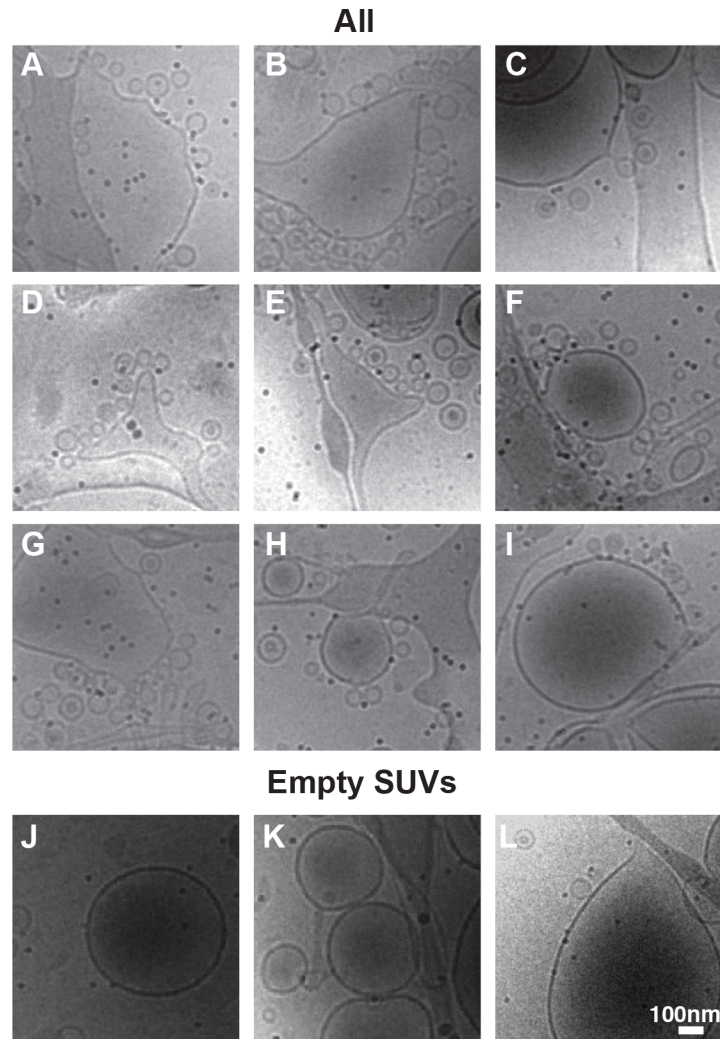


Figure S1. Examples of low-magnification overview cryoEM images used to assess the fraction of SUVs proximal to GUVs.

(A-I) A large fraction (68.4%) of SUVs were in close proximity to GUVs in the sample containing all proteins. (J-L) A much lower fraction of SUVs were close to GUVs (21.3%) in the control sample. These SUVs contain no proteins (neither synaptotagmin 1 nor VAMP2).