

Figure S1

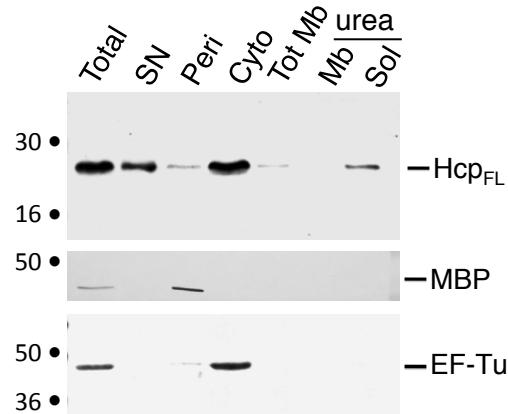


Figure S1. Hcp accumulates in the cytoplasm of EAEc cells.

Total Δhcp cells producing FLAG-tagged Hcp (Total) were separated from the supernatant fraction (SN) and fractionated into periplasmic (Peri), cytoplasmic (Cyto) and membrane (Tot Mb) fractions. The membrane fraction was treated with urea to separate soluble (Sol, peripherally-associated proteins and aggregates) and insoluble (Mb, integral membrane proteins) fractions. Proteins from 2×10^8 cells were loaded on a denaturing 12.5%-acrylamide gel, transferred on nitrocellulose and Hcp (Hcp_{FL}), the periplasmic maltose-binding protein (MBP) and the cytoplasmic elongation factor Tu (EfTu) were detected using specific anti-FLAG, anti-MBP and anti-EF-Tu antibodies respectively. Immunodetected proteins are indicated on the right. Molecular weight markers (in kDa) are indicated on the left.