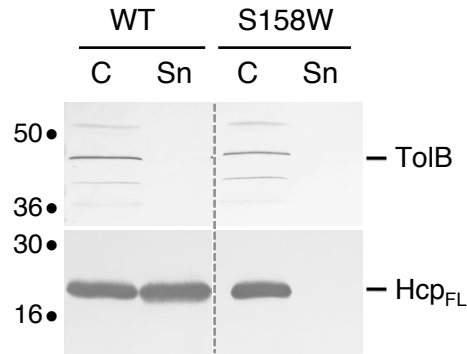


## Figure S4



### Figure S4. *In vivo* Hcp S158W variant release.

Release of the Hcp S158W variant was assessed by separating whole cells (C) and supernatant (Sn) fractions from  $\Delta hcp$  cells producing the WT or S158W Hcp1 protein.  $2 \times 10^8$  cells and the TCA-precipitated material of the supernatant from  $5 \times 10^8$  cells were subjected to 12.5%-acrylamide SDS-PAGE and immunodetection using the anti-TolB polyclonal and the anti-FLAG monoclonal antibodies. The proteins are indicated on the right. The molecular weight markers (in kDa) are indicated on the left.