

SUPPLEMENTARY MOVIE LEGENDS

Movie 1. Real time observation of AV enlargement during histamine stimulation in GFP-PLC₁δ-PH transfected gastric parietal cell. Histamine (100 μM) was added at the start of the experiment. Images were recorded every minute for 30 min. Cell in this movie is also shown in Fig. 3A

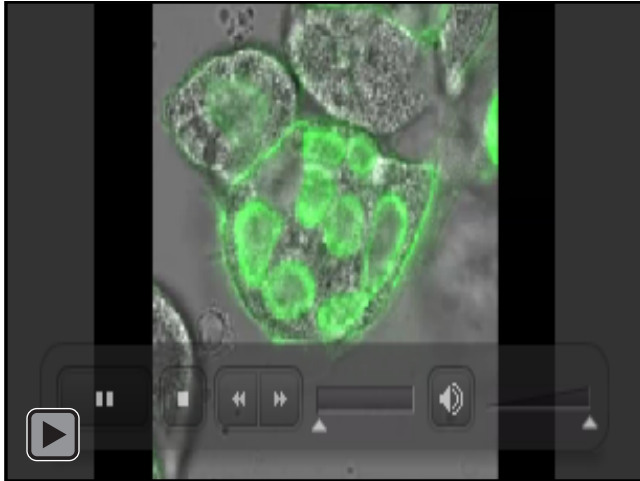
Movie 2. Real time observation of AV enlargement during histamine stimulation in YFP-ezrin transfected parietal cell. Histamine (100 μM) was added at the start of the experiment. Images were recorded every minute for 30 min. Cell in this movie is also shown in Fig. 3B.

Movie 3. Real time observation of ML-7-induced shrinkage of AV in GFP-PLC₁δ-PH transfected parietal cell. ML-7 (10 μM) was added at the start of the experiment. Images were recorded every minute for 30 min. Cell in this movie is also shown in Fig. 4A.

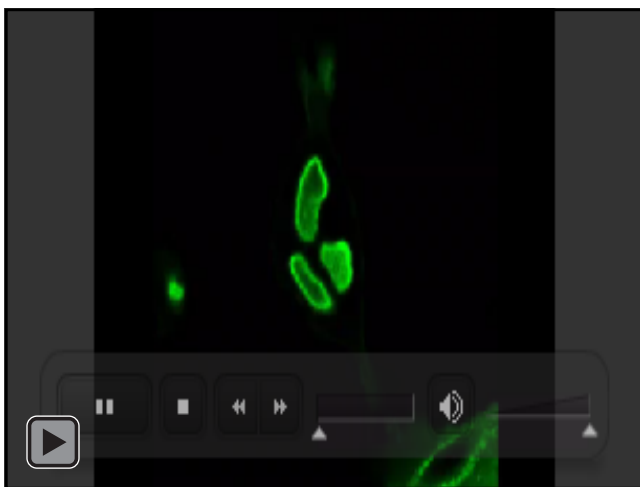
Movie 4. Real time observation of AV shrinkage during ML-7 treatment in YFP-ezrin transfected parietal cell. ML-7 (10 μM) was added to start imaging. Images were recorded every min for 30 min. Cell in this movie is also shown in Fig. 4B.

Movie 5. Real time observation of jasplakinolide-induced blebbing of AV in GFP-PLC₁δ-PH-transfected parietal cell. Jasplakinolide (3 μM) was added to start the experiment. Images were recorded every minute for 25 min. Cell in this movie is also shown in Fig. 5A.

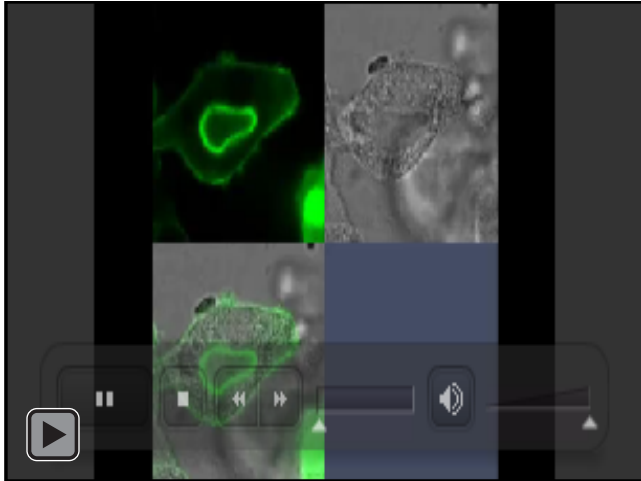
Movie 6. Real time observation of jasplakinolide-induced blebbing of AV in YFP-ezrin transfected parietal cell. Jasplakinolide (3 μ M) was added to start the experiment. Images were recorded every minute for 25 min. Cell in this movie is also shown in Fig. 5B.



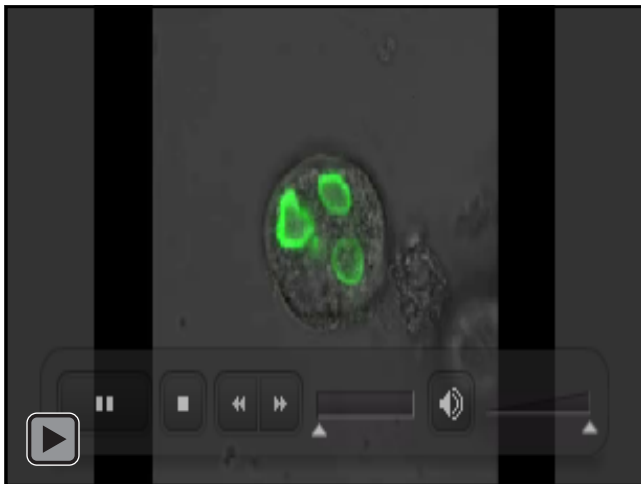
Movie 1



Movie 2



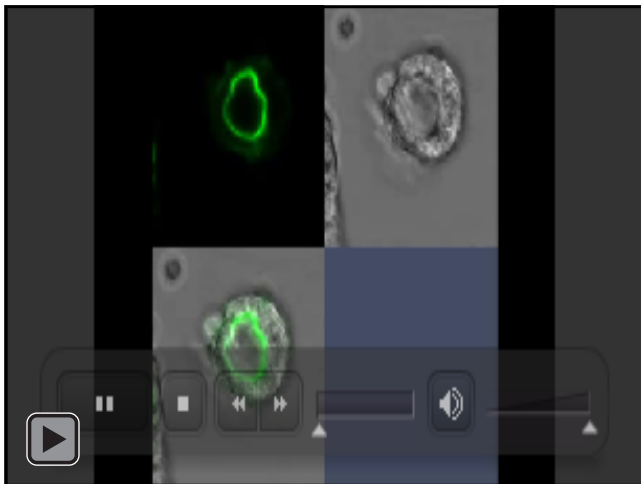
Movie 3



Movie 4



Movie 5



Movie 6