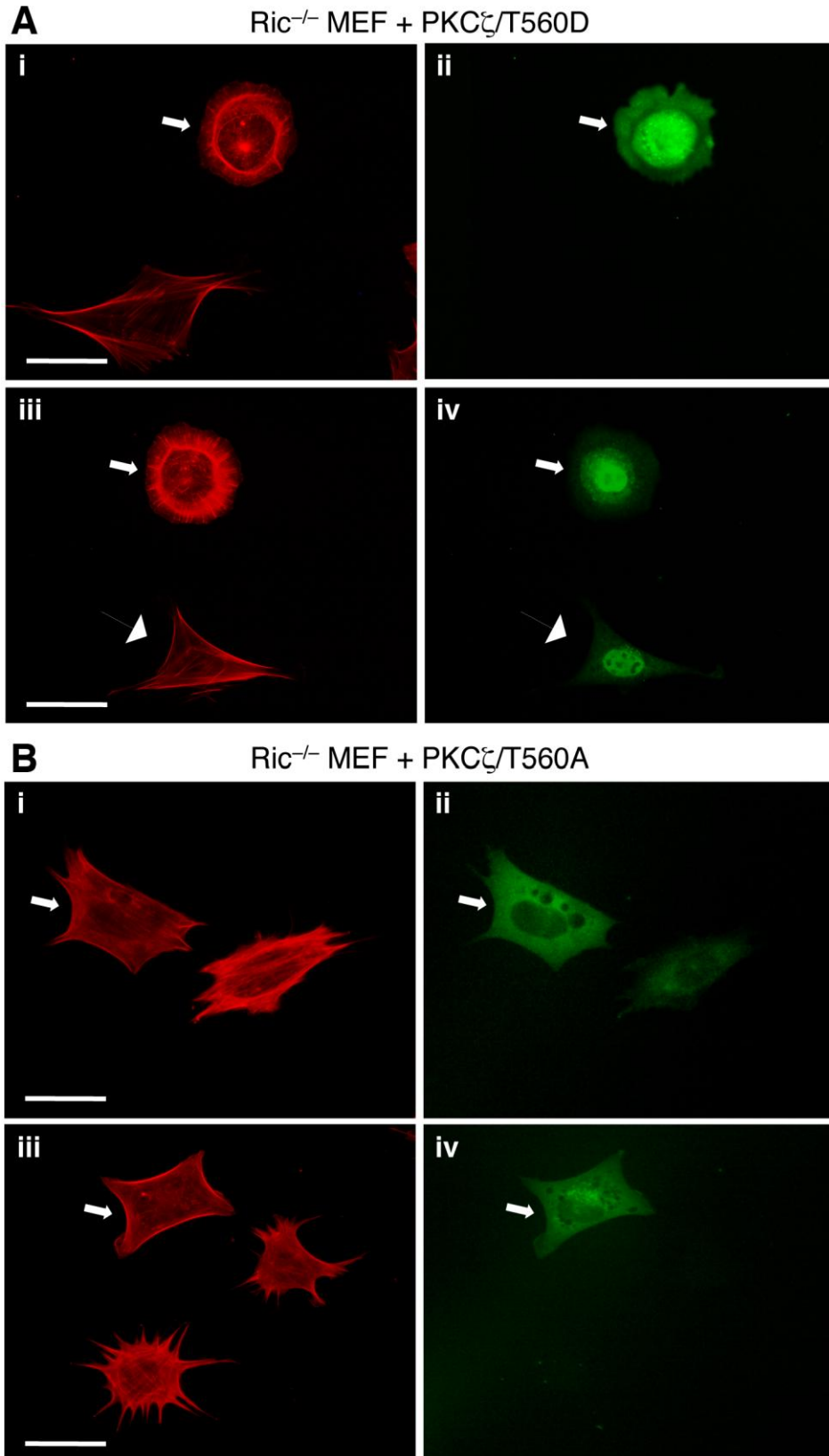


Figure S3. The TM phosphorylation of PKC ζ is required for regulating actin cytoskeleton organization in Rictor null MEF cells. Ric^{-/-} MEF cells transfected with EGFP-PKC ζ /T560D (A) or EGFP-PKC ζ /T560A (B) were seeded on fibronectin-coated coverslips and treated with EGF. Actin was visualized using Alexa594-phalloidin (panels i and iii), whereas the transfected cells were visualized by EGFP (panels ii and iv). Arrows mark the transfected cells. Note that one cell transfected with EGFP-PKC ζ /T560D showed no lamellipodia formation (marked by an arrow head). Scale bar = 50 μ m.



Supplemental Figure S3