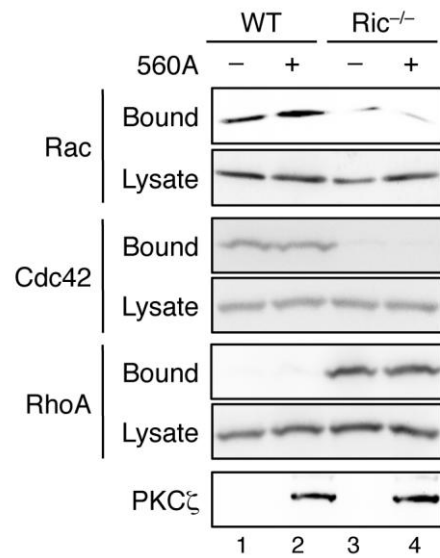


**Figure S4. The TM phosphorylation of PKC $\zeta$  is required for regulating Rho family small GTPases.** WT and Ric<sup>-/-</sup> MEF cells transfected with vector or Flag-PKC $\zeta$ /T560A were subjected to Rac1/Cdc42 and RhoA activity assays. Overexpression of PKC $\zeta$ /T560A had no effect on rescuing the activation of Rac1, Cdc42, and RhoA in Ric<sup>-/-</sup> MEF cells.



Supplemental Figure S4