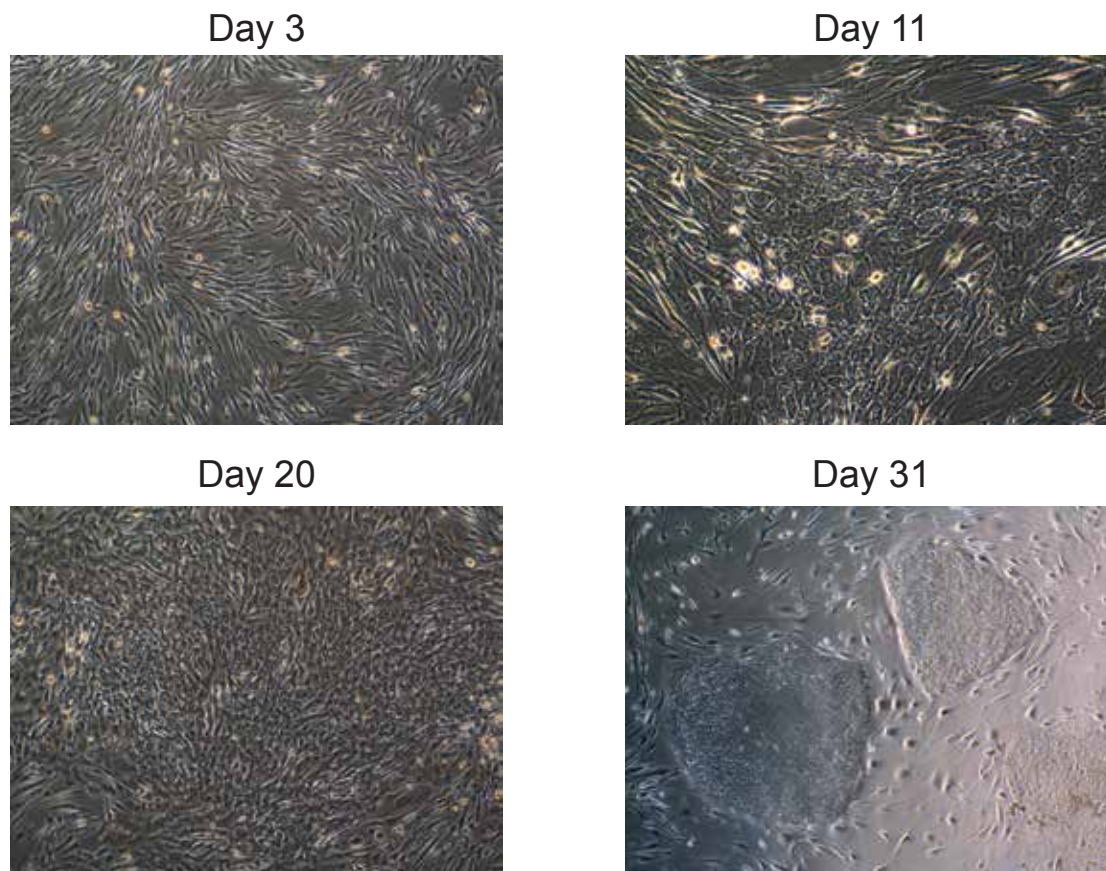
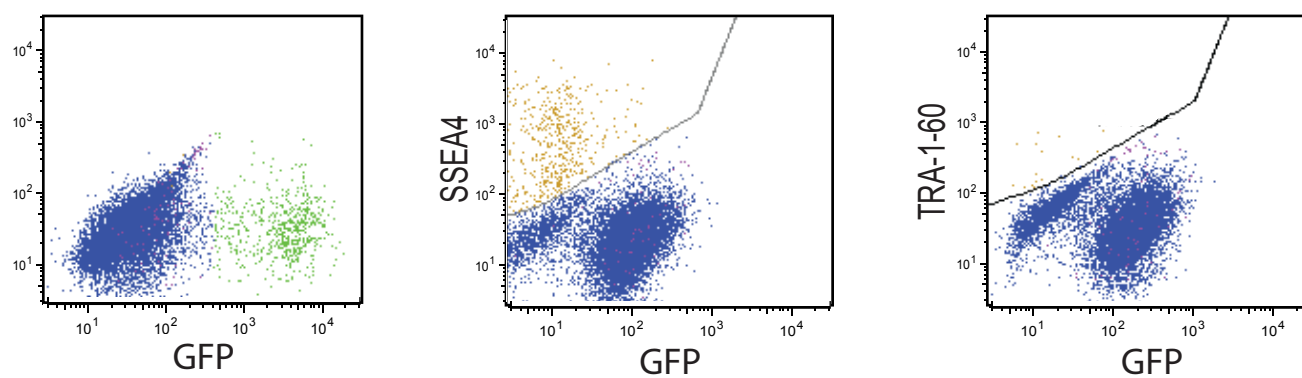


Figure S1

A



B



**Figure S1:** Overview of Experimental Design

(A) Representative images of Human MRC-5 cells undergoing reprogramming at indicated time points post-infection with OSKM virus. (B) Representative FACS plots showing the gating scheme used for the isolation of GFP<sup>+</sup>, SSEA4<sup>+</sup> and TRA-1-60<sup>+</sup> cells.