

# Figure 1B

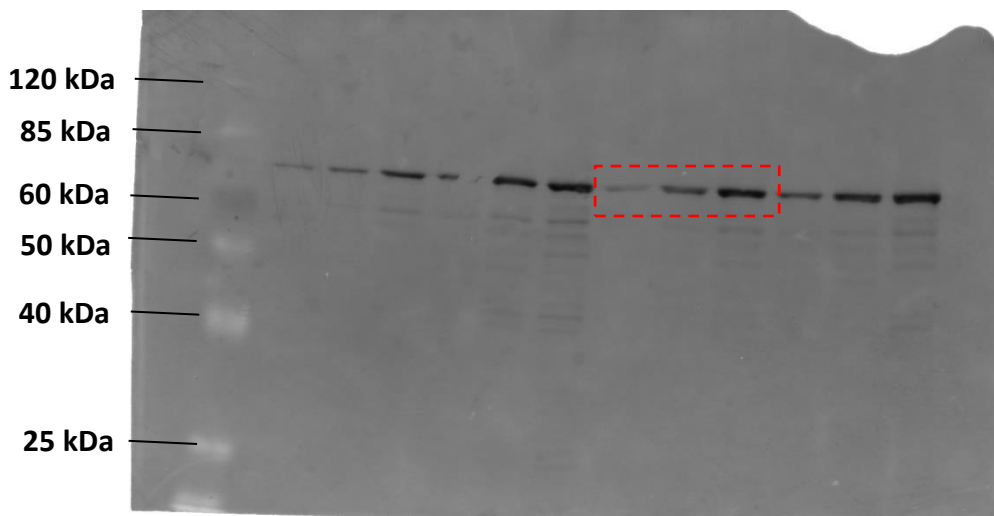
Gel: 10% SDS-PAGE gel

MW Marker: BenchMark pre-stained (Invitrogen 10748-010)

1<sup>st</sup> Antibody: rabbit anti-firefly luciferase, 1:1,000 (Sigma Aldrich L0159)

2<sup>nd</sup> Antibody: goat anti-rabbit IgG, FITC labelled, 1:1,000 (Sigma Aldrich F9887)

Image acquisition: Fuji FLA-5100 fluorescence scanner, "FITC" Laser/Filter settings



Lane order:

minCFLuc, staCFLuc, maxCFLuc (Replicate 1, 2.5  $\mu$ l load)

minCFLuc, stacFLuc, maxCFLuc (Replicate 1, 10  $\mu$ l load)

minCFLuc, stacFLuc, maxCFLuc (Replicate 2, 10  $\mu$ l load)

minCFLuc, stacFLuc, maxCFLuc (Replicate 3, 10  $\mu$ l load)

Approximate area used in figure 1B is outlined

# Figure 1C

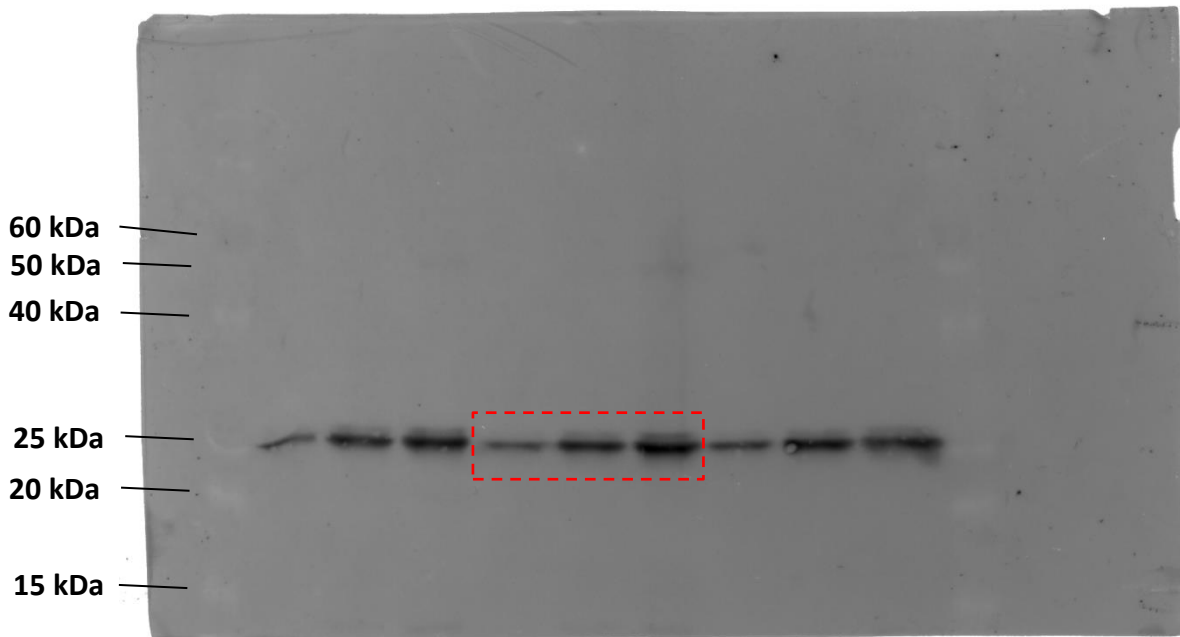
Gel: 12.5% SDS-PAGE gel

MW Marker: BenchMark pre-stained (Invitrogen 10748-010)

1<sup>st</sup> Antibody: rabbit anti-HA, 1:1,000 (Sigma Aldrich H6908)

2<sup>nd</sup> Antibody: goat anti-rabbit IgG, FITC labelled 1:1,000 (Sigma Aldrich F9887)

Image acquisition: Fuji FLA-5100 fluorescence scanner, "FITC" Laser/Filter settings



Lane order:

Marker

minHIS3, staHIS3, maxHIS3 (Replicate 1, 10  $\mu$ l load)

minHIS3, staHIS3, maxHIS3 (Replicate 2, 10  $\mu$ l load)

minHIS3, staHIS3, maxHIS3 (Replicate 3, 10  $\mu$ l load)

Approximate area used in figure 1C is outlined

# Figure 1D

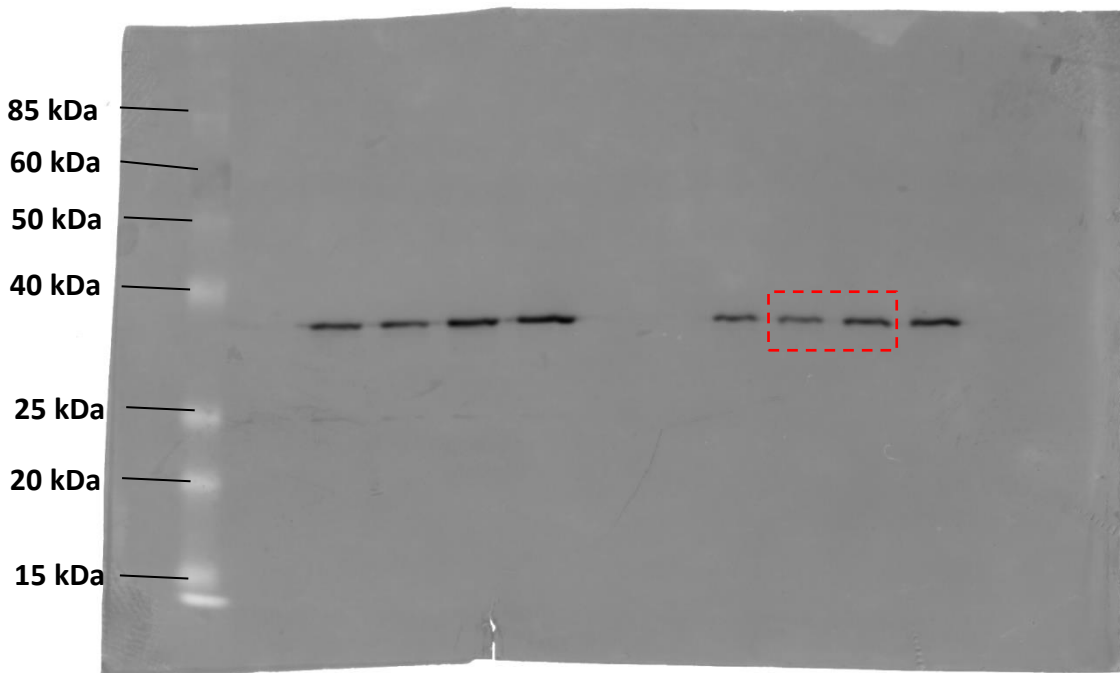
Gel: 12.5% SDS-PAGE gel

MW Marker: BenchMark pre-stained (Invitrogen 10748-010)

1<sup>st</sup> Antibody: rabbit anti-Renilla luciferase 1:1,000 (MBL PM047)

2<sup>nd</sup> Antibody: goat anti-rabbit IgG, FITC labelled 1:1,000 (Sigma Aldrich F9887)

Image acquisition: Fuji FLA-5100 fluorescence scanner, "FITC" Laser/Filter settings



Lane order:

Marker, empty

minRLuc (Rep 1, 10 µl), minRLuc (Rep2, 10 µl)

staRLuc (Rep 1, 10 µl), staRLuc(Rep 2, 10 µl)

empty, empty

minRLuc (Rep 1, 5 µl), minRLuc (Rep2, 5 µl)

staRLuc (Rep 1, 5 µl), staRLuc (Rep 2, 5 µl)

Approximate area used in figure 1D is outlined

# Figure 1E

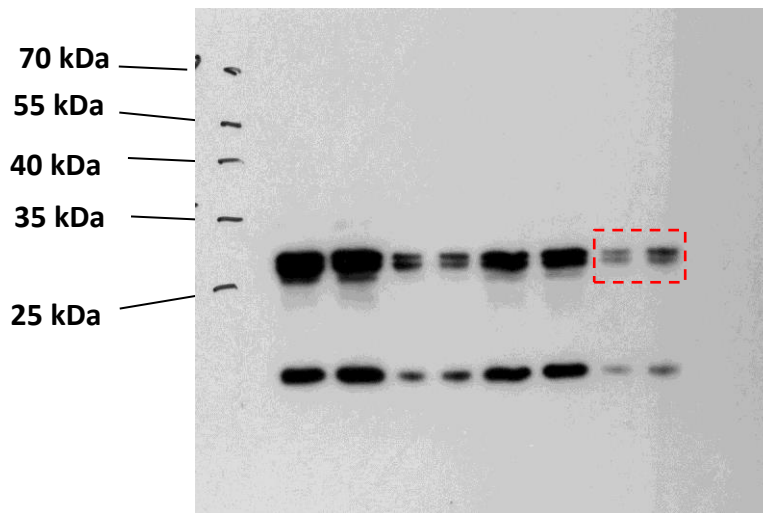
Gel: 12.5% SDS-PAGE gel

MW Marker: PAGERuler pre-stained (Thermo Scientific 26616)

1<sup>st</sup> Antibody: rabbit anti-RFP 1:1,000 (MBL PM005)

2<sup>nd</sup> Antibody: goat anti-rabbit IgG, HRP labelled 1:10,000 (Sigma Aldrich A6154)

Image acquisition: Incubation with HRP substrate and exposure to Film (10 second)



Lane order:

Marker

mCherry v3, mCherry v4 – 10 $\mu$ l	}	Replicate 1
mCherry v3, mCherry v4 – 2 $\mu$ l		
mCherry v3, mCherry v4 – 10 $\mu$ l	}	Replicate 2
mCherry v3, mCherry v4 – 2 $\mu$ l		

Approximate area used in figure 1E is outlined